



December 2016

A Chapter of The American Association of Woodturners (www.woodturner.org)

Volume 9, Issue 12

UPCOMING MEETINGS & EVENTS

December 14, 2016 — 6pm Annual Holiday Party *Club Awards, Super Challenge & Instant Gallery*

Held @ Belgium Cold Springs
Station 1 Community Room, 7920
River Rd, Baldwinsville

December 10 & 11, 2016 Ronald McDonald House Ornament Sale

Held @ St. Rose of Lima Church,
409 S. Main St., North Syracuse
Details on page 14

January 10, 2017 — 6:15pm Monthly Meeting — Turning a Bowl with Charlie LaPrease Challenge — Square Bowl

Held @ Belgium Cold Springs
Station 1 Community Room, 7920
River Rd, Baldwinsville

January 21, 2017 — 9am Monthly Workshop — Turning a Bowl

Held @ Eight Acres Event Center,
Baldwinsville
Details Next Month

INSIDE THIS ISSUE:

- ◆ Mr. Renrut — page 15
- ◆ November's Demonstration — pages 7-8
- ◆ Wood Education — Sapele — page 6
- ◆ Twenty Ways to NOT Turn a Bowl — page 16
- ◆ 2017 Demonstration Schedule — page 22

OUR DECEMBER MEETING

Members and guests of the Central New York Woodturners will gather on **Wednesday**, December 14th anytime after 5:30pm for our annual Holiday Party. The focus of this meeting will be talking with your fellow wood-turners and their family while partaking in a pot luck meal. The day is one day later than what our normal meeting date would be to allow us to shift the event to a warmer environment—the Community Room at Station 1 of the Belgium Cold Springs Fire Department at 7920 River Road, Baldwinsville [*directions on page 2*].

Plan to bring any dish you'd like for the table—a main, a side, an appetizer, or a desert. The club provides drinks & the table settings. The plan is to start eating **by 6:30pm**, but if you can't arrive until a bit later, that's fine.

In addition to your dish, bring your family members to this event. Also, since many of us



turn items which are given as gifts during the holidays, bring those with you for our **Instant Gallery** tables. Don't forget to bring your **Super Challenge** piece for our first ever competition!

Note that there will be no videos rented, no wood or sandpaper sold, and there will be no official *Show & Tell* other than the Instant Gallery. We will have cards at the Gallery on which you can place pertinent information about your pieces but feel free to bring pre-written summaries for attendees to read.

This should be a fun evening! Plan to attend now!

THE SUPER CHALLENGE!

Our first ever *Super Challenge* is a chance for members to create **one cohesive piece** that incorporates as many 2016 monthly challenge topics as possible into the piece. Each participant will fill out a form that shows which of the monthly topics listed right are included. The form will be placed with the piece so voters can see how many topics the participant included. All attendees will have an opportunity to vote for the one piece they feel best interprets and incorporates each month's challenge into the Super Challenge piece while exhibiting quality woodturning.

As this is our *Super Challenge*, the prizes are bigger and there are three possible! The two top prizes (\$100 gift card for 1st and \$75 gift card for 2nd) will be based a combination of points accumulated from the number of monthly challenges incorporated in the piece and a percentage of the total votes received from the audience vote. There will also be a \$50 gift card participation prize.

2016 Monthly Topics for Super Challenge

January—Finials

February—Lidded Box

March—Wave Piece

April—The Ogee Shape

May—Glues & Finishes

June—Staving & Segmentation

July—Thin Turning

August—Piercing

Sept—Banksia Pods/Nuts

October—Spoon

November—Square Bowls

NOTES FROM OUR PRESIDENT

I hope everyone had a nice Thanksgiving holiday and survived all of the *Black Friday* shopping activities. With Thanksgiving behind us, it's time to look forward to Christmas. I am sure your shop is like mine — buzzing making presents for family and friends. I ran thru the complete line of kitchen utensils over the last couple of years so this year it's time to add cheese and cracker trays.

Let's take a moment to reflect on what I would consider a successful year for the Central New York Woodturners club. Our membership grew to 111, our best ever. We are seeing good attendance at both meetings and workshops. We completed the *Woods of the World* project in time for it to travel to the Symposium in Atlanta. The WOW project will continue to grow and be an asset for the club to use at the Fair and other places.

A nice contingent of members attended the AAW Symposium in Atlanta, GA this past year. Thanks to the Love's, we were able to take the WOW project with us for its grand unveiling in the Instant Gallery. We heard many great comments about the WOW project. We also found out that our club's newsletter was awarded 3rd place in the AAW contest. Big round of applause to Barbara for all her hard work of this great informational tool for our club.

Thanks to the time and effort of Chad and Barbara, we were able to reconstruct our website so it is more user friendly and the content continues to grow. They've upload almost 3 years worth of the *Turning Times* newsletters as well as recaps of as many years of monthly demonstrations. If you have not checked it out in a while, I guarantee you are missing a gem.

It may sound like a broken record, but the State Fair was a huge success again this year!

We worked very well with the new museum staff, helping to move some displays around which ultimately gave us a better location. We do have a few refinements to make before the 2017 edition but I am looking forward to another successful year. Our raffle items sparked a great deal of conversation as did having the World of Woods project displayed.

Our generous members again willingly supported a variety of charitable projects this year! They included — *Pens for Troops*, tops for the Witter Museum, *Beads of Courage*, and ornaments for charity to support the joint effort we have with the Sawdust & Woodchips Woodworking Association. As a group, we managed to turn 185 pens, 770 tops, 25 boxes for Beads of Courage, and a plethora of ornaments and other items that will be sold to support our local Ronald McDonald House

We have a fantastic line up of demonstrators for 2017. The Demonstration Committee worked really hard to make sure we have a great variety of demonstrations for next year, with something of interest for every member. *Totally Turning* will be here before we know it which marks the start of spring. The AAW Symposium this year is in Kansas City, a distance, but I can assure you it is well worth the time.

I would like to close by saying **Thank You** to everyone that helped make this past year successful. Whether you served on the Board of Directors, helped at the New York State Fair, turned pens for troops or just showed up and participated in the meetings you are making a difference. I wish everyone a happy holiday season and look forward to our holiday gathering. As always, stay sharp and keep turning — safely.

Doug North



“Our generous members again willingly supported a variety of charitable projects this year!”



DIRECTIONS TO THE BELGIUM COLD SPRINGS FIRE DEPT — STATION ONE COMMUNITY ROOM

Everyone comes from different directions. For your GPS, the street address is: 7920 River Road, Baldwinsville. New York 13027

General Instructions: Station 1 is north of John Glenn Blvd., east of Route 370 and south of Route 31 at the intersection of River Road, Hicks Road and Patchett Road. Everyone comes a different direction, whether it is thru Liverpool on Rt 370 or via Rt 690 (get off at John Glenn Blvd.).

DO NOT BLOCK STATION DOORS WHEN PARKING!

From John Glenn Blvd., take Route 370/Cold Springs Road north (there is a traffic light at the corner of John Glenn & Rt 370). Take your first right at Cold Springs (past the Elks) onto River Road. Drive 2 miles and firehouse will be on right. Park on the north side in the lot away from

the overhead doors. If you miss the right onto River Road, drive 2.2 miles north to Hicks Road. Take Hicks to the 5 way intersection, turn right onto River Road and then left into the firehouse parking lot.

From Fayetteville, Manlius, etc. Take Rt. 481 north to the Route 31 exit. Take a left onto Rt. 31. Drive approximately 3½ miles to River Road (it will be the 9th traffic light). Turn left on River Road and head south 2 miles to the 5-way intersection. Make a slight left to stay on River Road (after stopping for the 5 way stop sign). The fire station is just past this intersection on the left off River Road.

NOVEMBER 2016 MONTHLY CHALLENGE

The club holds a *Monthly Challenge* as part of its regular meeting. The Challenge is a way for all club members to have fun honing their turning skills using information and techniques learned during each monthly meeting's demonstration. Members are encouraged to bring an original piece they created after the meeting that fits the basic requirements of the Monthly Challenge and within the constraints

announced by the President. Generally, the Challenge for the next month is based on the previous month's meeting topic. For November, the Challenge was to create a spoon based on *Mike Malecki's* October demonstration. We had 17 people participate in the Challenge — one new to the Challenge. The People's Choice award was *Mike Gridley*. The Participant award was given to *Phyllis Radford*.

People's Choice Award

Mike Gridley
Colorwood Spoon & Spatula
Walnut Spoon Caddy
Rub-on Poly Finish



Mel Taber
Maple Burl Spoon (*Top & Bottom*)
Three Myrtle Spoons
Finished with Odie's Oil & Buffed



Bob Ireland
Cherry Laddle
Finished with Hemp Oil



Jerry Holbrook
Buckthorn & Cherry Laddle
Finished with CA Glue



Robert Love
Oak Big Spoon with Wax Finish



Greg Potter
Tablespoon
Honey Locust
Poly Finish



Heather Muckley
Maple & Redheart Coffee Scoop
Poly Finish



Bob Johnston
Koa Spoons
Friction Finish

They all started from one demonstration on making a spoon! And, look what we got in the Challenge!

Participant Award

Phyllis Radford
1/4 Cup Spoon
Cherry with Maple



NOVEMBER 2016 MONTHLY CHALLENGE



Mike Malecki
Maple Spoon
Salad Bowl Finish



Charlie LaPrease
Maple Spoon
It's a Secret!



Ted Kleege
Soft Maple Spoon
Odie's Oil Finish



Erik Untiedt
Walnut Spoon
Salad Bowl Finish



Ed Siegel
Canary Spoon
Mineral Oil



Dave Grant
Cherry Spoon
Walnut Oil



Larry Prunotto
Maple Scoop & Jig



Larry Prunotto
Cherry Spoons



Matt Revenaugh
Cherry Spoon
Mineral Oil

CHALLENGE PARTICIPANTS FOR 2016

Mark Anastas (2)	Rod Castle (3)	Chad Dawson (8)	Dick Gorman (1)
Dave Grant (11)	Mike Gridley (6)	Dick Hoblitzell (2)	Jerry Holbrook (9)
Bob Ireland (11)	Bob Johnston (2)	James Kent (5)	Ted Kleege (2)
Charlie LaPrease (11)	Tom Lawlor (2)	Robert Love (10)	Don Lum (1)
Mike Malecki (11)	Bruce Meissner (1)	Gary Morison (1)	Heather Muckley (11)
Bob Norton (1)	Dick Parker (1)	Greg Potter (8)	Larry Prunotto (7)
Phyllis Radford (5)	Ed Rantanen (7)	Barbara Raymond-LaPrease (6)	Matt Revenaugh (3)
Ed Siegel (11)	Bob Silberman (1)	Jerry Sweeney (2)	Mel Taber (8)
Erik Untiedt (1)	Terry Vermilyea (5)	Jerry Williams (1)	Jim Yonkers (6)

REWARDS: Based on voting by attendees, a People's Choice award is selected. A Participant award winner is selected from the remaining entries. Both receive special awards. All participants vie for year-end awards based on their year-long participation. Each month, the newsletter is updated to include the Challenge participants and the number of times they shared a piece. At the end of the year, a random drawing is held that includes a ticket for each participant, for each month they entered a Monthly Challenge.

NOTE: All Challenge pieces must be constructed as a result of the demo at the meeting; In other words, created from the date of the meeting to the date of the next meeting.

NOVEMBER 2016 SHOW & TELL

Members create a wide variety of projects. Sharing those projects with others is a wonderful way to show members what you've completed lately as well as gain valuable feedback on your turning. We love seeing what you create. Remember that long explanations impact other participants' ability to talk about their projects.

When you bring something in for *Show & Tell*, please enter as much information as possible on the sign-in sheet so there is an accurate record of your project in the newsletter. If you want, bring a card with the information and leave it with the sign-in sheet. Please put your name on a card and place it with your entries to make it easier for the photographer.



Curly Maple Platter by **Mike Malecki** with seven inlays: Brass, Aluminum, Turquoise, Padauk, Yellowheart, Peruvian Walnut, & Corian Dust Finish of Polyurethane



Heather Muckley
1st Pen—Walnut with CA Finish



Jerry Holbrook
Cherry & Black Walnut Bowl
Salad Bowl Finish



Diana Anastas
1st Pen—Maple with Hut Finish



Tony Maio
Mahogany Gavel with Wipe on Poly



Barbara Raymond-LaPrease
Box Elder Burl Infused & Dyed Pink
Gift To Doctor to Celebrate 5 Years Cancer Free



Mel Taber
120 Tops of Various Woods & Finishes
Donated for 2017 Fair Sales



Bob Johnston
Koa Pen & Bowl with Friction Finish



Greg Potter
Black Palm Ice Cream Scoop with Poly Finish



Bottle Stoppers by **Larry Prunotto** of Olive, Walnut, Spalted Maple, Rosewood, & Spectraply Friction Polish & Buff Finish

If you are developing new techniques for a turning, why not put together your technique into a meeting demo or even an article for the newsletter! You will learn even more!

NOVEMBER 2016 SHOW & TELL



Dave Grant
Weed Pot with Friction Polish Finish
For Donation to Ornament Sale



Robert Love
Cherry Drawer Pulls No Finish

Ornaments
For Donation to Ornament Sale

Don't Forget Your Pieces for Our Instant Gallery at the December Meeting!

TURN FOR TROOPS—2016

The *Turn for Troops* National *Turn-a-Thon* sponsored by Woodcraft is in its 13th year. Thru this event volunteers turn pens which are then sent to military personnel serving overseas or those in rehabilitation centers. Most of the pens are produced at Woodcraft stores, but absent a local store, they supply pen kits and wood to any AAW club that puts in a request. The Central New York Woodturners are in their third year of participating in this great effort. In 2014 we had 23 members turn 170 pens while in 2015 14 members turned 150 pens. This year, 23 members turned 185 pens. We had many more re-

quests for kits, but Woodcraft could not accommodate us this year. Larry Prunotto, project chair thanks everyone who turned and/or donated pens. We'll get a group photo at the December meeting; but, for now, here's a photo of our donation!



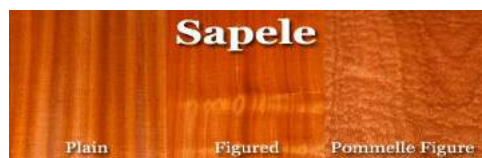
WOOD EDUCATION — SAPELE

Sapele *Entandrophragma cylindricum* is an African wood whose name is often times spelled as Sapelli and pronounced sa-PEE-lee. Other names for Sapele are Aboudikroe, Penkwa, Assi, and Lifari — among others. Sapele is often considered the cream of the African mahogany market because its grain and pore structure is tighter than genuine mahogany. In fact, it is often marketed as African mahogany and a substitute for genuine mahogany..

Sapele is a large tree native to tropical Africa that has a widespread growth range across the continent. It is common for the trunk to exceed 6 ft in diameter. Generally, the tree has a very straight trunk with little to no branching below 80 feet.

This yields very straight grained wide and long lumber in great abundance per log.

The wood is generally ranges in color from dark red brown or purplish brown, very similar to mahogany. The sapwood is whitish or pale yellow. The texture is rather fine and grain interlocked. Sapele is known for a wide variety of other figured patterns, such as pommele, quilted, mottled, wavy, beeswing, and fiddleback. When you work with it, Sapele has a distinct, cedar-like scent.



**OUR NOVEMBER DEMONSTRATION
HIP TO BE SQUARE WITH ROBERT LOVE**

The square bowl was introduced to attendees at the November 8th meeting of the Central New York Woodturners. **Robert Love** was our demonstrator for the evening. Robert began his talk by discussing and showing the four common variations – the uplifting bowl, the slump style, the suspended style, and the heavy square bowl (see photos right).

With reference to wood selection, Robert suggested dry, tight grain domestic species such as maple, white oak, walnut, or apple or use an exotic like olive, padauk, etc. Any of the stabilized blanks you can purchase will work also. As is common with any project, some woods are more difficult to work with when turning square. Also, because you are alternately turning long grain and end grain, you may encounter tear out on the long grain edge. You may want to glue a sacrificial thin piece of wood – like a paint stirrer – on the long grain edge using a paper joint to counteract the tear out. If you don't, keep your tools extremely sharp and using shearing angle cuts when turning the edges.



Moving on, Robert talked about preparing the wood for turning, an important step in creating the bowl. He noted that you should start with a square piece of wood in order to obtain perfect edges. Then, find the center of the block and mark it with an awl to identify clearly its location. Once the center mark is located, mount your face plate onto the wood. It is important to center your wood so that each point of the wood is centered and clearly visible. It may not seem important but when you turn the piece, you will obtain a very different look if you don't start on center.

Robert showed a couple centering jigs that help you get the face plate mounting perfect. One was a jig he purchased from Don Pencil which he no longer sells. The other was a unit he



made (see photo). If you don't want to use a face plate, you can also use a steb center with your chuck and tail stock to hold the piece while you create a tenon for your chuck or even use a worm screw.

Everyone asks about speed. Robert noted that this is one project where high speed makes for easier cutting. As usual, work at a speed with which you are comfortable. Also, make sure to test your tool rest position when the lathe is not turned on, and then again with the lathe turned at a slow speed with you standing on the safe side – away – from where the piece is turning.

You are finally ready to apply your tool to the wood. This is one instance where you need to apply your ABCs of turning – Anchor the tool, rub the Bevel, and Cut. In this instance, anchor the tool, rub the bevel,



pull back until you are not rubbing then advance in and make light cuts with your bowl gouge. Slowly, work light cuts along the edge and shape

the bottom of your bowl. While shaping, be sure to be extra careful when nearing the edge of the bowl. As you are shaping the bottom you will also be creating a tenon to match your chuck, whether it be straight or dovetail. Before removing from the lathe, mark the center on the bottom as it helps when re-centering to finish the bottom.

Also, before moving on, sand the bottom. You can perform some light power sanding on the

lathe with the lathe on BUT it's dangerous, it can cause the leading edges to be rounded over, and did I say it's dangerous! So, while we all hate sanding, your other option is to learn to get clean cuts. If you are going to sand, leave the piece mounted on the lathe, lock your head stock to prevent the piece from turning when sanding. Use an electric drill mounted sanding pad with a soft interference pad.

Ready to move on? Making sure your center is still marked, remove the piece from the



Square Bowl Styles



Uplifting Style Bowl



Slump Style Bowl



Suspended Style Bowl



Heavy Style Bowl



3 Sided Style Bowl



**Our November Demonstrator
Robert Love**

**OUR NOVEMBER DEMONSTRATION
HIP TO BE SQUARE WITH ROBERT LOVE**

face plate and mount it in the chuck. Work the back edges a little at a time. Take time to stop the lathe periodically and check where you are in your process. Try to maintain



Once you've finished cutting, sand as needed to clean up tool marks and soften the edges. Then reverse mount the piece and shape your tenon into something pleasant or remove it altogether. Sand as needed and finish.



*When reverse chucking, use a mouse pad or other foam material to protect your piece. Or consider purchasing **Rubber Chuckies** @ rubberchucky.com. They have various cone sets that you can use!*



an even thickness along the square edge and remember that the edge is sharp, like a saw blade. A

There are several videos on YouTube about making square bowls along with a couple of articles elsewhere. Each has its merits and can be useful. Just remember, some people post videos on the internet that involve pretty scary actions. Always think twice about what you see and whether it is wise to use the techniques presented. One excellent source to videos that meet minimum safety standards is the American Association of Woodturners (AAW) **Video Source**. Available to AAW members, an easy search tool then links you to videos in the broad topics. This is one great resource available to all AAW members!

thought on cutting ... as John Jordan says, *let the wood come to the tool*. Also, use a push cut into the center because if you use a draw cut outward, you could easily hit

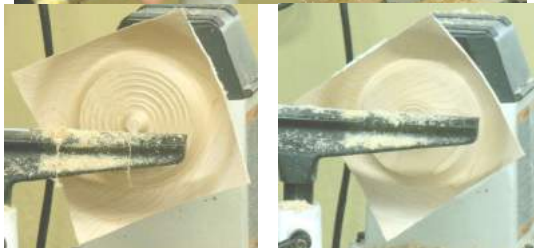


Thanks Robert for a well thought out, organized, and comprehensive presentation!



the outer edge and whoops!

Written by: *Barbara Raymond-LaPrease*
Photos by: *Doug North*



Use the AAW Video Source tool to find turning videos that meet minimum safety standards!
Not a member? Use the new 60 day Guest Membership option to explore what they have available!

www.woodturner.org

**OUR NOVEMBER WORKSHOP
SQUARE BOWLS WITH ROBERT LOVE**

The November Saturday workshop was held at Eight Acres Event Center on the 12th. We had six members who attended the workshop and enough mentors to help everyone. Half of the attendees worked on square bowls while

the other half received excellent instruction on skills. Each walked away with new knowledge and appreciation for turning. It really helps to have additional hands available at the workshops. Remember, mentors do not pay.



*The sacrificial wood was flying so Chad improvised with a second face shield.
Below, Charlie shows Chad another option!*



Mentors really help insure that workshops run smoothly and safely!



*Greg & Mark Help Bruce
It's great when there are multiple mentors!*

OUR NOVEMBER WORKSHOP
SKILLS INSTRUCTION

These are the photos of our mentors helping new members with some skills instruction. For Kim, it was helping her work up a icicle type turning with help from Greg and Ed. For Amy and Scott, it was instruction from the start. Larry handled the early instruction, then Charlie

stepped in, and then Ed. Scott moved over to a different lathe with Chad.

If you are a new member, skills instruction is always available at our Saturday workshops. Just sign-up at a meeting so we can have mentors on hand!



Serious Training Underway !

Sign-up to receive skills training at any Saturday Workshop!



*Scott's Results (above)
 Kim's Icicle-Like Turning (below)*



OUR NOVEMBER MEETING IN PHOTOS



TURN & PASS 2016-17

The *Turn & Pass* project is our club activity that produces items that are then raffled during the 12 days of the New York State Fair. Members are asked to step up and create a piece either as a single person or a collaboration. The final piece is then donated and used for the raffle.

The Board of Directors wants to help offset the cost of producing the items so it has a collection of wood for participants to use for their projects. You may select a piece of wood from the Club's wood sale for FREE to then use in creating a *Turn & Pass* entry and/or use some of your own to make your project.

The wood used can include multiple species, sizes, and shapes. The finished piece does not need to be built from one single piece or species of wood. The wood can be cut, shaped, and used in any type of woodturning technique from segmented to laminations to inlays, to hollowing, to whatever.

The objective of the effort is to produce turned pieces that are appealing to the audience at the NYS Fair who purchase raffle tickets. Coincidentally, the pieces produced should be of high quality,

exhibit good woodturning techniques, and finished well. Items you could make include those in the table below but unique ideas are always welcomed and encouraged.

Our goal is to produce 12 high quality pieces—hopefully, each with a WOW factor. This raffle is the largest single source of income for the club each year. We use the money raised by the raffle to pay for demonstrations, club workshops, tools, and all that we do to educate and engage people in the art and craft of woodturning.



**Turn & Pass
Sept 2016 Submission**

Lidded Box by Mel Taber of Red Mallee Burl (base), Big Leaf Maple Burl (top) with Blackwood handle. Finished with Odie's Oil & Buffed

Lidded Boxes	Rolling Pins	Bowls or Platters
A Group of Toys	Pepper Mills	Goblets w/Captive Rings
Pen & Pencil Set in a Display Box	Honey Pot with Honey Dipper	Sets of Ornaments on a Nice Stand
Lamp Bases	Jewelry Sets	Sets of Bottle Stoppers
Vases, Vessels, or Hollow Forms		Sculpted Forms

CURRENT PARTICIPANTS IN THE 2016-2017 TURN & PASS PROJECT

Month	Turner	Wood Species	Donated Piece
Sept 2016	Mel Taber	Red Mallee Burl	Lidded Box (Above)
Oct 2016	Larry Prunotto	Bradford Pear	Bowl (Right)
Nov 2016	Ed Siegel	TBD	TBD
Dec 2016	Terry Vermilyea	TBD	TBD
Jan 2017			
Feb 2017	Charlie & Barb LaPrease	Curly Maple	TBD
Mar 2017	Mike Malecki	Cherry	Globe
Apr 2017	Bob Randall	Maple	TBD
May 2017	Rod Castle	TBD	Lighthouse Peppermill
Jun 2017	Mike Gridley	Norfolk Island Pine	Bowl
Jul 2017	Dick Hoblitzell	Chery & Maple	Rolling Pins
Aug 2017	Jerry Holbrook	Cherry	TBD



**Turn & Pass
Oct 2016 Submission**

Bradford Pear bowl by **Larry Prunotto** with a Friction Polish Finish and then Beall Buffed

What can you create? There are still opportunities to volunteer!

NOVEMBER 2016 CNY WOODTURNERS MEETING

The November 8th meeting of the CNY Woodturners was opened by President Doug North at 6:20pm in the 4H/Youth Building at the New York State Fairgrounds. With approx. 65 people in attendance we received two new members: **Kenn Pickard** of Syracuse and **Leslie Smith** of Homer. We had seven registered visitors: **Kris Dulmer** of Syracuse, **Frank Kobuszewski** of Warners, **Scott Hafler** of Tully, Amy **LeClair** of Elbridge, **Inez Ponzio** of Syracuse, **Jim Ruddock** of Baldwinsville, and **Kelley Witter** of Mannsville. At the workshop on Saturday, Scott Hafler and Amy LeClair joined. Our members now stands at **111!!**

Mark Baumes presented a short treasurers report. As usual, things look great and we are not in any financial trouble.

Mel Taber presented a bylaws change to Article III, Membership, Section 5 for approval. It read:

A one day, one time only membership is available for interested persons for the sole purpose of attending a Saturday Workshop or any other Board approved one day event. The dues for this one day membership will be determined by the Executive Committee. If the individual joins the club by the end of the next regularly scheduled meeting of the club, the one time fee for the workshop will be applied to their yearly dues.

The membership in attendance all voted in favor with no opposition.

Mel then presented the slate of officers for 2017. All current officers and at large members were willing to serve again. No other nominations were presented. Mel instructed the Secretary to cast one vote for all.

Larry Prunotto thanked everyone for completing pens for the *Pens for Troops* project. He also received pens beyond our allotment from a few others.

Larry spoke briefly about the member discount program with Hartville Tool—15% unless the item is on sale, on clearance or otherwise.

Mark will be updating the list with everyone's name. He also suggested doing the same with Klingspor and everyone agreed.

Ed Siegel showed the beginnings of an interactive database that will accompany our World of Woods project. The database will be searchable and loaded onto a tablet that he will donate.

Doug read an email from **Beth Pastel** inviting members to contact her so they may acquire wood from her late father's studio.

Doug noted that **Greg Potter** was taking orders for bottle stoppers at the meeting.

Doug announced that the next meeting is on Wednesday, December 14th at Station One of the Belgium Cold Springs Fire Department. Bring a dish to pass. The environment will be warm and more festive as the firehouse will be decorated.

The next Board of Directors meeting will be on Tuesday, December 6th at 6:30pm at the firehouse.

The Finger Lakes Woodturners are hosting **Mark Sillay** for a demo on November 19th and workshop on the 20th. The newsletter has details.

Doug noted that he is still scheduling a drop off for the Beads of Courage boxes he has.

Don't forget to submit your questions for Mr. Renrut to Barb so she can get answers for you. All are welcome to present questions.

Robert Love gave an excellent demonstration about turning square bowls. The write-up is on pages 7-8.

The Challenge for JANUARY will be to present a square bowl
The Super Challenge for DECEMBER is described on page 1

We took a break, voted on the *Challenge*, chatted, and purchased raffle tickets for the tool, etc. After the break, Doug asked Mel and Larry to present their *Turn & Pass* items as shown on page 12.

Doug then led the group thru the *Show & Tell* and *Monthly Challenge* portions of the meeting. For the *Monthly Challenge*, the People's Choice award was won by **Mike Gridley** and the Participant award was won by **Phyllis Radford**. The 50/50 was won by **Greg Potter**.

The meeting ended about 8:45pm and everyone helped clean up the room. The next meeting is Wednesday, December 14th in the Community Room of Station One of the Belgium Cold Springs Fire Department, 7920 River Road, Baldwinsville. It will be our Holiday Party.

Respectfully submitted,

Barbara Raymond-LaPrease, Secretary

Your Super Challenge Entry is the Challenge for December! See page 1 for details!

AAW Explore!

A Better Way to Search the AAW Library of 30 Years of the *American Woodturner Journal* plus other AAW publications!

It's what we asked for! If you are an AAW member, take some time to test it out

You MUST be a member to use. Why not join today!

www.woodturner.org

ORNAMENTS FOR CHILDREN, A COMMUNITY EFFORT

Members of the Central New York Woodturners collaborate with members of the Sawdust & Woodchips Woodworking Association (SWWA) to generate funding for local children charities by selling Christmas ornaments and other assorted items. Started in 2006, so far approximately \$35,000 in profits were distributed into the community via donations to the Golisano Children's Hospital, the Ronald McDonald House, and the children's play area in the infusion room at the Upstate Cancer Center.

We sell at 4-5 events per year, some indoor and some outdoors. Because of donations from everyone as well as time spent by volunteers at the sales, we raised over \$3,000 in 2015. Our next sale is **December 10th & 11th at St. Rose of Lima church in North Syracuse.** We start setup at 3pm on the 10th in the church basement and our entire product is placed onto the

tables. We do not bring racks or our tables, just the product. Mass starts at 4pm so we usually have our first sale about 5pm. The second mass is at 7pm so we usually go to dinner nearby in between sales. Masses on Sunday are at 7:30am, 10am, and 11:30am so we usually start packing up by 1pm. If you have time to help during the two days, it would be greatly appreciated.

Please consider donating some new product – yo-yos, magnets, clocks, seam rippers, letter openers, bottle openers, light pulls, keychains, candlesticks, light bulbs, new nativity scenes/sets and any unique ornaments.

Please consider helping out in some way in 2016, whether it be donating items for sale, helping to setup or pack up, or helping to sell at a venue. See Barbara Raymond-LaPrease to volunteer!



2017 TURNING TO THE FUTURE COMPETITION

Turning to the Future is a competition sponsored by the AAW and is intended to encourage and support students and instructors in reaching for and attaining the highest levels of skill in the use of the lathe. The contest is open to all high school students and those students in post-secondary schools who are in an accredited woodworking program or who are transitioning into a career in woodworking or design. Students must be at least 16 years of age by July 19, 2017. One may enter two pieces as long as they are built between May 2015 and April 2017. All forms of turning are eligible, including

but not limited to traditional, multi-axis, segmented, and rose engine/ornamental turning. Works may be no larger than 20" in diameter and 40" in height. The competition is divided between High School and Post-Secondary levels. The entry categories are **Functional** (i.e. work created for use), **Small Turnings** (i.e. pens, small treen items, toys, small boxes, etc.), and **Open** (i.e. creative, decorative, or conceptual pieces not meant for use). Details about the contest can be found [here](#) on the AAW website. See past winners at the AWFS website [here](#).



AAW GRANTS FOR WOODTURNING EDUCATION

The American Association of Woodturners (AAW) has an Educational Opportunity Grant (EOG) program which helps provide woodturning educational opportunities including financial grants, grants for AAW Symposium registration, and lathe grants. Any [member of AAW](#) can apply for one of these grants. The grant application is online via the AAW website and the deadline for submitting is **December 31st**. As a club, we are going to submit a grant to purchase a lathe and tools for the Lafayette alternative school where **Chad Dawson** volunteers.

UPDATE ON ARROWMONT

As many of you know, the wildfires in the Great Smoky Mountains National Park spread to the city of Gatlinburg and the Arrowmont Campus. The Arrowmont staff safely evacuated and none lost their homes. They lost two dorms, Wild Wing & Hughes Hall and the maintenance building with all the equipment. The core campus is intact—including all studios (including the wood studio complex), Red Barn, Pollard, Teachers, Staff House, the main building, and Turner were saved. The staff of Arrowmont is still trying assess the damage and expects to be operational soon.

ASK MR. RENRUT

Mr. Renrut will answer your questions. Please feel free to send your questions by the 15th of each month to the editor at secretary@cnywoodturners.org.

Dear Mr. Renrut,
I am planning on selling my pieces at craft shows and most of the ones I will be at are outside. I will be in a tent but if my turned pieces are exposed to light rain they will spot. Is there something I can use to protect my turnings from water spots?

Spotty

Dear Spotty,

As a matter of fact, there is a product—shoe polish! No, not black or brown but Kiwi Clear (or Neutral) shoe polish. Apply it to the outside of your pieces to repel water on anything that might be exposed!

Best of Luck with Sales!

Dear Mr. Renrut,
I like to use faceplates for much of my turning so I bought a few new ones. They look great but I was wondering if there is something I should do to them before using?

Faceplate Fancier

Dear Faceplate Fancier,

Isn't fun to get something new? But, you are right, you should take time to scratch the surface of your faceplates before using so there is something to grip the wood. Also, my guess you already know, don't ever use drywall screws to attach your blank to the faceplate. Why? They are too thin and too brittle. Use sheet metal screws as they are case-hardened and have deeper and sharper threads. The new square-drive or torx screws can also be used.

Turn Safe

Hey Mr. Renrut,
I was using my Beall Buffing System the other day attached to my lathe. I was having problems buffing the inside of a deep bowl. Do you know if there is a way to allow me more access?

Buffy

Dear Buffy,
I was having the same problem. A quick look at the Beall Tool Company website and I found what they call a Buffing Mandrel Extension which adds 3 inches when used with your basic adapter gives you a full 6 3/4 inch reach.

Can't Wait to See Your Deep Bowls!

Dear Mr. Renrut,
Last evening I received chuck jaws from a vendor so I was looking forward to practicing drilling blanks on some scrap wood which had been cut to size. The chuck jaws nicely screw/thread into the headstock and the drill chuck with MT2 sits in the tailstock. All was going smoothly as I moved the tailstock with drill bit in and out of the wood held in the jaws. Then a wobble of what looked like the MT2 in the tailstock and by the time I could reach over and turn off the lathe, I was biffed by something in the face shield and the MT2 went flying. How do I secure the MT2 in the drill chuck and in the tailstock so that this does not happen again?

Whoops

Dear Whoops,
There will always be a threat of this happening especially when backing out since there is not constant pressure forcing the drill chuck to stay in the MT slot. **Always** hold the drill chuck with your hand (gloved or not). No more flying chuck with sharp drill bit coming at my face.

Think Smart & Stop the Flying!

Dear Mr. Renrut,
When I am buffing or sanding small objects I sometimes have the pieces fly out of my hands right into the pile of shavings. Got any tricks to help me find pieces faster?

Flyer

Dear Flyer,
Wow, I thought I was the only one who has that problem. Take a paper bag and attach it so the buffer or sander is just inside the bag. That way if you loose the handle, the piece will go into the bag. I've heard of people putting pieces with oil finishes into a bag to blow out the extra finish. Just be sure to hold onto the piece inside the bag!

Hold On!

Match the Photo to Mr. Renrut's Response!



TWENTY WAYS NOT TO TURN A BOWL

The Right Stock

- 1. **Too Big**—You will learn a lot more about turning techniques by turning lots of small, shallow bowls than you will by turning one or two really large pieces.
- 2. **Too Valuable**—DO NOT PAY FOR PRACTICE WOOD
- 3. **Too Hard**—Green wood is best to start with!
- 4. **Too Deep**—Start out with a small (8" diameter) platter before attempting any type of bowl. Then transition to a shallow bowl, just slightly deeper.
- 5. **Not Ready for Prime Time (or Finish)**—Think practice pieces to get comfortable with the bowl gouge. Form the outside to start until you feel comfortable and then move to the inside.

The Right Speed

- 6. **Too Much Speed**—Before mounting anything on the lathe, turn on the lathe to determine where the speed was set when it was last used. Get into the habit of turning the speed down whenever you end your turning session!
- 7. **Too Much of a Hurry**—Momentum builds at high speed and stopping a piece of wood that has momentum could produce disastrous results.
- 8. **Standing in the Wrong Place**—Always stand to one side of the workpiece when you turn your lathe on!

The Right Tool

- 9. **No Roughing Gouge for Bowl Work**



- 10. **Big Gap at Tool Rest**—Once the tool extends more than 1" or so beyond the rest, stop the machine and move the tool rest closer.

- 11. **Moving the Tool Rest with Lathe Running**—DON'T EVEN THINK ABOUT IT!

- 12. **Not Following the Curve**—Move the tool rest around the shape of the bowl.

- 13. **Wrong Direction**—For face-grain bowls, cut uphill or from bottom to top on the exterior. On the interior, cut downhill or from the rim to the center.

- 14. **No Body Movement**—Learn the woodturner's sway

- 15. **Dull Tools**—When in doubt sharpen your tools. And be sure to touch up your edge on the grinder before making your final cut.

- 16. **Too Much Pressure**—This forces the heel of the tool into the surface and bruises the fibers, leaving lines that remain visible. Relax and let the cutting edge do the work rather than forcing it.

The Right Mount

- 17. **Wrong Screws**—Don't use drywall screws to screw a blank to a faceplate. Use sheet metal screws. *Hey, didn't Mr. Renrut tell us this?!!!!*

- 18. **Difficult Grain**—End grain requires larger and longer screws. Punky or spalted woods will be hard to get a screw to hold. Sapwood does not hold screws as well as heartwood.

- 19. **Poor Grip**—If you are making a tenon to put in your chuck, make the tenon the right size and shape. Punky wood and sapwood will give you the same challenges.

- 20. **Loose Fit**—Green wood turning REQUIRES that you regularly tighten the jaws of the chuck REPEATEDLY as moisture is forced from the blank.

If it looks dangerous, it probably is so,
STOP, DON'T DO THAT!



Excerpted from the Nick Cook article that is contained within the AAW book *Safety for Woodworker*

This article gets you ready for the January demonstration by Charlie LaPrease on turning bowls!

SHAVINGS & SCRAPS

Club Tool Raffle

The tool raffle for October thru December is a Nova G3 Chuck Package. We ordered the 1 x 8 insert and the ¼ x 8 insert. The winner will get the insert that works for their lathe. The club will raffle off the remaining insert. This is a \$300 value! Don't forget to get your ticket! Tickets are 1 for \$1 or 6 for \$5. **We draw this month! Just a few tickets left!**

**Club Video Rentals**

The club maintains a library of various videos in DVD format for rental by members. The cost is \$3 per month. If you miss a month to return a video, you must pay \$3 additional for each month over the initial month. We urge you to try to return on time as many others have interest in the videos as well. If you have suggestions of videos to be added to the collection, please let **Phyllis Radford** know. Donations are always welcome.

Club Sandpaper Sales

The club purchases Carborundum sandpaper in bulk for resale to members and guests at meetings. Ten grits of sheet sandpaper are available at **\$0.75** per sheet – 80, 100, 120, 180, 240, 320, 400, 600, 800, and 1000. Sanding pads of 5 different grits – medium (120-180), fine (320-400), superfine (500-600), ultrafine (800-1000), & microfine (1200-1500) are also available at **\$1.50** per pad.

Club Tool Loan Program

The club owns 10 lathes, 5 sets of basic tools, 2 face masks, 2 chuck sets, 5 pen mandrels, and several other miscellaneous tools. Members may borrow equipment if they have a need. Tool loans must be limited to a **maximum of 2 months** and tools must be returned where loaned from, not handed off at meetings. The Board recognizes that tools are often loaned because beginners need to figure out what to purchase and we encourage you to borrow the club tools as a way to determine what works for you.

Club Discount Programs

Several different vendors offer discounts for members of local woodturning clubs and some if you are a member of the American Association of Woodturners (AAW). Currently, we know of the following discounts:

Carter & Son Toolworks—10% discount on their variety of premium quality interchangeable woodturning tools. Use code **club10** at checkout. Orders can be placed by phone at **(206) 878-7672** or from their internet page at www.carterandsontoolworks.com. When ordering by phone, mention the 10% *Club Discount*.

Hartville Tools—A discount of 15% for members unless the items is on sale or is on clearance and the prices is better. Orders can be placed by phone at **800-345-2396** or from their internet page at www.hartvilletool.com. When ordering by phone, identify yourself as a *Club Discount Program Member*. When checking out via the internet, type *Club Discount Program Member* in the Checkout Notes.

Klingspor—A discount of 10% off all non-powered merchandise in the catalog. Call (800) 228-0000 and identify yourself as a member of the *CNY Woodturners*. Check their website www.woodworkingshop.com for product info.

Rockler—Buffalo Store—A discount of 10% for members unless the item is on sale, a power tool, Leigh jig, CNC, Festool, or gift card. Must show name badge.

Do you know of a company that offers discounts to woodturning club members? Please notify [Larry Prunotto](mailto:Larry.Prunotto), our Vendor Relations chair. Check back regularly for new deals!

Anchor Seal Available Again!

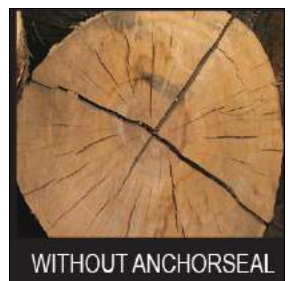
Anchor seal is used to seal the end grain of green wood to encourage slower drying and thus less cracking. The club purchased another 55 gallon drum of anchor seal and is dividing it into gallons and sold at meetings. The jugs are sold for \$10 each at Charlie's sale table during most meetings.

CLEAN GALLON WASHER SOLVENT JUGS NEEDED for anchor seal—Not flimsy milk jugs. Give to **Jim Yonkers** at meetings.

Know of a Vendor Discount Program? Tell someone so it makes it in the newsletter!



WITH ANCHORSEAL



WITHOUT ANCHORSEAL

SHAVINGS & SCRAPS

Community Support—Tops

The CNY Woodturners donate handmade tops that are sold at the Witter Agricultural Museum to benefit its operation. We had just a few left from our sale. We are now collecting for 2017. Any tops delivered to **Barbara Raymond-LaPrease** by the end of the November meeting will be counted toward your totals for the end of year raffle. Please follow some rules when making tops:

- ✓ No tops should be made from old CDs or DVDs
- ✓ For safety purposes tops should be **larger than 1 1/4"** to meet federal requirements.
- ✓ Please take time to decorate your tops – using various tools to add texture and/or colorize them when using plain wood.

If you need help turning a top, start the demonstration info in the August 2015 newsletter (on our [website](#)) or ask for help.

Community Support—Ornaments

Members of the CNY Woodturners support a local effort to donate funds to charities that support children through the sale of donated ornaments and other turned objects. Since 2006, members have created and donated a wide variety of things. We accept everything so objects can be ornaments but we also welcome items like yo-yos, magnets, clocks, seam rippers, letter openers, bottle openers, light pulls, keychains, candlesticks, light bulbs, etc. Our current charity is the local Ronald McDonald House. Sales are coordinated by Barbara & Charlie LaPrease. Donations are recorded, noted in newsletters, and provide the basis for end-of-year awards. See page 14 for more information on this project.

AAW Offers Guest Membership!

The American Association of Woodturners (AAW) now offers a 60 day *Guest* membership program! You must setup an account but thru it will you be able to review what the AAW has to offer. You will not have access to everything but you will have access to enough to learn about the vast array of resources available from AAW! Check it out by clicking [here](#).

Latest Issue of *American Woodturner* Available Now!

If you are an AAW member, the next issue of the *American Woodturner*, it's flagship journal, should have arrived at your home, if you receive a hardcopy. Inside are the following:

- ✓ Turn a Pencil-Stub Holder
- ✓ Inside-Out Turning Made Easy
- ✓ A Beginner's Shopping List: Turning Tools and Sharpening Gear
- ✓ Tuning Up a Bench Grinder
- ✓ Put Some Spring in Your Toys
- ✓ Blast-Carving
- ✓ An Artist's Progress: Advice from a Master
- ✓ Half 'n' Half: Split-Turned Forms that Fit Together
- ✓ Custom Lathe Accessories from a 3D Printer
- ✓ Tech Ed Project Links Old and New
- ✓ Nurture via Nature: The Blossoming of Dixie Biggs

Not an AAW member? It's just \$60 a year and you get so much—not just the bi-monthly journal—you also get:

- ✎ *Woodturning FUNDamentals*, a bimonthly digital publication with great projects, tips, techniques, videos, and other information
 - ◇ November 2016's issue contained project information for a Celtic Knot Beer Capper, a Turkey Pot and Striker, Angel Christmas Ornaments, A Lazy Susan AND technique articles on chucking, spindle nomenclature, making a morse taper, and making the most of your Joyner jig. Plus links to video tips and other tips!
- ✎ Several mini-woodturning foundation books—*The Nitty Gritty of Sanding; Got Wood? Now What?; Safety Guidebook for Woodturners; Safety for Woodturners; Turners are TOPS; Sharpening Woodturning Tools; Setting Up Your Woodturning Workstation*
- ✎ Several mentoring resources
- ✎ Access to 30 Years of the *American Woodturner* via a newly update search engine
- ✎ Access to *AAW Video Source*—a searchable database of pre-screened videos
- ✎ Access to the *AAW Forum*—a way to interact with your fellow woodturners worldwide

AND MUCH MORE! Join Today!

Not an AAW member? There are so many great resources available from them!

Club Goals 2016	
Tops	
Goal	1000
Current	770
Ornaments*	
Goal	150
Current	178
* "Ornaments" includes a variety of items used for the sales to benefit local Children's Charities	

Club Goals 2017	
Tops	
Goal	1000
Current	0
Ornaments	
Goal	150
Current	0

SHAVINGS & SCRAPS

Sharpening Services

One of the most asked questions is *where can I get table saw blades and other tools sharpened*. The Sharpening Shed in Cicero closed and the person who purchased the tools hasn't really started up the business.

We Know of 2 Options:

Paul E. Hart runs a service at 7902 Kirkville Rd, Kirkville, NY 13082. The phone number is (315) 656-2899. Phyllis noted that her father has previously used the service. The prices depend upon the number of teeth and size of blades. He also sharpens hand saw and replaced tips on saws. The flyer she provided has the following statement: "All saws on being received will be cleaned, checked for run out, minor retension (no charge), sharpened, polished, and dipped in plastic to protect the tips and prevent rust." If you use the service, please report back.

The second is an old friend – **Gordon Scholfield**. He is still doing sharpening out of the Tweeter Feeders store which is located on the east side of Route 57 just a half mile north of Route 31. The store is at the end of a group of buildings. The Premo sheds business is across the street. His prices are reasonable (per Charlie). If you use his services, let me know. There is a price list in the store at the service desk.

Thermal Finger Covers

Are you doing some woodburning and find your fingers getting hot? There's a new product available from Treeline – *Thermal Finger Covers*. A 3 pack of the covers costs just \$4.99! The covers are made of heat resistant silicone and designed to be resistant to 400 degrees. They fit almost any size finger and easy to put on. They come in various colors. Treeline is at www.treelineusa.com or 800-598-2743



Sanding Pads

At the October meeting, Mel Taber talked about and showed some pads for sanding that looked like mesh. They are called **MirlonTotal**, nicknamed *Scuff Pad*, and are manufactured by Mirka. The pads come in three grits that are useful for woodturners – 360, 1500, and 2000. Each pad is 6" by 9". They are packaged in boxes of 20. Mel purchases his through Beaver Industrial Supply (beavertools.com) [800-365-6677].

Red → "Very Fine"

Grey → "Ultra Fine"

Beige → "Micro Fine"

The cost per box is \$16-\$18 per box.



Local Source for All Sorts of Filters

Jerry Holbrook found a great local source for filters of all different sizes. He needed a 24" x 24" x 4" 30/30 filter for the Oneida Air dust collector. He found them at a firm called EDCO. Well, **Robert Love** reports that they are now called **Camfil USA** (<http://www.camfil.us>) and they have moved to 6600 Deere Road, Syracuse. The phone number is (315) 468-3849. Robert reports the prices are still great!

Mike Shuron, an SWWA member who relocated to Kentucky, says that he is buying the filters for his Jet and Delta air cleaners on the internet via FilterBuy (<https://filterbuy.com>). He states that first time users receive \$10 off and the prices are better than Rockler or Woodcraft.

Did you find a great product that should be shared? Tell Barbara so it makes it in the newsletter!



REGIONAL MEETINGS & CONFERENCES

Finger Lakes Woodturners

Finger Lakes Woodturners (FLWT) generally hold their meetings on the third Thursday of each month from September to May. Their next meeting is Friday December 15th with a holiday themed round robin with **Jim Echter, Ed Lehman, Gary Russell, and David Gould.**

Their second national turner will be **John Beaver** on the weekend of March 16th.

Check out their website for directions to the meeting at the Isaac Heating & Air Conditioning Training Center, 50 Holleder Parkway in Rochester.

<http://www.fingerlakeswoodturners.com>

Regional Symposiums

Several woodturning clubs hold symposiums on a regular basis. The closest, *Totally Turning*, will return to Saratoga Springs in 2017 on **April 1-2**. Obviously, the biggest symposium is the AAW International Symposium; but there are others you can also plan to attend. Here are a few within a day's drive:

January 27-29—*Florida Woodturning Symposium* at the Lake Yale Baptist Conference Center, Leesburg, FL. Featured demonstrators are **Clay Foster, Dale Larson, Avelino Sael, Kimberly Winkle, Dave Barriger, Don Geiger, Barry Reiter, and Tim Rowe.**

January 27-28 – *Tennessee Association of Woodturners 29th Annual Symposium* at the Marriott Hotel in Franklin, TN. Featured demonstrators are **Nick Agar, Cynthia Carden Gibson, Stephen Hatcher, and Frank Penta.** Includes tradeshow, instant gallery, banquet, and auction. Symposium cost of \$155 includes Saturday night banquet. Visit <http://tnwoodturners.org/symposium/>

March 10-12 – *Southern States Woodturning Symposium* at the Clarence Brown Conference Center in Cartersville, GA. Featured demonstrators will be **Stuart Moritmer, Dixie Biggs, Dennis Pallus** and Windsor chair maker, **Greg Pennington.** Also demonstrating are **Peggy Schmid, Robert Lyon, Steve Cook, and Nick Cook.**

April 1-2 – Northeastern Woodworkers Association present the **27th Annual Showcase & Totally Turning** at the Saratoga City Center in Saratoga Springs. Featured demonstrators will include Jimmy Clewes, Curt Theobald, David Ellsworth, Trent Bosch, Chris Pytlik, Kurt Hertzog, Rick Angus, Lynda Zibbideo, Willie Simmons, Ralph Mosher

Annual AAW Symposium

Start planning to attend the 31st annual AAW Symposium. It will be held in Kansas City, Missouri at the Kansas City Convention Center with the host hotel as the Kansas City Marriott on **June 22nd thru June 25th.** Get the latest information from the [AAW website](http://www.aaw.org). If you are planning for the future, the 2018 Symposium will be in Portland, Oregon. There is no word on where 2019 will be but rumors are circulating that it will be in Raleigh, North Carolina. The symposium features 3 days of woodturning demonstrations and meetings led by over 70 talented experts. Multiple rotations are held simultaneously so attendees have many types and styles of woodturning demonstrations available throughout each day. There is an instant gallery that you can enter with up to 3 of your own pieces. There is also the largest woodturning tradeshow anywhere, including tool and lathe manufacturers, vendors of wood and other materials, and suppliers related to woodturning.

AAW Member Deals!

Holiday Special
Buy a membership for a friend and get two DVDs for yourself **FREE!**

\$60 for the AAW membership and two DVDs

A gift certificate will be mailed to you for the AAW membership. DVDs included are AAW Masters Series "David Ellsworth, The Spirit of Woodturning" and "Dale Nish, The Woodturner's Mentor." Each video is 55-minutes in length. (A \$38 value.) Offer ends December 31, 2016.

Order online at woodturner.org or by calling 651-484-9094, 877-595-9094 (toll free).

Holiday Special
Buy a AAW 30th Anniversary Shirt and get *Woodturning Today* **FREE!**

Member price **\$20** Plus shipping

The tee shirt is pre-shrunk 100% cotton with a screen printed logo. *Woodturning Today* is a 256-page, full-color, soft cover book documenting the growth of woodturning and AAW. Offer ends December 31, 2016.

Order online at woodturner.org or by calling 651-484-9094, 877-595-9094 (toll free).

Holiday Special
Free Shipping on Book Set

The Nitty Gritty of Sanding for Woodturners, Safety Guidelines for Woodturners, Turning Miniatures: Essential Concepts as a Small Scale

Order today! **\$33** Member price. Set includes: The Nitty Gritty of Sanding, Turning Miniatures, Safety Guidebook. Free Shipping to U.S. and Canada only. Books may be shipped separately. Offer ends December 31, 2016.

Order online at woodturner.org or by calling 651-484-9094, 877-595-9094 (toll free).



CNY WOODTURNERS MEMBERSHIP

Membership in the Central New York Woodturners LLC is open to anyone interested in woodturning. The cost for a first time individual member is \$30 which includes the cost of a badge. **Renewals are \$25 per year** and due by March 1st. **Family memberships are \$35 per year** plus \$5 per badge for each family member needing a badge. Membership applications are available on the club website – www.cnywoodturners.org. The club leadership, with contact information, is listed right as a reference. Feel free to contact any club leader to ask questions, suggest programs, or deal with issues. You need to have an active email address if you are a member as the leadership sends many member communications via email as well as this newsletter. To read the newsletter you need to have a PDF reader product such as [Adobe Acrobat Reader](#) installed on your computer. Adobe Reader is free. Due to its size, we prefer not to send newsletters by mail. However, a limited number of hard copy newsletters are sent to members without email.



the journal, *American Woodturner*, with the online membership receiving it only online. You also have access to a large collection of online resources such as the publication *AAW Fundamentals* which is published on the off months from the journal.



AAW is an international organization of over 14,000 members of varying woodturning skills. In addition to receiving current issues of the journal, *American Woodturner*, membership also provides online access to all past issues of the Journal from 1986 forward. Access to a Resource Directory is also available only to members. Members of AAW also receive savings of up to 50% on AAW merchandise, including project books, DVDs, logo apparel, and more. Members can apply for an educational opportunity grant whereby an individual can receive compensation toward woodturning education for expenses such as tuition, registration, travel, lodging, meals, etc. They can also apply for professional outreach program fellowship grants to encourage creative growth or research, or to provide inspiration for new directions in turned wood art. The AAW Forum is also available to members as are other restricted articles and resources on the [AAW website](http://www.woodturner.org). Members receive a discount on registration for the annual Symposium which is in Kansas City, MO in 2017. Check out the AAW website – www.woodturner.org.

The CNY Woodturners group was formed in September of 1998. It was accepted as the 121st chapter of the **American Association of Woodturners (AAW)** in November 1998. We encourage you to join AAW as it is an excellent organization with great resources as a member. Membership in AAW costs either \$43 for an online only or \$53 for a paper-based membership. Each membership includes the 6 issues of

For membership applications, directions, and additional information on club events, checkout the Club website, www.cnywoodturners.org.
CNY Woodturners LLC, P O Box 2280, Liverpool, NY 13089-2280

COME LEARN. LEAVE INSPIRED.
 Attend amazing demos and panel discussions.
 Meet captivating people.
 See incredible work.
[Click here for details and registration.](#)

REGISTER TODAY!

AAW'S 31ST ANNUAL INTERNATIONAL SYMPOSIUM
 June 22-25, 2017
 Kansas City Convention Center, Kansas City, MO

OFFICERS

The Officers & Board of Directors have taken a break for December. They will return in January.

If you need to contact someone, find their information in a previous newsletter.

OUR 2017 MEETING SCHEDULE

Date	Topic	Demonstrator	Workshop Date/Location
January 10 th	Basic Bowl Turning	Charlie LaPrease	January 21st / Eight Acres
February 14 th	Live Edge Turning	Terry Vermilyea	February 18 th / Eight Acres
March 14 th	Rolling Pins	Bob Ireland	March 18 th / Eight Acres
April 11 th	Miniature Fruit Bowl	Dawn Petrie-George	April 15 th / Eight Acres
May 9 th	Lighthouse Ornament	Don Lum	May 13 th / Eight Acres
June 13 th	Turning a Lamp Base	Greg Potter	June 17 th / Eight Acres
July 11 th	Jigless Hollowing!	Dick Parker	July 15 th / Eight Acres
August 8 th	Marbling	Barbara Raymond-LaPrease	August 12 th / Eight Acres
August 24 th to September 4 th	Demonstrate at the New York State Fair	All Members!	Each day 10am to 8pm in the Witter Agricultural Museum!
September 12 th	Natural Edged Bowl	Mike Gridley	September 16 th / Eight Acres
October 10 th	Skew It!	Dick Hoblitzell	October 14 th / Eight Acres
November 14 th	TBD	Ed Siegel	November 18 th / Eight Acres
Wednesday, December 13 th	Holiday Gathering with Your Woodturning Friends!		None—Enjoy Your Holidays!

CLASSIFIEDS

Classifieds are welcome with the caveat that people notify the editor when entries are sold.

WANTED: We've received several requests for custom woodturning as a result of the Fair and general inquires. If you are willing to consider these, please send an email to info@cnywoodturners.org.

FOR SALE: Jet 1014 Mini Lathe & stand. Barely used. \$425. Contact Bob Ireland at ireland@twcny.rr.com if interested or if you have questions.

FOR SALE: Jet Model 1442 Lathe. Lightly used over 10 years. \$1000 or best offer. Contact Kris Dulmer at (315) 559-7360 or kdulmer@hotmail.com

FOR SALE: New Table for Excalibur 21 – It is the one with built-in dust collector. Fits any Excalibur with tilting table. \$50. Contact Jim Ireland at waterlil@twcny.rr.com or (315) 592-7354.

FOR SALE: Earlex 5500 HVLP Spray Unit includes extra needle, cleaning kit, small tool box for parts, 1 gal & 1 quart Target Water Base Lacquer, 1 gal Target Water Base Sanding Sealer. \$265. All new & purchased for >\$400. Contact Bob Henry at (585) 323-1166 or bbhny@yahoo.com

FOR SALE: Gemini Wood Carver/Duplicator
No Reasonable Offer Refused vvv The machine is complete and has the decoy/gunstock option included. Ready to put on your bench and have running in an hour or less. I will assist you in set up if you want. Made in USA in Elbridge, NY. Contact Mel Taber, (315) 487-7855 or

mtaber3@verizon.net

FOR SALE: Rockwell/Delta Lathe on a factory metal stand. Very good shape; no issues. 11" over bed; 14" over cut out; 37.5 between drive arbor & tailstock; ½ HP; multiple speeds with variable speed pulleys on headstock & additional on transfer shaft. \$250. Also Craftsman lathe on factory metal stand. \$80 as is. Contact Larry Hartle at (315) 406-7079 or jawk50@aol.com

FOR SALE: Used bench vises. Good quality, commercial grade. Price \$50 to \$75 each. For more info, email Bud Millis at emillis@twcny.rr.com or call (315) 297-7525.

FOR SALE: LUMBER – Kiln & Air Dried Hardwoods (PA cherry, chestnut, maple, white oak, butternut, etc.) and some softwoods available. Also Black Walnut and English Walnut slabs available. For more details, email Bud Millis at emillis@twcny.rr.com or call (315) 297-7525.

FOR SALE: Craftsman COPY CRAFTER. \$150. Contact Fred Brockway at (315) 521-5873.

Memphis Hardwood Lumber – Situated on the bank of the Old Erie Canal, over 40 species of domestic and exotic hardwoods – including turning stock. Only local supplier for Baltic birch plywood in different sizes – 1/8", ¼", ½", etc. For more information, see website www.memphishardwoodlumber.com. Custom engraving also available. Located at **6535 Church St, Memphis, NY**. Open M-F 8am–4pm. Call for Saturday appointments. (315) 689-3949