



UPCOMING MEETINGS & EVENTS

February 14, 2017 — 6:15pm
Monthly Meeting — Husband Adjustment Tool—Bob Ireland Challenge — Bowl

Held @ Belgium Cold Springs Station 1 Community Room, 7920 River Rd, Baldwinsville

February 25, 2017 — 9am
Monthly Workshop — Husband Adjustment Tools

Held @ Eight Acres Event Center, Baldwinsville

Details on page 11

March 14, 2017 — 6:15pm
Monthly Meeting — Live Edge Turning — Terry Vermilyea

Challenge — Rolling Pin

Held @ Belgium Cold Springs Station 1 Community Room, 7920 River Rd, Baldwinsville

March 18, 2017 — 9am
Monthly Workshop — Live Edge Turning

Held @ Eight Acres Event Center, Baldwinsville

INSIDE THIS ISSUE:

- ◆ Mr. Renrut — p. 16
- ◆ Cutting Your Blank — p. 18
- ◆ Lafayette Big Picture Program — p. 17
- ◆ Wood Education— Mulberry — p. 14
- ◆ January Demo—Bowl Turning — pp. 7-8
- ◆ January Workshop Photos— pp. 9-11
- ◆ 2017 Demonstration Schedule — p. 26
- ◆ February Crossword Puzzle — p. 13

OUR FEBRUARY MEETING

Members and guests of the Central New York Woodturners will gather on Tuesday, February 14th for our monthly meeting which starts at 6:15pm. The meeting will be held in the **Community Room at Station 1 of the Belgium Cold Springs Fire Department at 7920 River Road, Baldwinsville** [directions on page 2].

Our topic for February is Husband Adjustment Tools—aka rolling pins. Our presenter will be **Bob Ireland**. There are many different styles of rolling pins. The photo right shows a few. During the demonstration, Bob will talk about the various ways a rolling pin can be created. Come to the meeting and learn some new techniques for turning a rolling pin.

In addition to Bob's demonstration, Mark will take your membership renewals! Yes, it's that time! Renewals are \$25 per single or \$35 for a family membership. If you are joining for the first time, the cost is \$30 per single which includes a name badge or \$35 for a family plus \$5 per name badge.

Of course there's more! We will also hold our usual *Show & Tell* session and our *Monthly*



Challenge of Bowls based on **Charlie LaPrease's** January demonstration. Yes, you will also be able to rent videos and purchase sandpaper.

Plan on signing up for the workshop at the meeting also. The workshop is again one week later because Barb & Charlie, who host the workshops, have an event on the 18th. So, mark your calendar for **February 25th**!

Please plan on attending, bringing your recently completed items for the *Show & Tell* plus your entry for the *Monthly Challenge*. See you all on the 14th at the **firehouse!**

THE SUPER CHALLENGE!

The club's first ever *Super Challenge* was a resounding success! As we begin 2017, the Challenge continues!

Members are again encouraged to create one cohesive piece that includes at least **six (6)** topics from the 2017 demonstrations. Also, for anyone who did not enter the 2016 Challenge but enters in 2017, you will receive an extra point in the vote tallying!

WHAT WILL YOU ENTER IN 2017?

MEETING DAY CHANGES

You'll notice we are no longer meeting at the Fairgrounds. For now, our meetings will be at the Belgium Cold Springs Fire Department, Station 1. However, Fire Department events come first and they will be using the facility on Tuesdays through most of 2017. Therefore, starting in April, our meetings will move to the second Wednesday.

We know that means some may not make the meetings but we also know that others can now make the meetings.

Mark your calendars appropriately!

NOTES FROM OUR PRESIDENT

Considering that February is the shortest month of the year, it can certainly feel like it lasts forever. At least the shop is warm and by flipping the pages in the garden catalogs, I can pretend that warm weather is just around the corner.

We had light attendance at the January meeting due to huge variations of weather in the Central New York area. The Board decided that only if there is a *No Travel Advisory* in Onondaga County will our meetings be cancelled. Individually, you need to decide if you want to venture out. It is impossible to reschedule meetings. Even with the variety of weather, we had four new members attend and join—four we might have lost had we cancelled the meeting.

I am looking forward to my annual trip to Saratoga Springs for the NWA Showcase along with Totally Turning. The display galleries alone are worth the price of admission and the workshops are very informative. If you are fairly new to the art of wood turning, you should consider attending at least one of the two days of Totally Turning. The demonstrators that they attract are very good and you will certainly come home with new ideas. The dates are April 1st and 2nd! Plan on it! Need more information? Check out page 15 and the event website.

I am also excited to learn and let you know that the group that hosted the show in Lancaster, PA last year is planning on holding the show again this year on October 28th and 29th! The show last year was top notch and considering it was their first time, everyone that attended from our club commented that the show was very well run!

Remember we have a change of presenters for the next meeting. Our original schedule had Terry Vermilyea turning a live edge piece; but, Terry had to go out of town so we moved Bob Ireland up one month with his rolling pin demo. We are going to follow this with a rolling pin workshop on the 25th of February at

the Eight Acres Event Center. Terry will return in March to show a technique for turning a live-edge project. It is great to see that our monthly workshops are very well attended. One major purpose of the club is education. We are seeing many new faces at the workshops learning the craft of wood turning.

If you have not been on the American Association of Woodturners, aka AAW, website recently, I would encourage you to spend some non-shop time exploring some of the things they have to offer. You can find articles on almost any woodturning topic as well as a couple hundred videos that you can watch for free. If you are not a member of AAW, please consider joining – you can join for 60 days for free to see if you like what you see and I am sure you will. The AAW as an organization has come a long, long way over the last couple of years and they are very interested in listening to their members and clubs.

By the way, I need your help. I am looking for a member that would be willing to assist by storing and transporting the video equipment and act as a back-up to Bruce Swift who normally handles the equipment. Please consider volunteering.

Also, please remember that it is time to pay your 2017 dues. If you have not paid them yet, Mark will be collecting them at the next meeting or you can drop a check in the mail to: CNY Woodturners LLC—PO Box 2280 – Liverpool, NY 13089-2280. Renewals are still only \$25 per person and \$35 per family. It is great to see that our membership continues to grow.

In closing, I would like to remind everyone to check your smoke **AND** CO detectors as well as have an escape plan.

As always, stay sharp and turn safe. I am looking forward to seeing everyone on the 14th.

Doug North



**I need your help!
Please step up
today!**

DIRECTIONS TO THE BELGIUM COLD SPRINGS FIRE DEPT — STATION ONE COMMUNITY ROOM

Everyone comes from different directions. For your GPS, the street address is: 7920 River Road, Baldwinsville. New York 13027

General Instructions: Station 1 is north of John Glenn Blvd., east of Route 370 and south of Route 31 at the intersection of River Road, Hicks Road and Patchett Road. Everyone comes a different direction, whether it is thru Liverpool on Rt 370 or via Rt 690 (get off at John Glenn Blvd.).

DO NOT BLOCK STATION DOORS WHEN PARKING!

From John Glenn Blvd., take Route 370/Cold Springs Road north (there is a traffic light at the corner of John Glenn & Rt 370). Take your first right at Cold Springs (past the Elks) onto River Road. Drive 2 miles and firehouse will be on right. Park on the north side in the lot away from

the overhead doors. If you miss the right onto River Road, drive 2.2 miles north to Hicks Road. Take Hicks to the 5 way intersection, turn right onto River Road and then left into the firehouse parking lot.

From Fayetteville, Manlius, etc. Take Rt. 481 north to the Route 31 exit. Take a left onto Rt. 31. Drive approximately 3½ miles to River Road (it will be the 9th traffic light). Turn left on River Road and head south 2 miles to the 5-way intersection. Make a slight left to stay on River Road (after stopping for the 5 way stop sign). The fire station is just past this intersection on the left off River Road.

JANUARY 2017 MONTHLY CHALLENGE

The club holds a *Monthly Challenge* as part of its regular meeting. The Challenge is a way for all club members to have fun honing their turning skills using information and techniques learned during each monthly meeting's demonstration. Members are encouraged to bring an original piece they created after the meeting that fits the basic requirements of the Monthly Challenge and within the constraints

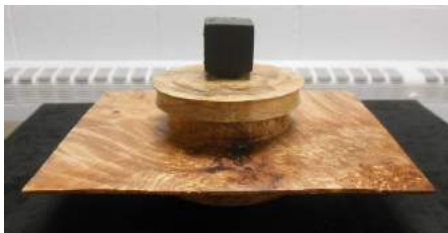
announced by the President. Generally, the Challenge for the next month is based on the previous month's meeting topic. For January the Challenge was to create a square bowl based on *Robert Love's* November demonstration. We had 13 people participate in the Challenge — one new to the Challenge. The People's Choice award was *Charlie LaPrease*. The Participant award was given to *Jim Yonkers*.



Charlie LaPrease
Walnut & Maple



Mike Gridley
Red Cedar Vases (top)
Walnut & Padauk (bottom)



Jim Yonkers
Maple & Ebony



Mike Malecki
Walnut, Yellow Heart,
& Padauk



Bob Ireland
Basswood & Hickory



Robert Love
Cherry

January Awards

People's Choice

Charlie LaPrease

Participant

Jim Yonkers

Congratulations!

The Challenge for February is a Bowl!
Let's beat our record for entries.
We need 25!
And, let's be creative!

JANUARY 2017 MONTHLY CHALLENGE



Jim Kent
Beech



Dave Grant
Mulberry (left)
Black Walnut (below)



Jerry Laffer
Poplar

Bruce Swift
Cherry



Ed Siegel
Hard Maple



Mel Taber
Walnut



It Even Turns!!

CHALLENGE PARTICIPANTS FOR 2017

Dave Grant (1)	Mike Gridley (1)	Bob Ireland (1)	James Kent (1)
Jerry Laffer (1)	Charlie LaPrease (1)	Robert Love (1)	Mike Malecki (1)
Larry Prunotto (1)	Ed Siegel (1)	Bruce Swift (1)	Mel Taber (1)
Jim Yonkers (1)			

REWARDS: Based on voting by attendees, a People’s Choice award is selected. A Participant award winner is selected from the remaining entries. Both receive special awards. All participants vie for year-end awards based on their year-long participation. Each month, the newsletter is updated to include the Challenge participants and the number of times they shared a piece. At the end of the year, a random drawing is held that includes a ticket for each participant, for each month they entered a Monthly Challenge.

NOTE: All Challenge pieces must be constructed as a result of the demo at the meeting; In other words, created from the date of the meeting to the date of the next meeting.

JANUARY 2017 SHOW & TELL

Members create a wide variety of projects. Sharing those projects with others is a wonderful way to show members what you've completed lately as well as gain valuable feedback on your turning. We love seeing what you create. Remember that long explanations impact other participants' ability to talk about their projects.

When you bring something in for *Show & Tell*, please enter as much information as possible on the sign-in sheet so there is an accurate record of your project in the newsletter. If you want, bring a card with the information and leave it with the sign-in sheet. Please put your name on a card and place it with your entries to make it easier for the photographer.



Mike Gridley
Red Cedar Bowl with Lacquer Finish



Doug North
Ash & FOG Bowl with Walnut Oil Finish



Jerry Laffer
Donut Chuck



Bob Ireland
Cherry Saueracker Shell with Odie's Oil Finish*



Ed Siegel
Maple & Chechen Bottle Stoppers with Friction Polish Finish



Maple Vases
by Jim Kent!



* Idea from article in Canadian Woodworking by Lisa Chemerika at this link: <https://www.canadianwoodworking.com/plans-projects/turn-saueracker-shell>

JANUARY 2017 SHOW & TELL



Charlie LaPrease
Walnut Bowl with Odie's Oil Finish

Dave Grant
Buckthorn Vase, Dyed with Spray Lacquer Finish



Mike Malecki
Maple Burl with Turquoise Filling



Jim Yonkers
Pin Vises



Mark Anastas
Walnut Burl Bowl (left)
Box Elder Bowl (right)
Finish on Bowl is *Toothpaste**

If you are developing new techniques for a turning, why not put together your technique into a meeting demo or even an article for the newsletter! You will learn even more!

** Mark & Charlie often say their finish is 'toothpaste'. Remember, Charlie puts his homemade finishes in toothpaste bottles, so always ask more!*

**JANUARY 2017 DEMONSTRATION
BOWL TURNING WITH CHARLIE LAPREASE
WITH HELP FROM MARK ANASTAS**

On Tuesday evening, January 10th, about 35 members of the Central New York Woodturners braved some winter weather conditions to attend the monthly meeting. The featured demonstration was **Charlie LaPrease** discussing how to turn a bowl. Charlie was assisted by his mentee, **Mark Anastas** before returning to college.

Charlie began by asking attendees what they would like to learn in the session. Several ideas were put forth, all of which Charlie handled during the demo.

Mounting a blank can be done in one of several different ways.

Deciding which way you use depends on your tools and your intent. Lathes generally arrive with a four point drive center.

But you can also use a two point, or various sizes of steb centers. With each of these methods, you can change the angle of the wood before turning which allows you to enhance your bowl.

Two other ways to mount the blank don't give you the same option but certainly are excellent methods to use. You can use a face plate mounted with screws—use sheet metal screws NOT sheet rock screws!- or you can use a screw chuck with a worm drive.



So how do you get a blank from a piece of wood. Charlie showed how a blank is cut using a sample he created. He then explained how the blank could be used to create a bowl. A blank can be oriented in two ways—with flat side up or with it down, so the pith



facing up or down. If the pith faces up then the rim of the bowl will be along the flat face and you will produce a larger bowl. With the pith (flat face) facing down, your bottom is in the flat face and the bowl will be smaller. You make a decision based on your intended result.

Also, when first cutting your blank from a log, you can change the appearance of your final bowl. A few years ago, we ran a multi-month feature about this. We are republishing this feature starting this month. See page 18 for its start.

Charlie took a blank to the lathe. As he mounted it, he noted a variety of safety issues for everyone. First, always turn the speed down on your lathe after shutting it off or before starting it. Second, make sure that head stock turns freely. Third, do not lock the spindle lock on the tailstock, but of course lock the tailstock into place. And fourth, never move the banjo & tool rest if the lathe is turned on.

Why not lock the spindle lock? When you are turning, over time, the connection between the tailstock and the wood will loosen—it's inevitable, especially with wet wood but also with dry. You'll want to regularly tighten that connection and having the spindle lock locked will limit the ease in which you can resolve the issue. Also, when tightening your tailstock, start with the handle at 12:00, then give it a clockwise turn to tighten it. Why? The weight of the handle will naturally drop as you turn, and with it on the 1:00 side, it will tighten naturally rather than loosen.

Once the blank was mounted and adjusted to get it as in balance as possible, Charlie turned the lathe over to Mark to turn the bottom and eventually add a tenon to it for holding in a chuck. Mark started the lathe, let it come up to a comfortable speed for starting out. He addressed the blank with a bowl gouge to start, making sure that he had three points of contact with the tool—up against the body, his right hand on the handle, and his left hand holding the tool on the tool rest.

With reference to holding a bowl in a chuck, there are two ways—you can squeeze or expand. Charlie likes to squeeze a tenon rather than expand but sometimes the wood determines which way you will go. The tenon size should match you jaws with them just a little bit open. Also, your tenon must conform to the shape of your chuck—if your chuck's jaws require a dovetail, you need to make the tenon with a dovetail. If your jaws are square, make the tenon square.

While turning the bottom, Charlie talked about cutting uphill—against the grain—versus downhill—with the grain and the result of each style of turning. As is common with most turning demonstrations,



Use Calipers to Measure Your Chuck's Jaw Size so You Can Create a Tenon that Fits



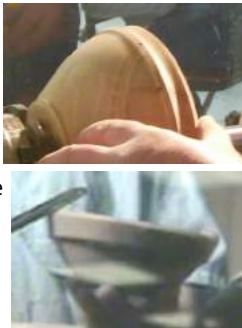
JANUARY 2017 DEMONSTRATION, PAGE 2

attendees asked a variety of questions which Charlie handled well, often with jokes. The speed at which the lathe was operating was naturally one question. Another was the angle of the tool. Charlie noted that the angle of the tool is based on the grind as well as the height of the lathe, your height, the tool rest height, what is comfortable, how you are standing, and the way you are holding the tool.

Charlie reminded everyone that the angle of the tool is the direction that the tool points is the way it will cut. When asked how often the tools should be sharpened, a discussion of tool steel occurred. Charlie noted that on the better tools, the inside of flutes are polished. If you have lesser quality tools, polish the inside of the flute. When pressed to not be a politician and bypass the question, Charlie talked more about sharpening as your tool feels dull and even using a diamond honing card in between sharpenings on the grinder. Mark noted that even the species of wood will determine how often you sharpen.



Charlie likes to add a *feature* along the top or rim of the bowl. Doing so adds interest to the bowl. He's experimented with a variety and urges everyone to try something. Yes, you could use special texturing tools but use your tools to design an edge. For the bowl he was turning, he created a rib design. He also creates an angle on the top that creates a more pleasing edge.



After completing the outside, normally Charlie would perform any sanding needed and then put on a finish. For the meeting, no sanding or finish. Instead, Charlie removed the bowl, replaced the drive center with a chuck. One attendee expressed concern that the nipple on the bottom needed to be removed first. Charlie noted that the nipple allows you to reference the center so leave it on for now. Make sure that it is not too fat; length does not matter as it will go through the chuck.

Charlie mounted the bowl in the chuck, using the center created by the steb center to help center and balance the bowl in the chuck. He tighten the chuck around the tenon, making sure to hit each hole once plus one. At a low speed, he tested that the bowl was secure and evaluated whether it was off.

He then removed the tailstock and Mark stepped up to

cleanup the edge. Mark then proceeded to start cutting the inside.

As he moved along, Charlie discussed how some people (including some professionals on the "circuit") will use a forstner bit to drill out a large amount of the center of the bowl to reduce the amount of cutting needed. He noted that doing so could weaken the structure of the bowl and cause it to collapse, especially if you don't have the edge complete..

Of course, if you have a coring system, you could core out the center and reduce your time creating the bowl.



When removing the inside, work in levels, completing each section as you go. If you have an issue and need to return to the top (like Charlie did), you will encounter chatter and vibration.

While Mark was clearing out the bowl, Charlie took time to talk about tools, the development of tools over time and reminded folks that tang-based tools should never be used when turning a bowl. Charlie then took over and continued to remove the inside from the bowl.



In the interest of time, Charlie did not finish . However, he showed folks how to complete the bottom of a bowl using another piece. He would normally finish shaping, sand as needed, and then apply a finish.

To take care of the bottom, Charlie inserted a worm



drive into the chuck and attached a small jig to the drive. Then, he place the non-rubber side of a mouse pad against the jig, placed the bowl over the mouse pad and jig, and then brought the tailstock center to the center of the bowl bottom. The center was easy to find because the nub was left on! At that point, he finished the bottom, creating a slightly concave to the bottom and decorated as needed. The final nub is knocked off with a hand chisel and mallet, the spot is sanded, and the bottom finish is applied..

Finishes

Preserve is a great finish—available from Klingspor online

Odie's Oil is also good

Make Your Own—Use beeswax, mineral oil, etc.



JANUARY 2017 WORKSHOP

The January Saturday workshop was held at Eight Acres Event Center on the 21st. We had eight members who attended the workshop with Charlie and two mentors who helped out. Thanks Robert Love and Greg Potter. All but one of the attendees worked on bowls while Robert worked with Kenn Pickard to

refresh the turning skills he learned many years ago. Each walked away with new knowledge and appreciation for turning. It really helps to have additional hands available at the workshops. Remember, mentors do not pay.



JANUARY 2017 WORKSHOP—MORE PHOTOS



SATURDAY WORKSHOPS

Saturday workshops allow members to receive additional training on a subject presented during the regular meeting demonstration as well as an opportunity to get basic turning experience with help from mentors at the workshop. Information about each workshop is provided so you are aware any tool and/or wood requirements. There is a \$5 fee for each participant. Pre-workshop sign-up is desired since many of the workshop instructors travel a distance to hold the session. Most workshops are held from 9am to noon at the club's workshop space at the Eight Acres Event Center in Baldwinsville, the home of Barbara & Charlie LaPrease. Directions are available at the meetings or by email. Generally coffee and tea are provided. Snacks are always welcome.

Parking is either on the street (one side only please) or in the driveway to the barn.

**February 25th Workshop
Turning a Rolling Pin**

Join **Bob Ireland** on Saturday, February 25th (one week late) for a workshop where you can turn a bowl.

What should you bring? Bring a piece of wood at least 1.5" x 1.5" x 11" or see right for options. Also bring a chuck and your tools.

Questions? Ask at a meeting.
Please register at the meeting!

Mentors welcome to join us!

For the workshop, if you want to mimic what Bob demos, bring the following:
Wood: 2 - 2" x 2" x 5.5", 1 2"x2"x 4", 2 - 1"x1"x 3.5",
Hardware: 2 - Hex bolts 3"x1/4", 2- 1/4" nylon washer, 2 - 1/4" drive in threaded insert

JANUARY 2017 WORKSHOP—MOST OF THE PIECES PRODUCED

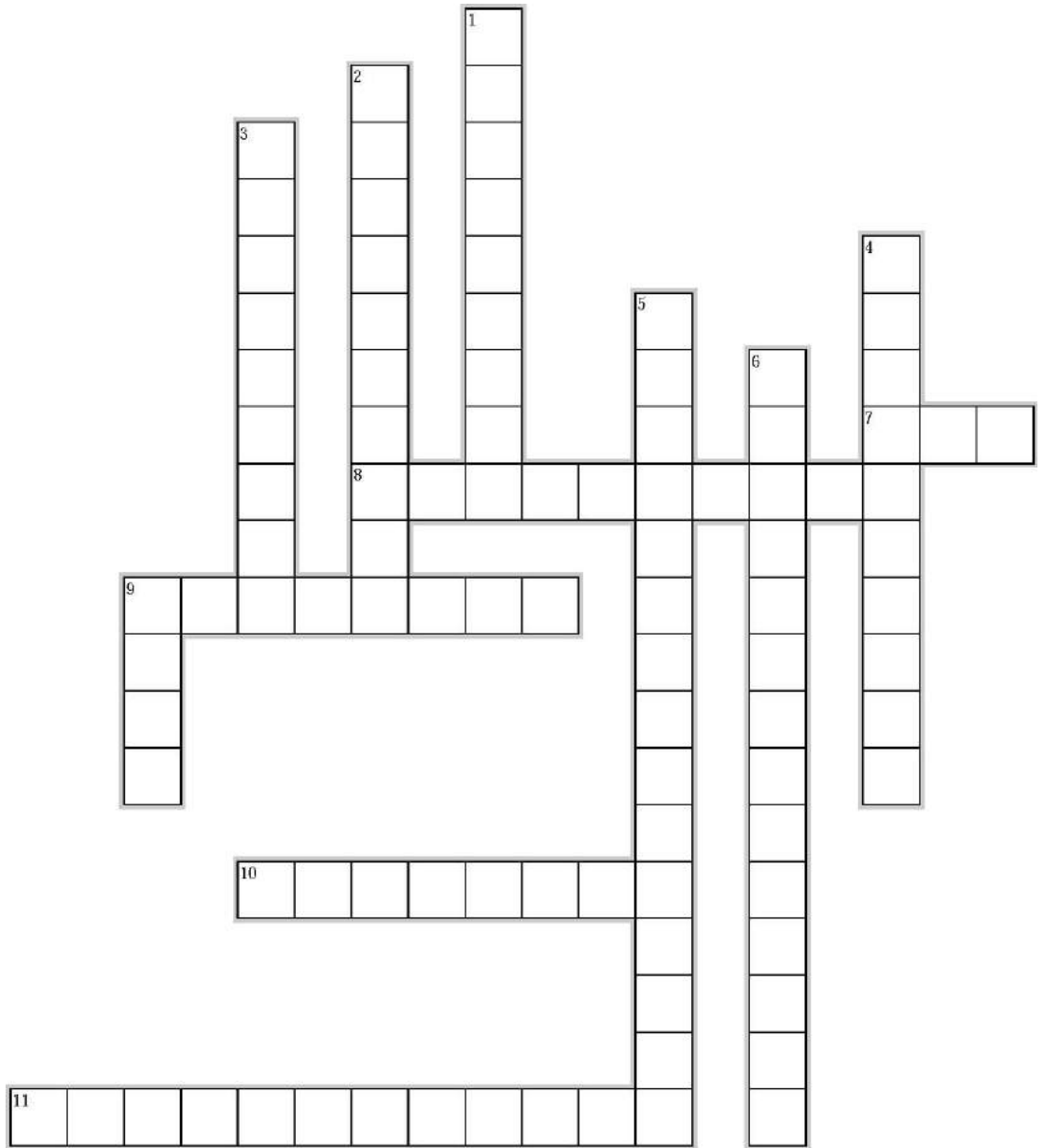


OUR JANUARY MEETING IN PHOTOS



OUR FEBRUARY CROSSWORD PUZZLE

How about a monthly crossword puzzle that reinforces concepts that are in the newsletter? Here are the puzzle and clues. Inside, look for the answers!



CLUES

ACROSS

- 7. American Association of Woodturners
- 8. Headstock center with spring loaded point which revolves freely
- 9. A natural wood finish safe enough to apply with bare hands and available at Klingspor
- 10. Tool for measuring, e.g. determining the size of your chuck!
- 11. A round object with tuning pegs developed by Tobias Kaye.

DOWN

- 1. Tool used for turning the inside of a bowl
- 2. A favorite finish of Mark & Charlie
- 3. Screw held in the chuck that can hold a bowl
- 4. Not a round one but a _____. Hint - What did Robert Love demonstrate in November?
- 5. Shape developed by a German ornamental turner. Hint - Bob Ireland showed one in January.
- 6. Woodturning symposium in Saratoga Springs on April 1 & 2, 2017
- 9. Center of a log

WOOD EDUCATION — MULBERRY

Mulberry (*Morus* spp.) trees are fast-growing, fairly large deciduous trees. There are 10 to 16 species of mulberry around the world. The best known and most commonly cultivated are red, white, and black mulberry. The **Red Mulberry** (*Morus rubra*) is native to eastern North America, including New York.

Mulberry trees provide excellent shade. The leaves vary but are generally large. Most trees grow from 20 to 60 feet tall. Some trees bear fruit and some are fruitless. They grow best in full sun and with adequate moisture and fertilizer, they grow faster. Their roots are very shallow so don't plan to plant garden plants under.

The leaves of a red mulberry have a rough upper surface with a fuzzy underside. They are 2.25" to 4.75" broad, simple, broadly cordate, with a shallow notch at the base. Mulberry can produce male and female flowers on the same plant (monoecious plant) or on separate trees (dioecious plant). Flowers are greenish or creamy-colored, arranged in short catkins de-



signed for pollination by wind. It also produces purple cylindrical berries about 0.75" to 1.25" long that are sweet, juicy, and edible.

The heartwood is a golden brown, darkening to a medium/reddish brown with age. The sapwood is a pale yellowish white. The overall appearance is very similar to Osage Orange, though Mulberry tends to be significantly lighter.

FUN FACT: Fruit of mulberry is a rich source of vitamins C, A, E, & K and minerals such as potassium, iron, and magnesium.



Mulberry is associated with evil spirits in Germany due to ancient belief that the devil uses root of a mulberry tree to polish his boots.

MARK BAUMES' DVD PICKS FOR FEBRUARY

If this month's demonstration got you motivated, consider borrowing one of the following videos:

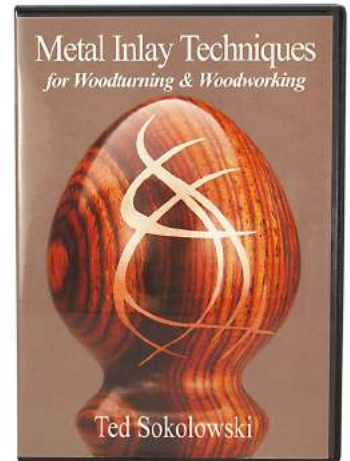
Woodturning Projects for Everyone Vol 1

Nick Cook is a full time production turner producing a wide variety of gift items. He is frequently published in *American Woodturner*. In this DVD, Nick shows how to make several different items including the French or tapered rolling pin. He reveals the secret to making perfect tapered ends and the ideal diameter. This fantastic French pin covers a large surface to let you roll out dough with minimal effort but flattening dough evenly, with the best control and consistency.

Turning honey dippers, baby rattles, spinning tops, lidded boxes, and tagua nuts are also covered. He turns most of the projects between centers making it easy for beginners that don't have a chuck. Everything on this DVD will help to build tool control and skills while practicing beads and coves.

You've seen pieces with inlay but aren't really sure how to try it yourself, then watch **Metal Inlay Techniques for Woodturning and Woodworking** by Ted Sokolowski.

This is a well edited DVD includes voice-over narration making it easy to hear and understand what is being demonstrated. Also, the demonstrated technique can be applied to stone inlay. The DVD covers all you need to know from getting started with your first inlay project to advanced carving and inlaying techniques. It also covers how to use blemished wood with natural voids and cracks to your advantage. Ted talks about cleaning up the crack, what bit to use when carving, the best glue for the job, how to troubleshoot a void in the inlay material, and how to determine when a crack is too big of a threat to the integrity of the wood and dangerous to work with. Ted also explores the idea of laser engraving and inlay.



JANUARY 2017 CNY WOODTURNERS MEETING

The January 10th meeting of the CNY Woodturners was opened by president **Doug North** a little late due slightly bad weather. Nonetheless, 30 members attended and we welcome four new members. New members are **Bob Carey** of Manlius, **John McCabe** of Cazenovia, **John McKee** of Auburn, and **Jim Ruddock** of Baldwinsville.

The meeting was held in the Community Room at Station One of the Belgium Cold Springs Fire Department.

After welcoming everyone, Doug asked **Mark Baumes** to present a short treasurers report. As usual, we have money!

Doug continued through our standard agenda.

He reminded everyone to support the vendors that contributed to our Holiday party.

Our February meeting will again be held at the firehouse. The topic is changed due to a scheduling issue. **Bob Ireland** will be the demonstrator. His topic will be *Husband Adjustment Tools*, aka rolling pins.

Doug reminded everyone that Barbara was looking for volunteers to help with the Cub Scout Pinewood Derby on Sunday, January 29th and the Girl Scout Pinewood Derby on Saturday, February 4th.

In other announcements:

The Finger Lakes Woodturners are hosting John Beaver the weekend of March 16th. See the newsletter or their website for more details. He is speaking at their meeting, the Rochester Woodworker's

Society meeting, and giving a demonstration and workshop.

Totally Turning which is an excellent training opportunity, is April 1-2 in Saratoga Springs. You really should consider attending!

The AAW national symposium is June 22-25 in Kansas City.

At this point, **Charlie LaPrease** stepped up to demonstrate turning a bowl. He was assisted by his mentee, **Mark Anastas**.

Following the demonstration, Doug reminded everyone to vote on this month's challenge of square bowls. Also, sign-up with Mark for the Saturday workshop which will be the 21st.

The Challenge for February will be BOWLS.

We took a break.

After the break, Doug led the group through *Show & Tell* (pages 5-6) and the *Monthly Challenge* (pages 3-4). The People's Choice in the Challenge was won by **Charlie LaPrease** while the Participant award was won by **Jim Yonkers**.

The meeting ended about 8:30pm and everyone helped clean up the room.

The next meeting is Tuesday, February 14th in the Community Room of Station One of the Belgium Cold Springs Fire Department, 7920 River Road, Baldwinsville.

Respectfully submitted,
Barbara Raymond-LaPrease, Secretary

The Monthly Challenge for February is Bowls

TOTALLY TURNING — APRIL 1-2 IN SARATOGA SPRINGS

What is this event called **Totally Turning**? It is two days of seminars with several nationally known turners, an opportunity to see world class turnings, an opportunity to purchase materials from vendors, and also an opportunity to see a variety of *flat board* projects.

The event is put on by members of the Adirondack Woodworkers Association and held in conjunction with 26th annual fine woodworking show—**Showcase** – put on by the Northeastern Woodworker Association (NWA).

The whole event is held at the Saratoga Springs City Center on **April 1 -2** from **10am to 5pm** daily. The featured demonstrators for 2017 include **Trent Bosch, Jimmy Clewes, David Ellsworth, Chris Pytlik,** and **Curt Theobald**.

Is there a cost to attend?

Yes, the 2 day Totally Turning registration is \$180 per person, pre-registered.

Can I enter my turned pieces in the Totally Turning Instant Gallery?

Yes, you can. You register your pieces upon arrival but before 6pm on Friday if you want the pieces judged. There is no limit on the number of items you can enter. You may deliver on Saturday or Sunday but then the pieces will not be judged.

What are the categories for Totally Turning?

They are not yet listed on the website <http://www.totallyturning.com>

What about hotels?

The Saratoga Hilton is attached to the City Center but you MUST make your reservations today. There is a discount rate. There is a Hampton Inn down the hill from the City Center. Check the event [website](#) for more information on discount codes.

- SEMINARS INCLUDE
- Cut Rim Open Bowl from a Half Log
 - Vessels & Surfaces
 - Turned Water Flask
 - Segmented Bowl Construction
 - UV Cured Resin Inlays
 - Natural Edged Goblet
 - 101 Things to Do with a Pen Blank
 - Twice Turned Bowl
 - Quick & Easy Spindle Projects

ASK MR. RENRUT

Dear Mr. Renrut,
I missed the last meeting but heard the Mike Malecki has a new method of for grinding his inlay material (like turquoise). Can you tell me about it?

Meeting Starved

Dear Meeting Starved,
Mike says that his new method is with an old thick plastic blender! What, is that safe? Mike wraps the blender with several layers of Duck tape for safety. Also, Mike says to take time to sharpen the blades before starting. Of course, wear gloves and safety glasses when doing this!
Mr. Renrut

Mr. Renrut will answer your questions. Please feel free to send your questions by the 15th of each month to the editor at secretary@cnywoodturners.org.

Dear Mr. Renrut,
My wife likes to show off my pieces so they are often placed on tables. When the sun shines in Central New York, it hits the pieces and the wood loses color. Is there anything I can add to the finish to avoid this?

Sun Afraid

Dear Sun Afraid,
Use sunscreen! What? The UV protection created by applying Bull Frog SPF 50 sunscreen before applying your finish will help. Let the sunscreen dry, wipe the excess off and then apply your favorite finish.

Mr. Renrut



Mr. Renrut will answer your questions! No question is stupid, just not asked!

Hey Mr. Renrut,
I hate spending money when I can make my own sanding disk holders. Can any directions?

Cheap

Dear Cheap,
What do you think about these? To make:



Use hardwood blocks 1 1/2 - 2 inch thick (cut into 3 1/2 inch squares) trim off corners.

Drill hole in center 1/4" minimum preferably size F or G drill bit. Bit could split block if forced into a 1/4" hole in a *hard* wood.

Insert 2" long driver bit with epoxy – driver bit from Harbor Freight (10 piece color coded set \$3.79). Use vise to squeeze bit in about 1 inch.



Turn hardwood into a cone shape about 1 3/4 diameter on the bit end and about 2 1/4 - 2 1/2 on the bottom. Square up top and bottom.

Cut foam into 3 1/2 inch squares. Use a garden knee pad or Neoprene, Mouse Pads, foam from fabric store – needs to be somewhat firm.

Glue Velcro to foam with 3M 77 spray adhesive or buy PSA Velcro from Klingspor that has adhesive already attached. (12 x 24 sheet #VC12040 \$14.95 Klingspor Woodworking Shop).

Place a large dollop of Shoe Goo on the center of foam – smear it around about the size of the hardwood cone bottom. (Option - smear it on the hardwood instead) Place hardwood cone on the center of the smeared Shoe Goo. If you have a circular weight (like a small faceplate or heavy washers) place it on the hardwood while the glue cures. You can find Shoe Goo at CVS drug store and a number of other stores. You can also use Kiwi Boot Repair or another like adhesive.

After everything has cured (24 hours) - place bit in a drill chuck mounted in the lathe. Use a skew to cut the bottom Velcro and foam to a 3 inch pad.

Angle the skew so the cut flows to the base of the hardwood. See photo above. If the skew cut is rough you can sand the foam.

Option – Use leather instead of Velcro if you are using PSA sanding disks.

The beauty of this set up is that you can make a set with a different grit on each and not have to change the pad until it wears out. You can also color code for easy identification of the different grits. Use a quick change drill chuck from Craft Supplies.

AAW Explore!

A Better Way to Search the AAW Library of 30 Years of the *American Woodturner Journal* plus other AAW publications!

It's what we asked for! If you are an AAW member, take some time to test it out

You MUST be a member to use. Why not join today!

www.woodturner.org

THE LAFAYETTE BIG PICTURE PROGRAM BY CHAD DAWSON

Three years ago I started working with my local high school to mentor a few students in a small woodworking shop one day per week. Having spent more than 40 years as a researcher and teacher, I thought that it would be fun and low key for an old retired guy. Wrong! It is fun but never low key when you are with power tools and three to four high energy teenagers! Visual safety checks around the workshop are as frequent as being a life guard in a busy pool. The woodshop classroom is a dedicated space that was set up with some new equipment; but it is mostly old, left behind machinery from the 1950's & 60's that lack modern safety features. Some students like to work on the Model 90 Powermatic lathe as it roars and rattles to life each day. I've watched as students have turned out furniture parts, stool legs, bowls, bracelets, drum sticks, tool handles, and jewelry stands. The old beast of a machine is intimidating to many students. Last fall, I applied to the American Association of Woodturners (AAW) for one of their Educational Opportunity Grants (EOG) in order to receive a midi-size lathe.

Members of CNY Woodturners have donated various turning tools, an older model chuck, and turning blanks to the program for the last three years. All of these items have been used and appreciated by the students who often comment aloud *what museum is this stuff from or I wonder who used this before.*

Students do more general woodworking than lathe work and have turned out small projects like lacrosse sticks and jewelry boxes as well as larger ones like book shelves, blanket chests, various parts for sports equipment like grinding rails for snowboarding tricks, and most recently a full size maple dining room table.

As background, the Lafayette Big Picture High School is an alternative high school serving 65 students (29 female and 36 male). It is located in



the Lafayette, NY Central School District which also serves children from the Onondaga Indian Reservation. Forty percent of the students are at a poverty level and receive free or reduced lunch programs.

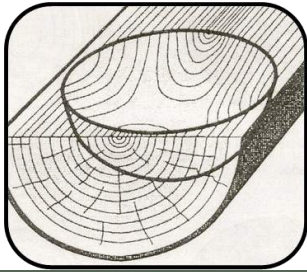
Students explore general woodworking and lathe turning supported by teachers and volunteer mentors with the goal of making *real world* projects that orient and train students for possible internships outside the school, college technology programs, and life-long learning. As a volunteer mentor, I help students safely learn some woodworking skills as well as support the four teachers in the program to supplement their woodworking training. Teachers must cover all subjects in the high school curriculum so the students only have brief periods of time in the woodshop. Early on I helped create and teach a half day woodshop safety course for teachers and students. It is now policy that students must go through an annual woodshop safety class to be allowed to work in the woodshop.

Woodworking has been a life long hobby that I like to share with others. When I am not working at the high school or on my own projects, a friend may be over to make canoe paddles or an entire canoe. Last summer our son Brian lived at home and worked his job remotely for over a month to build a 16 foot cedar strip canoe with me. We are waiting until the spring for the first voyage!



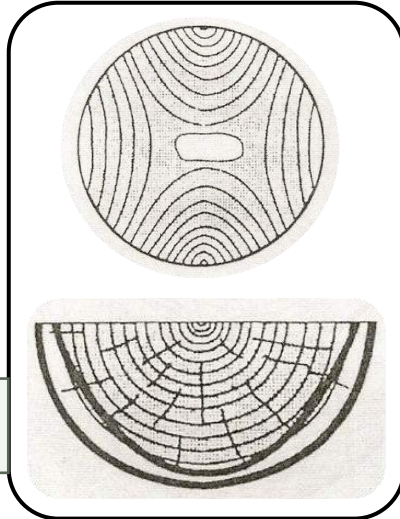
What museum is this stuff from?

CUTTING YOUR BLANK & GRAIN ORIENTATION

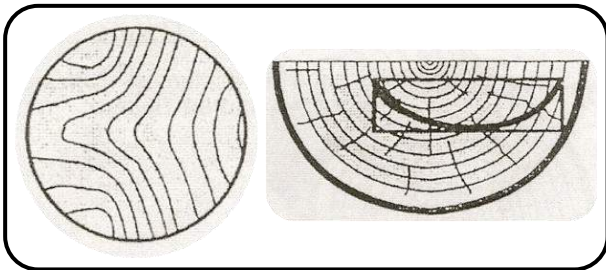


An open form turned with the pith at the rim will display a hyperbolic pattern inside.

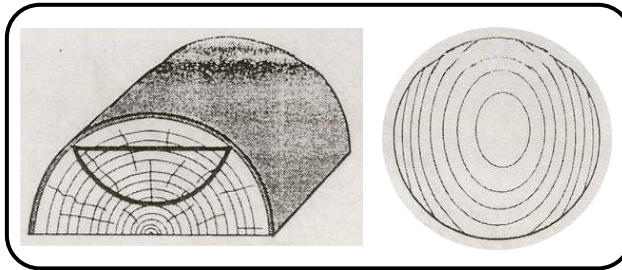
A bowl form in which the rim and bottom cut into the sapwood will show white patches at those points.



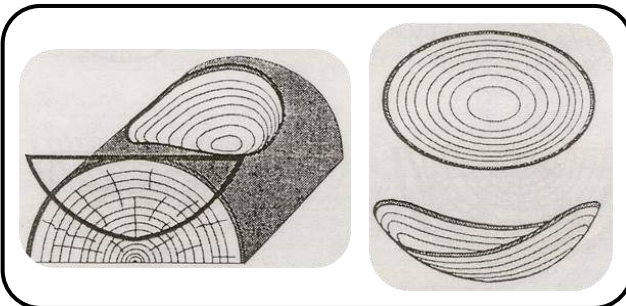
Every turner wants to make pieces that say wow! when someone looks at it. Achieving that wow factor is a combination of cutting your log properly and mounting your blank properly. There are many ways to mount and each produces a different look. At some point in time, a turner created drawings to show the best ways to cut and mount. No one is sure who created the drawings. Over the next few months, we will present the drawings for your reference. Enjoy!



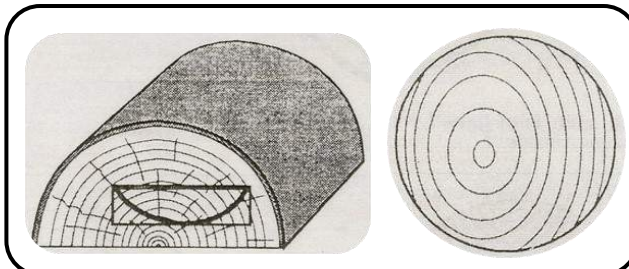
Boards in which the rings are not centered will have the pattern shift toward the pith side.



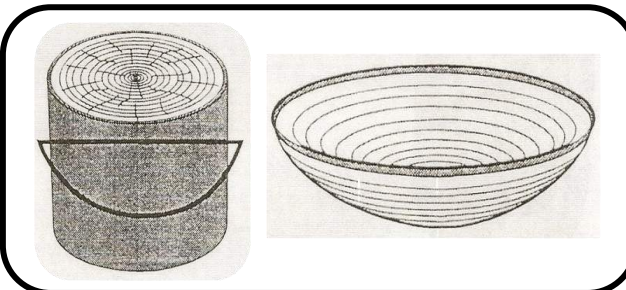
Open bowls turned with the pith at the bottom will display a concentric oval pattern. The outermost rings will be broken due to the flat rim being cut through them. If the edges cut into the sapwood, a sapwood streak will show at each edge.



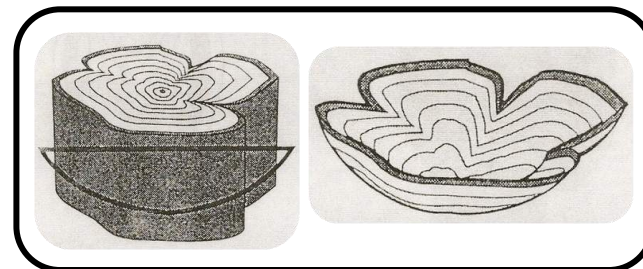
By extending the open form through the bark, an oval shaped bowl with an undulating natural rim will be produced. All the rings will be whole because none of them were cut off by the flat rim.



Bowls turned from boards where the pith is off centered will create an off centered pattern.



An open form turned from the whole log with the pith at the bottom will have a concentric circular pattern. If the form extends beyond the bark, there will be a natural edged bowl.



If the log is convoluted, the bowl form will have a scalloped edge

A "SOUND" IDEA
BY Bob Heltman, CMW, AAW

God Bless the Irish, and especially the March 2008 *Journal of the Irish Woodturners' Guild*, and even more to the point the work and article "Sounding Bowls" by Tobias Kaye. Tobias has been putting phosphor bronze guitar strings across wood bowls, making them into a sort of musical instrument, for over 20 years. Actually, his bowls have been bought on 4 continents and used in hospitals, clinics, care homes, special education settings, and for private meditation. Plucking sounds warm the heart! See his website: www.sounding-bowls.com

I got so excited I just had to try making one. Since my musical talent approaches zero, I visited my local Tempo music store, described my general plan, and bought 3 different strings. They gave me two violin tuning pegs, but I planned to make my own. It also struck me that using pegs is a bit ancient and maybe there was another way. Next I visited my Hobby House store, figuring that some of the small rigging devices used in model airplanes might work. As you can see from the picture below, Photo 1, this amounted to quite an assortment of wiring, small (2-56) nuts and bolts, threaded couplers, blind nuts, swivels, rods, tubes, etc. The kit on the left was mine.



Photo 1. Assortment of things needed to convert the bowl into a sounding bowl.

Back in my shop/studio I found a damaged walnut bowl about 7" dia. x 3" deep, and finished it with a thin spray of lacquer. Next I turned 2 pegs out of purpleheart. At the one end, with grain running in the direction of the strings, I drilled small holes just below the rim through which the strings would be threaded. Tobias uses copper tubing to line these holes, saying it gives a brighter tone

and stops the strings from cutting into the wood. The first string went in the center; one end of each string comes with a stop-ball to hold it in place.

Tobias holds the ends in place with small turned wooden pegs like on an old fashioned Spanish guitar, after first removing the stop ball, purely for an improved appearance. I used a blind nut in a hole opposite and turned in a long screw. Clipping the string to length I crimped its cut end into a small electrical connector, turned up the end and placed it behind a nut at the screws end. With heart pounding I slowly tightened the screw, using pliers to keep the nut and connector in place, and plucked the string until it was tight and produced a pleasant sound. IT WORKED and the bowl resonated wonderfully. (A pretty knob could be turned and glued over the screw.) This method worked like a charm, kept its tune, and was easy to adjust. It could be quite well hidden under a recessed rim.



Photo 2. The author's Sounding Bowl with three strings.

Tobias tells me it would sound even better if I perfected the spiral section curve that he uses to give the richest resonance. His kit contains instructions on shaping this curve. You might invent other methods for holding and tuning strings. Tobias uses specially made stainless steel threaded pins like you might find on a dulcimer, but with knurled tops for wooden thumb grips rather than

Sounding Bowls by Tobias Kaye
from his website



Editor's Note: More Woodturning Magazine has a program for Woodturning Club Newsletters whereby they provide articles to be included in newsletters. This is the current article provided. Check out the website at www.morewoodturningmagazine

A "SOUND IDEA", page 2

key turned square heads. Again, he says that this is a visual issue, feeling that his pieces should look as beautiful as they sound. (These special pins are available from Tobias as part of a kit that includes step-by-step instructions and the fine copper tubing mentioned above.)

On thin walled bowls, threaded couplers or rigging couplers soldered to the string wire, etc. might work too. BUT, be careful as "too thin" could mean breaking the bowl as strings are tightened. You can Google "violin making" and the like for more ideas.

While a violin peg has a 2 degree taper, I simply drilled the peg holes and twisted the rotating drill to make a tapered hole fitting my pegs. In these cases the strings ran over the bowl's rim into small holes in the pegs. Again, tightening and plucking gave me 3 different and pleasing notes. They do calm the soul and relax a person!

Visit Tobias' websites for more information on copyrights, to contact him for a kit, etc. You can make a better sounding bowl than this first fast try of mine! Have fun and improve your meditating. (It is OK to make a bowl for yourself, but not to sell. Give credit to Tobias Kaye and send commercial business his way like a good sport.)

With permission of Tobias Kaye, the World Master of Sounding Bowls, right are photos of some of his remarkable pieces of work with captions supplied by Tobias.

It is fitting to close with the following feedback from just one of Tobias' many purchaser/users:

"The (multiply handicapped) children I work with can respond to the Sounding Bowl and even initiate musical sounds in a way that is impossible with nearly any other instrument. When I first got the Sounding Bowl one of the boys who had not responded to anything else before spent the entire session touching, feeling then playing the Sounding Bowl." - Julie H. music therapist, Warwickshire. Using a 12 string cross strung style. - Julie H. music therapist, Warwickshire. Using a 12 string cross strung style.



Photo 3. This Holly Sounding Bowl, about 10" diameter by maybe 4.1/2" has red and green pegs to reflect the leaf and berry color of the tree. A wider fan would have given a better tuning but the shape arising as the wet wood dried is very pleasing to me, Tobias Kaye.



Photo 4. Wild grain gives a better resonance as well as better looks. This one in Ash shows the carved underside that is randomly rippled by hand leaving five little feet. 9"x2"



Photo 5. The strings pass over the wall at one end only in the simpler models. The steel tuning pins have maple thumb heads fitted shaped and stained so that the tuning system is part of the overall sculpture of the piece.



Photo 6. Hard maples gives a good tone this rippled one (Acer Pseudo Platanus) is about 13" across by 2.3/8ths deep. The seven strings are tuned to a pentatonic scale and go through the wall in copper tubes at both ends.

SHAVINGS & SCRAPS

Club Video Rentals

The club maintains a library of various videos in DVD format for rental by members. The cost is \$3 per month. If you miss a month to return a video, you must pay \$3 additional for each month over the initial month. We urge you to try to return on time as many others have interest in the videos as well. If you have suggestions of videos to be added to the collection, please let **Phyllis Radford** know. Donations are always welcome and if you know of DVDs that should be added to the collection, please give Phyllis the information—name, instructor, where to purchase, cost, etc.

Club Sandpaper Sales

The club purchases Carborundum sandpaper in bulk for resale to members and guests at meetings. Ten grits of sheet sandpaper are available at **\$0.75** per sheet – 80, 100, 120, 180, 240, 320, 400, 600, 800, and 1000. Sanding pads of 5 different grits – medium (120-180), fine (320-400), superfine (500-600), ultrafine (800-1000), & microfine (1200-1500) are also available at **\$1.50** per pad.

Club Tool Loan Program

The club owns 10 lathes, 5 sets of basic tools, 2 face masks, 2 chuck sets, 5 pen mandrels, and several other miscellaneous tools. Members may borrow equipment if they have a need. Tool loans must be limited to a **maximum of 2 months** and tools must be returned where loaned from, not handed off at meetings. The Board recognizes that tools are often loaned because beginners need to figure out what to purchase and we encourage you to borrow the club tools as a way to determine what you like.

AAW Offers Guest Membership!

The American Association of Woodturners (AAW) now offers a 60 day *Guest* membership program! You must setup an account but through it will you be able to review what the AAW has to offer. You will not have access to everything but you will have access to enough to learn about the vast array of resources available from AAW! Check it out by clicking [here](#).

Club Discount Programs

Several different vendors offer discounts for members of local woodturning clubs and some if you are a member of the American Association of Woodturners (AAW). Currently, we know of the following discounts:

Carter & Son Toolworks—10% discount on their variety of premium quality interchangeable woodturning tools. Use code **club10** at checkout. Orders can be placed by phone at **(206) 878-7672** or from their internet page at www.carterandsontoolworks.com. When ordering by phone, mention the 10% *Club Discount*.

Hartville Tools—A discount of 15% for members unless the items is on sale or is on clearance and the prices is better. Orders can be placed by phone at **800-345-2396** or from their internet page at www.hartvilletool.com. When ordering by phone, identify yourself as a *Club Discount Program Member*. When checking out via the internet, type *Club Discount Program Member* in the Checkout Notes.

Klingspor—A discount of 10% off all non-powered merchandise in the catalog. Call (800) 228-0000 and identify yourself as a member of the *CNY Woodturners*. Check their website www.woodworkingshop.com for product info.

Rockler—Buffalo Store—A discount of 10% for members unless the item is on sale, a power tool, Leigh jig, CNC, Festool, or gift card. Must show name badge.

Do you know of a company that offers discounts to woodturning club members? Please notify [Larry Prunotto](#), our Vendor Relations chair. Check back regularly for new deals!

Anchor Seal Available Again!

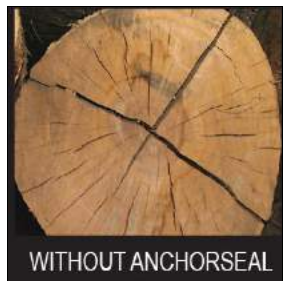
Anchor seal is used to seal the end grain of green wood to encourage slower drying and thus less cracking. The club purchased another 55 gallon drum of anchor seal and is dividing it into gallons and sold at meetings. The jugs are sold for \$10 each at Charlie's sale table during most meetings.

CLEAN GALLON WASHER SOLVENT JUGS NEEDED for anchor seal—Not flimsy milk jugs. Give to Jim Yonkers at meetings.

Know of a Vendor Discount Program? Tell someone so it makes it in the newsletter!



WITH ANCHORSEAL



WITHOUT ANCHORSEAL

SHAVINGS & SCRAPS

WHY SHOULD I JOIN THE AAW?

You enjoy woodturning and want more. Your club, the Central New York Woodturners is chapter of the American Association of Woodturners—AAW. What does that mean for you as a member of our club?

The club officers have access to a variety of resources from the AAW to help manage the club, including a negotiated reduced price for our club liability insurance.

However, those resources are restricted unless you are a member of AAW. For \$60 a year (\$50 if you don't want a physical journal), you can join the AAW in addition to your membership with the Central New York Woodturners.

What do you get for that amount? First, you get the *American Woodturner* journal six times a year. The journal has always been a wonderful resource for woodturners. And, if you are an AAW member, you get FULL access to all 30 years of the journal. While the index is not as good as it could be, just being able to look for and secure articles on a particular topic easily is a blessing. When was the last time you tried to get the same information at a library?

So is that it? **NO!** You also have access to a new publication—*Woodturning FUNdamentals!* Started in late 2012, our club has contributed several articles to this bi-monthly online only publication which contains some great articles, projects, and other information that is valuable for every woodturner!

For example, the January 2017 issue of *Woodturning FUNdamentals* contains project information for making stick pens, dog dishes, a tear-drop clock, and “little critters”. It also contains articles on a simple buffing roller and making better curves on your spindle turning. And there is much more!

The February issue of the *American Woodturner* contains feature articles on the fundamentals of spindle turning, a bottle opener, pen finishing, turning a mallet, adding a metal accent ring, turning a half moon purse, multi-axis turning, and much more!

As you can see, each publication contains practical information for the woodturner!

Is that all I get for \$60 a year? **NO!** Here is a short list of what else you get:

- ✦ Several mini-woodturning foundation books, including:
 - ✓ *The Nitty Gritty of Sanding*
 - ✓ *Got Wood? Now What?*
 - ✓ *Safety Guidebook for Woodturners*
 - ✓ *Safety for Woodturners*
 - ✓ *Turners are TOPS*
 - ✓ *Sharpening Woodturning Tools*
 - ✓ *Setting Up Your Woodturning Workstation*
- ✦ Several mentoring resources
- ✦ Access to *AAW Video Source*—a searchable database of pre-screened videos
- ✦ Access to the *AAW Forum*—a way to interact with your fellow woodturners worldwide

If you are a teacher or you mentor a new turner, there are several resources available that can help you in working with your student including lesson plans!

Coming Soon:

- ✓ AAW Directory of Learning Opportunities
- ✓ AAW Personal Learning Path

TRY THE FREE 60 DAY GUEST MEMBERSHIP

**Kick the Tires—See What There Is!
AND MUCH MORE! Join Today!**

You can join right online!

**Don't forget to indicate you are a
member of our group when you setup**

**Not an AAW
member? Why
not? There are
so many great
resources
available from
the Association!**

AAW Explore!

A Better Way to Search the AAW Library of 30 Years of the *American Woodturner Journal* plus other AAW publications!

It's what we asked for! If you are an AAW member, take some time to test it out

You **MUST** be a member to use. Why not join today!

www.woodturner.org

SHAVINGS & SCRAPS

Sharpening Services

One of the most asked questions is *where can I get table saw blades and other tools sharpened*. The Sharpening Shed in Cicero closed and the person who purchased the tools hasn't really started up the business.

We Know of 2 Options:

Paul E. Hart runs a service at 7902 Kirkville Rd, Kirkville, NY 13082. The phone number is (315) 656-2899. Phyllis noted that her father has previously used the service. The prices depend upon the number of teeth and size of blades. He also sharpens hand saw and replaced tips on saws. The flyer she provided has the following statement: "All saws on being received will be cleaned, checked for run out, minor retension (no charge), sharpened, polished, and dipped in plastic to protect the tips and prevent rust." If you use the service, please report back.

The second is an old friend – **Gordon Scholfield**. He is still doing sharpening out of the Tweeter Feeders store which is located on the east side of Route 57 just a half mile north of Route 31. The store is at the end of a group of buildings. The Premo sheds business is across the street. His prices are reasonable (per Charlie). If you use his services, let me know. There is a price list in the store at the service desk.

Thermal Finger Covers

Are you doing some woodburning and find your fingers getting hot? There's a new product available from Treeline – *Thermal Finger Covers*. A 3 pack of the covers costs just \$4.99! The covers are made of heat resistant silicone and designed to be resistant to 400 degrees. They fit almost any size finger and easy to put on. They come in various colors. Treeline is at www.treelineusa.com or 800-598-2743



Sanding Pads

At the October meeting, Mel Taber talked about and showed some pads for sanding that looked like mesh. They are called **MirlonTotal**, nicknamed *Scuff Pad*, and are manufactured by Mirka. The pads come in three grits that are useful for woodturners – 360, 1500, and 2000. Each pad is 6" by 9". They are packaged in boxes of 20. Mel purchases his through Beaver Industrial Supply (beavertools.com) [800-365-6677].

- Red → "Very Fine"
- Grey → "Ultra Fine"
- Beige → "Micro Fine"

The cost per box is \$16-\$18 per box.



Local Source for All Sorts of Filters

Jerry Holbrook found a great local source for filters of all different sizes. He needed a 24" x 24" x 4" 30/30 filter for the Oneida Air dust collector. He found them at a firm called EDCO. Well, **Robert Love** reports that they are now called **Camfil USA** (<http://www.camfil.us>) and they have moved to 6600 Deere Road, Syracuse. The phone number is (315) 468-3849. Robert reports the prices are still great!

Mike Shuron, an SWWA member who relocated to Kentucky, says that he is buying the filters for his Jet and Delta air cleaners on the internet via FilterBuy (<https://filterbuy.com>). He states that first time users receive \$10 off and the prices are better than Rockler or Woodcraft.

Did you find a great product that should be shared? Tell Barbara so it makes it in the newsletter!



REGIONAL MEETINGS & CONFERENCES

Finger Lakes Woodturners

Finger Lakes Woodturners (FLWT) generally hold their meetings on the third Thursday of each month from September to May. Their next meeting is Thursday, February 16th with a talk/demonstration by **Mark Mazzo** about *Embellishment Techniques*

Their second national turner will be [John Beaver](#) on the weekend of March 16th.

Check out their website for directions to the meeting at the Isaac Heating & Air Conditioning Training Center, 50 Holleder Parkway in Rochester.

<http://www.fingerlakeswoodturners.com>

Regional Symposiums

Several woodturning clubs hold symposiums on a regular basis. The closest, *Totally Turning*, will return to Saratoga Springs in 2017 on **April 1-2**. Obviously, the biggest symposium is the AAW International Symposium; but there are others you can also plan to attend. Here are a few within a day's drive:

March 10-12 – *Southern States Woodturning Symposium* at the Clarence Brown Conference Center in Cartersville, GA. Featured demonstrators will be **Stuart Moritmer, Dixie Biggs, Dennis Pallus** and Windsor chair maker, **Greg Pennington**. Also demonstrating are **Peggy Schmid, Robert Lyon, Steve Cook, and Nick Cook**.

April 1-2 – Northeastern Woodworkers Association present the 27th *Annual Showcase & Totally Turning* at the Saratoga City Center in Saratoga Springs. Featured demonstrators will include **Jimmy Clewes, Curt Theobald, David Ellsworth, Trent Bosch, Chris Pytlik, Kurt Hertzog, Rick Angus, Lynda Zibbideo, Willie Simmons, and Ralph Mosher**. [More details page 16!]

September 15-17—*Turning Southern Style XXI* presented by the Georgia Association of Woodturners at the Northwest Georgia Trade and Convention Center in Dalton, GA. More details to come.

October 13-15—Ohio Valley Woodturners Guild present *Turning 2017* at the Higher Ground Conference Center in West Harrison, IN. Featured demonstrators are **Jimmy Clewes, Nick Cook, Ashley Harwood, Avelino Samuel, and Keith Gotschall**.

October 28-29—*Mid Atlantic Woodturning Symposium* at the Lancaster, PA Marriott. Plan now to attend. They pulled off an EXCELLENT event in 2016. The demonstrators are not yet identified but certainly they will come in with another excellent group! Details are not yet published but watch the website [here](#) or the Facebook page [here](#).

Annual AAW Symposium

Start planning to attend the 31st annual AAW Symposium. It will be held in Kansas City, Missouri at the Kansas City Convention Center with the host hotel as the Kansas City Marriott on **June 22nd thru June 25th**. Get the latest information from the [AAW website](#). If you are planning for the future, the 2018 Symposium will be in Portland, Oregon.

The symposium features 3 days of woodturning demonstrations and meetings led by over 70 talented experts. Multiple rotations are held simultaneously so attendees have many types and styles of woodturning demonstrations available throughout each day. There is an instant gallery that you can enter with up to 3 of your own pieces. There is also the largest woodturning tradeshow anywhere, including tool and lathe manufacturers, vendors of wood and other materials, and suppliers related to woodturning.

Going to Totally Turning? Make your hotel reservation now for a room at the adjacent hotel, the Saratoga Hilton. Use the link on the following webpage to get the discounted rate—
www.totallyturning.com/information.htm



CNY WOODTURNERS MEMBERSHIP

Membership in the Central New York Woodturners LLC is open to anyone interested in woodturning. The cost for a first time individual member is \$30 which includes the cost of a badge. **Renewals are \$25 per year** and due by March 1st. **Family memberships are \$35 per year** plus \$5 per badge for each family member needing a badge. Membership applications are available on the club website –



www.cnywoodturners.org. The club leadership, with contact information, is listed right as a reference. Feel free to contact any club leader to ask questions, suggest programs, or deal with issues. You need to have an active email address if you are a member as the leadership sends many member communications via email as well as this newsletter. To read the newsletter you need to have a PDF reader product such as [Adobe Acrobat Reader](#) installed on your computer. Adobe Reader is free. Due to its size, we prefer not to send newsletters by mail. However, a limited number of hard copy newsletters are sent to members without email.

The CNY Woodturners group was formed in September of 1998. It was accepted as the 121st chapter of the **American Association of Woodturners (AAW)** in November 1998. We encourage you to join AAW as it is an excellent organization with great resources as a member. Membership in AAW costs either \$43 for an online only or \$53 for a paper-based membership. Each member-

ship includes the 6 issues of the journal, *American Woodturner*, with the online membership receiving it only online. You also have access to a large collection of online resources such as the publication *AAW Fundamentals* which is published on the off months from the journal.



AAW is an international organization of over 14,000 members of varying woodturning skills. In addition to receiving current issues of the journal, *American Woodturner*, membership also provides online access to all past issues of the Journal from 1986 forward. Access to a Resource Directory is also available only to members. Members of AAW also receive savings of up to 50% on AAW merchandise, including project books, DVDs, logo apparel, and more. Members can apply for an educational opportunity grant whereby an individual can receive compensation toward woodturning education for expenses such as tuition, registration, travel, lodging, meals, etc. They can also apply for professional outreach program fellowship grants to encourage creative growth or research, or to provide inspiration for new directions in turned wood art. The AAW Forum is also available to members as are other restricted articles and resources on the [AAW website](#). Members receive a discount on registration for the annual Symposium which is in Kansas City, MO in 2017. Check out the AAW website – www.woodturner.org.

For membership applications, directions, and additional information on club events, checkout the Club website, www.cnywoodturners.org.
CNY Woodturners LLC, P O Box 2280, Liverpool, NY 13089-2280

Crossword Puzzle Answers

Across: (7) AAW; (8) StebCenter; (9) Preserve; (10) Calipers; (11) SoundInBowl
Down: (1) Bowl Gouge; (2) Toothpaste; (3) WormDrive; (4) SquareBowl; (5) SaucerkackerShell; (6) TotallyTurning
 (6) Pith

CNY WOODTURNERS LEADERSHIP

OFFICERS

- Doug North, *President*
 (315) 673-3611
president@cnywoodturners.org
- Chad Dawson, *Vice-President*
 (315) 480-4319
vpresident@cnywoodturners.org
- Barbara Raymond-LaPrease, *Secretary*
 (315) 638-1217
secretary@cnywoodturners.org
- Mark Baumes, *Treasurer*
 (315) 730-9027
treasurer@cnywoodturners.org

MEMBERS-AT-LARGE

- Rod Castle (315) 638-2659
roderick.castle@verizon.net
- Bob Ireland (315) 402-2813
rireland@twcny.rr.com
- Mike Malecki (315) 569-0099
msquared16@aol.com
- John Mielcarski (315) 476-6571
slickrover@aol.com
- Larry Prunotto (315) 652-3605
larry0128@verizon.net
- Ed Siegel (845) 554-2473
egseigel@aol.com
- Mel Taber (315) 487-7855
mtaber3@gmail.com

COMMITTEES

- DEMONSTRATIONS**
- Heather Muckley (585) 739-7108
hmuckley@yahoo.com
- Robert Love (315) 297-4224
rclove@sbcglobal.net
- Greg Potter (315) 529-1536
gjpotter@twcny.rr.com
- EQUIPMENT**
- Charlie LaPrease (315) 720-7151
8acreswood@gmail.com

NEWSLETTER

Barbara Raymond-LaPrease
barbchas@twcny.rr.com

NEW YORK STATE FAIR

Ed Siegel

PHOTOGRAPHY

Heather Muckley

VENDOR RELATIONS

Larry Prunotto

VIDEO LIBRARY

Phyllis Radford (315) 452-1386
pkradford@hotmail.com

WEBMASTER

Chad Dawson

OUR 2017 MEETING SCHEDULE

Date	Topic	Demonstrator	Workshop Date/Location
January 10 th	Basic Bowl Turning	Charlie LaPrease	January 21 st / Eight Acres
February 14 th	Rolling Pins	Bob Ireland	February 25 th / Eight Acres
March 14 th	Live Edge Turnings	Terry Vermilyea	March 18 th / Eight Acres
April 12 th	Miniature Fruit Bowl	Dawn Petrie-George	April 15 th / Eight Acres
May 10 th	Lighthouse Ornament	Don Lum	May 13 th / Eight Acres
June 14 th	Turning a Lamp Base	Greg Potter	June 17 th / Eight Acres
July 12 th	Jigless Hollowing!	Dick Parker	July 15 th / Eight Acres
August 9 th	Marbling	Barbara Raymond-LaPrease	August 12 th / Eight Acres
August 25 th to September 4 th	Demonstrate at the New York State Fair	All Members!	Each day 10am to 8pm in the Witter Agricultural Museum!
September 13 th	Natural Edged Bowl	Mike Gridley	September 16 th / Eight Acres
October 11 th	Skew It!	Dick Hoblitzell	October 14 th / Eight Acres
November 15 th	TBD	Ed Siegel	November 18 th / Eight Acres
December 13 th	Holiday Gathering with Your Woodturning Friends!		None—Enjoy Your Holidays!

CLASSIFIEDS

Classifieds are welcome with the caveat that people notify the editor when entries are sold.



FOR SALE: Hawk Model 226VS 26" Scroll Saw with Foot Switch and Magnifying Light. \$1200.00 new and used very little. Make me an offer. Contact Mel Taber, 487-7855 or mtaber3@verizon.net

FOR SALE: General Model #15-155 MT 13" Horizontal Single Drum Thickness Sander With Mobile Base, 1 1/2 HP Main Motor [110 V, 13 A], 1/5 HP Conveyor Motor, Max Sanding Thickness 3 3/4", Min Sanding Thickness 1/4", Min Sanding Length 5", Drum Diameter 5". Perfect shape. Partial roll of sandpaper included. \$900.00 or offer. Mel Taber, 487-7855 or mtaber3@verizon.net



FOR SALE: Large selection of wood including >60bd feet of mahogany plus small selection of maple walnut, cherry & poplar. Prices negotiable. Contact Dave Mirizio at 263-2341.

FOR SALE: Craftsman 8 inch Bench Grinder with 5/8 arbor, 1 hp motor. \$70. Contact Bob Silberman @ (607) 257-0939 or rsilberman@twcny.rr.com.

FOR SALE: Jet 1014 Mini Lathe & stand. Barely used. \$425. Contact Bob Ireland at rireland@twcny.rr.com if interested or if you have questions.

FOR SALE: Jet Model 1442 Lathe. Lightly used over 10 years. \$1000 or best offer. Contact Kris Dulmer at (315) 559-7360 or kdulmer@hotmail.com

FOR SALE: Earlex 5500 HVLP Spray Unit includes extra needle, cleaning kit, small tool box for parts, 1 gal & 1 quart Target Water Base Lacquer, 1 gal Target Water Base Sanding Sealer. **NOW \$240.** All new & purchased for >\$400. Contact Bob Henry at (585) 323-1166 or bbhny@yahoo.com

FOR SALE: Gemini Wood Carver/Duplicator

No Reasonable Offer Refused vvv The machine is complete and has the decoy/gunstock option included. Ready to put on your bench and have running in an hour or less. I will assist you in set up if you want. Made in USA in Elbridge, NY. Contact Mel Taber, (315) 487-7855 or mtaber3@verizon.net

FOR SALE: Rockwell/Delta Lathe on a factory metal stand. Very good shape; no issues. 11" over bed; 14" over cut out; 37.5 between drive arbor & tailstock; 1/2 HP; multiple speeds with variable speed pulleys on headstock & additional on transfer shaft. \$250. Also Craftsman lathe on factory metal stand. \$80 as is. Contact Larry Hartle at (315) 406-7079 or jawk50@aol.com

FOR SALE: Used bench vises. Good quality, commercial grade. Price \$50 to \$75 each. For more info, email Bud Millis at emillis@twcny.rr.com or call (315) 297-7525.

FOR SALE: LUMBER – Kiln & Air Dried Hardwoods (PA cherry, chestnut, maple, white oak, butternut, etc.) and some softwoods available. Also Black Walnut and English Walnut slabs available. For more details, email Bud Millis at emillis@twcny.rr.com or call (315) 297-7525.

FOR SALE: Craftsman COPY CRAFTER. \$150. Contact Fred Brockway at (315) 521-5873.

Memphis Hardwood Lumber – Situated on the bank of the Old Erie Canal, over 40 species of domestic and exotic hardwoods – including turning stock. Only local supplier for Baltic birch plywood in different sizes – 1/8", 1/4", 1/2", etc. For more information, see website www.memphishardwoodlumber.com. Custom engraving also available. Located at **6535 Church St, Memphis, NY**. Open M-F 8am–4pm. Call for Saturday appointments. (315) 689-3949