



UPCOMING MEETINGS & EVENTS

March 14, 2017 — 6:15pm

**Monthly Meeting — Live
Edge Turning — Terry
Vermilyea**

Challenge — Rolling Pin

**Held @ Belgium Cold Springs
Station 1 Community Room,
7920 River Rd, Baldwinsville**

March 18, 2017 — 9am

**Monthly Workshop — Live
Edge Turning**

**Held @ Eight Acres Event
Center, Baldwinsville**

Details on page 14

April 12, 2017 — 6:15pm

**Monthly Meeting —
Miniature Fruit Bowl — Dawn
Petrie**

**Challenge — Live Edge
Turning**

**Held @ Belgium Cold Springs
Station 1 Community Room,
7920 River Rd, Baldwinsville**

April 15, 2017 — 9am

**Monthly Workshop —
Miniature Fruit Bowls**

**Held @ Eight Acres Event
Center, Baldwinsville**

INSIDE THIS ISSUE:

- ◆ AAW Spring Sale! — p. 24
- ◆ Making Great Jigs for the Lathe — p. 18
- ◆ Mr. Renrut — p. 19
- ◆ Cutting Your Blank — p. 20
- ◆ Wood Education— Bloodwood — p. 17
- ◆ February Demo—Rolling Pins — pp. 10-11
- ◆ 2017 Demonstration Schedule — p. 28
- ◆ March Crossword Puzzle — p. 16

OUR MARCH MEETING

Members and guests of the Central New York Woodturners will gather on Tuesday, March 14th for their monthly meeting which starts at 6:15pm. The meeting will be held in the **Community Room at Station 1 of the Belgium Cold Springs Fire Department at 7920 River Road, Baldwinsville** [directions on page 2].

Our topic for March is **Live Edge Turning**. Our presenter will be **Terry Vermilyea**. Terry indicates that he will be showing us how to use branches to create small items that include the bark as part of the appeal. He will be showing us both bottle stoppers and bird houses as examples but the focus for this turning demonstration is to keep as much bark as possible on your turning to create a unique effect. So, the Challenge for April will be just that—**including bark into your final decorative turnings with the bark visible to the eye!** Come to the meeting and learn some new ways to use those branches you've pushed aside for years!

In addition to Terry's demonstration, we will have our usual *Show & Tell* session and our *Monthly Challenge of Rolling Pins* based on **Bob Ireland's** February demonstration. Yes, you will



also be able to rent videos and purchase sandpaper.

Plan on signing up for the workshop at the meeting also. The workshop is the Saturday following the meeting, March 18th.

Please plan on attending, bringing your recently completed items for the *Show & Tell* plus your entry for the *Monthly Challenge*. See you all on the 14th at the **firehouse!**

Don't Forget Your Rolling Pin for the Monthly Challenge!



THE SUPER CHALLENGE!

The club's first ever *Super Challenge* was a resounding success! As we begin 2017, the Challenge continues!

Members are again encouraged to create one cohesive piece that includes at least **six (6)** topics from the 2017 demonstrations. Also, for anyone who did not enter the 2016 Challenge but enters in 2017, you will receive an extra point in the vote tallying!

WHAT WILL YOU ENTER IN 2017?

MEETING DAY CHANGES

Our meetings have moved (for now) to the Belgium Cold Springs Fire Department, Station 1. However, Fire Department events come first and there is a class using the facility on Tuesdays through much of 2017. Therefore, starting in April, our meetings will move to the second Wednesday.

We know that means some may not make the meetings but we also know that others can now make the meetings.

Mark your calendars appropriately!

NOTES FROM OUR PRESIDENT

As we say good bye to February, I guess there is light at the end of the winter tunnel so we can say we survived another upstate New York winter! I would have to say that this year *Mother Nature* was not as mean as she could be, but there is still some time so let's keep our finger crossed that spring comes early and brings with it a nice summer.

Soon it will be time to get the plant lights out and share the workshop with the garden hobby. We like to start our tomatoes and some of the flowering plants inside so we get a jump on summer. Every year I sacrifice a corner of the shop to set up some seed starting shelves.

Don't forget as we move into spring that March 12th is the start of *Daylight Saving Time* (Spring Ahead – Fall Back)! Don't forget, when changing your clocks, it is also a good time to check smoke detectors and change the battery!

While we have all of this going on, my younger daughter is getting ready for a trip to Ireland to visit her college roommate who has been living in Galway, Ireland for the past 2 years. Her roommate has been working in a coffee shop making enough money to pay her expenses while she is touring the country. *Oh to be young again!* Reality hits in July as her Visa runs out and she has to move back to the states. Oh, did I mention she lives in Hawaii (home of Pearl Harbor, Sunshine, Pineapples and Koa Wood)?

We are only a few weeks away from NWA's Annual Woodworkers Showcase, which includes Totally Turning. Even if you are not able to spend the weekend, you owe it to yourself to at least take a day to attend just the Showcase. They will have a gallery display with several hundred pieces of work on display – everything from turned pens to large pieces of furniture.

The gallery is a great place to get ideas on new projects and the vendor display gives people a chance to bring home some new tools or supplies. (*Details on page 21*)

Symposiums are a great way to learn and I am taking one in during each season this year. In the spring (April) it is Totally Turning in Saratoga Springs, in summer (June) is the national symposium in Kansas City, and in fall (October) is the Mid Atlantic symposium in Lancaster, PA! In its second year, I know the Mid Atlantic event will be another great one. They've announced the speakers and will begin taking registrations in April. I hope as many members as possible will plan on attending one or more of these 3 events. I know I always come away with new ideas or better ways to do things!

I am still looking for a member that would be willing to assist by storing and transporting the video equipment and act as a back-up to Bruce Swift who normally handles the equipment. Please consider volunteering.

As I close, I would like to remind you that we as a club will have a few bumps in the road going forward but we look to keep the meetings positive and concentrate on our hobby of turning. We have a number of very interesting demonstrators lined up in the near future, including this month when Terry Vermilyea will teach us a technique for turning a live edge piece. We continue to see new people joining the club and record numbers of members participating in not only *Show & Tell* but also the *Monthly Challenge* so the future of the club looks brighter than ever. I look forward to seeing everyone on the 14th and as always – stay sharp and keep turning safely.

Doug North



Expand Your Learning This Year—Attend a Symposium!

DIRECTIONS TO THE BELGIUM COLD SPRINGS FIRE DEPT — STATION ONE COMMUNITY ROOM

Everyone comes from different directions. For your GPS, the street address is: 7920 River Road, Baldwinsville. New York 13027

General Instructions: Station 1 is north of John Glenn Blvd., east of Route 370 and south of Route 31 at the intersection of River Road, Hicks Road and Patchett Road. Everyone comes a different direction, whether it is thru Liverpool on Rt 370 or via Rt 690 (get off at John Glenn Blvd.).

DO NOT BLOCK STATION DOORS WHEN PARKING!

From John Glenn Blvd., take Route 370/Cold Springs Road north (there is a traffic light at the corner of John Glenn & Rt 370). Take your first right at Cold Springs (past the Elks) onto River Road. Drive 2 miles and firehouse will be on right. Park on the north side in the lot away from

the overhead doors. If you miss the right onto River Road, drive 2.2 miles north to Hicks Road. Take Hicks to the 5 way intersection, turn right onto River Road and then left into the firehouse parking lot.

From Fayetteville, Manlius, etc. Take Rt. 481 north to the Route 31 exit. Take a left onto Rt. 31. Drive approximately 3½ miles to River Road (it will be the 9th traffic light). Turn left on River Road and head south 2 miles to the 5-way intersection. Make a slight left to stay on River Road (after stopping for the 5 way stop sign). The fire station is just past this intersection on the left off River Road.

FEBRUARY 2017 MONTHLY CHALLENGE

The club holds a *Monthly Challenge* as part of its regular meeting. The Challenge is a way for all club members to have fun honing their turning skills using information and techniques learned during each monthly meeting's demonstration. Members are encouraged to bring an original piece they created **after the meeting** that fits the basic requirements of the Monthly Challenge and within the constraints announced by the President. Generally, the

Challenge for the next month is based on the previous month's meeting topic. For February the Challenge was to create a bowl using techniques learned in *Charlie LaPrease's* January demonstration. We had 22 people participate in the Challenge — one new to the Challenge. The People's Choice award was *Mel Taber*. The Participant award was given to *Bob Randall*.

February Awards

People's Choice
Mel Taber

Participant
Bob Randall

Congratulations!



Heather Muckley
"Cloud Bowl"
14" Birdseye Maple
Iridescent Paint, Lacquer, Sanding Sealer



Mel Taber
9.5" Tasmanian White Top Burl
Lacquer Finish



Chad Dawson
7.25" Quilted Big Leaf Maple
Walnut Oil w/Carnuba Wax



Bob Randall
10" & 11.75" Spalted Maple Bowls
Modern Masters Metal Effects
with Salad Bowl Finish



Matt Revenaugh
9" Maple Bowl
Odie's Oil

The Challenge for March is a Rolling Pin!!

Let's beat our record for entries.

We need 25!

And, let's be creative!

FEBRUARY 2017 MONTHLY CHALLENGE



Dave Grant
7.5" Ash & Black Walnut Bowl with Lacquer Finish (L)
6.75" Cherry & Black Walnut Bowl with Odie's Oil Finish (R)



Larry Prunotto
14.5" Box Elder ↑
9.25" Mid-Florida ←
Rosewood
Odie's Oil & Wax



Charlie LaPrease
6-8" Cherry and Horse Chestnut Bowls with Preserve Finish



Mike Gridley
9.5" Maple Bowl



Bob Ireland
18" Catalpa Bowl
Beeswax & Mineral Oil Finish

Jerry Holbrook
11" Maple Bowl with Poly Finish
10" Segmented Bowl of Tulip Poplar, Butternut, Black Walnut & Maple with Poly Finish



Bob Johnston
9" Purpleheart
Friction Polish Finish



FEBRUARY 2017 MONTHLY CHALLENGE



Greg Potter

5" Natural Edge Walnut Bowl
4.5" Black Walnut Bowl
10.5" Spalted Soft Maple Bowl
6" Flame Box Elder Bowl
Beeswax & Mineral Oil Finish



Doug North

7.5" Oak &
10.5" Oak Bowls



Jim Yonkers

7.5" Maple Bowl
Modern Masters Metallic
Faux Copper Finish



Gary Morison

7" Cherry Bowl w/Poly Finish



Phyllis Radford

5.5" Mystery Wood
Sanding Sealer / Watco / Wax

Ted Kleege

4.25" Cherry Bowl
5.25" Maple Bowl
Odie's Oil Finish



Jerry Laffer

4.25" Mystery Wood
Mahoney Oil Finish



Ed Siegel

6.25 Spalted Maple Bowl
Mineral Oil Finish

John McCabe

8.5" Cherry
Mineral Oil & Wax



FEBRUARY 2017 MONTHLY CHALLENGE



Robert Love
19.25" Birch Big-Ass Bowl
Sanding Sealer then General Arm-R-Seal



CHALLENGE PARTICIPANTS FOR 2017

Chad Dawson (1)	Dave Grant (2)	Mike Gridley (2)	Jerry Holbrook (1)
Bob Ireland (2)	Bob Johnston (1)	James Kent (1)	Ted Kleege (1)
Jerry Laffer (2)	Charlie LaPrease (2)	Robert Love (2)	Mike Malecki (1)
John McCabe (1)	Gary Morison (1)	Heather Muckley (1)	Doug North (1)
Greg Potter (1)	Larry Prunotto (2)	Phyllis Radford (1)	Bob Randall (1)
Matt Revenaugh (1)	Ed Siegel (2)	Bruce Swift (1)	Mel Taber (2)
Jim Yonkers (2)			

REWARDS: Based on voting by attendees, a People's Choice award is selected. A Participant award winner is selected from the remaining entries. Both receive special awards. All participants vie for year-end awards based on their year-long participation. Each month, the newsletter is updated to include the Challenge participants and the number of times they shared a piece. At the end of the year, a random drawing is held that includes a ticket for each participant, for each month they entered a Monthly Challenge.

NOTE: All Challenge pieces must be constructed as a result of the demo at the meeting; In other words, created from the date of the meeting to the date of the next meeting.

**WOODTURNING!
COME LEARN. LEAVE INSPIRED.**

Increase your woodturning skills and know-how better and faster.
Get new ideas that will recharge and motivate you.
Meet friendly turners from across the globe.

- For all skill levels
- 100+ demos and panel discussions
- Internationally known demonstrators
- Trade show with 100+ exhibitor booths
- Exhibitions and gallery with 1000+ works
- Auctions of turned art
- Charitable initiatives
- Networking opportunities

**AAW'S 31ST ANNUAL
INTERNATIONAL SYMPOSIUM**
June 22-25, 2017
Kansas City Convention Center
Kansas City, Missouri

Details and registration at tiny.cc/AAW2017KC, woodturner.org, or call 877-595-9094 (toll free)

**FEBRUARY 2017 SHOW & TELL
“LATE” ENTRIES FOR JANUARY MONTHLY CHALLENGE**

The weather made it difficult for some people to attend the January meeting. Several members had created square bowls and brought those to the February meeting. Here

are the bowls from the *Show & Tell* area that would have joined the 13 in January's *Monthly Challenge*.



Greg Potter
Cottonwood with Wipe on Poly
Hard Maple with Danish Oil



Matt Revenaugh
Cherry with Oil Finish



Jon Haney
Maple with Oil Finish



Tom Lawlor
Maple & Poplar Square Box
Waterlox & Wax Finish



Jerry Holbrook
Segmented Bowl of Tulip Poplar,
Butternut, Black Walnut & Maple with
Poly Finish

**The Monthly
Challenge Takes
What You
Learned at a
Meeting and
Puts it into
Practice**

FEBRUARY 2017 SHOW & TELL

Members create a wide variety of projects. Sharing those projects with others is a wonderful way to show members what you've completed lately as well as gain valuable feedback on your turning. We love seeing what you create. Remember that long explanations impact other participants' ability to talk about their projects.

When you bring something in for *Show & Tell*, please enter as much information as possible on the sign-in sheet so there is an accurate record of your project in the newsletter. If you want, bring a card with the information and leave it with the sign-in sheet. Please put your name on a card and place it with your entries to make it easier for the photographer.



Ian Potter
Pirate Ship from Santa
White Oak & Walnut



Heather Muckley
Spin Art Decorated Tops
Ash & Maple
Black Sol Stain &
Colored Lacquer



Bob Casey
Salt & Pepper
Shakers
Maple & Walnut
Poly Finish
Kit from Craft
Supplies
Shown w/bushings



Gary Morison
Turned Based for Small &
Large Domes
Mahogany & Maple
Poly Finish

Federico Meira
Tagua Nut Turnings from
Turners in the Andes
"Vegetable Ivory"



FEBRUARY 2017 SHOW & TELL



Bruce Meissner
Black Ash Burl Bracelet
CA Glue Finish
Gift for Granddaughter



Bob Ireland
Basswood Spindles
Will be split / 2 pieces with paper glue joint
Random Act of Kindness Program at Work



Mike Gridley
Walnut Bowl with CA Finish



Dave Grant
Cherry Burl Bowl with Odie's Oil
Buckthorn Weed Pot w/Odie's Oil
Tool Handles with Odie's Oil



Jerry Holbrook
Cherry & Spalted Maple
Segmented Bowl
Salad Bowl Finish
Used bandsaw to cut 2 stacked pieces then glued



Jim Yonkers
Handles for Shaving Brush & Pastry Brush
Components from www.goldenknib.com
Assembled with West System Epoxy

If you are developing new techniques for a turning, why not put together your technique into a meeting demo or even an article for the newsletter! You will learn even more!

FEBRUARY 2017 DEMONSTRATION HUSBAND ADJUSTMENT TOOLS* WITH BOB IRELAND [A.K.A. ROLLING PINS]

Members and guests of the Central New York Woodturners assembled on Tuesday, February 14th for their monthly meeting and demonstration by **Bob Ireland** on husband adjustment tools—a.k.a. rolling pins. As he started, Bob acknowledged each of the ladies in the room with a rose as they sacrificed a romantic Valentine's Day for the meeting.

Bob's approach to teaching varied between being serious and being a humorist – both were much appreciated by the audience. For example, after dispersing the roses, he stated that actually using a rolling pin as a husband adjustment tool would void the warranty on the craftsmanship and materials of the rolling pin. He then began his demonstration by talking about the types of rolling pins such as the traditional rolling pin with either fixed or revolving handles, small specialized rolling pins for pastries, and the French pastry rolling pin that has only a tapered barrel and no separate handles.



The dimensions suggested for a rolling pin included a barrel of approximately 1.75" to 2.5" in diameter and 10" to 12" in length. Handles on each end of the barrel measure between 3.5" and 4" in length. Handles can be fixed to the barrel by turning a single piece of wood into the barrel along with handles, or handles can be added to a barrel by inserting them with a tenon into the ends of the barrel and gluing them in place. Alternately, moveable handles can be made with internal hardware so that the barrel rotates on metal hardware, but the handles stay stationary and do not rotate.

Bob suggested that the best hardwoods for making the barrel and handles were closed grain woods like maple, birch, cherry, and ash. He said to avoid any woods that typically were considered to cause allergic reactions in some people like exotic woods of cocobolo or rosewood, or even black walnut. The wood for the barrel can also be produced using several species of different hardwoods that are glued up into an interesting pattern while the species used for the barrel and handles can be different for contrast and artistic design.



The first piece demonstrated by Bob was his *ten minute* rolling pin with both the handles and barrel made entirely from one piece of 12" hardwood. He turned between centers and used a roughing gouge on the barrel and a bedan on the handles to get the rough shape. He then switched to using a skew for finer shaping and a smoother finish. The important point he made was to **make sure the barrel is a true cylinder**. He suggested using a ruler/straight edge placed parallel to the barrel to check down the barrel for a straight cylinder shape before starting to sand. A straight board to support a piece of sand paper to achieve a more perfect cylinder shape.



Bob suggested finishing the rolling pin with any food safe material such as commercially available finishes that use mineral oil.

Use Calipers to
Measure the
Diameter of
Your Rolling
Pin

You Want a
True Cylinder

FEBRUARY 2017 DEMONSTRATION, PAGE 2

For further education, Bob talked about wood fibers with a *larger than life* piece of wood made from a handful of plastic straws glued together to simulate what wood fiber might look like



under magnification. Bob then produced some *larger than life* giant wood turning tools – bowl gouge, skew, and roughing gouge. He explained what it meant to cut wood fibers in various directions, such as what it means to cut *downhill* and slice the fibers cleanly rather than cutting *uphill* and lifting the fibers as you try to cut them.



Bob then moved on to demonstrate making a rolling pin with a three piece barrel and rotating handles attached using internal hardware. Bob



presented this option for those who don't own a full size or midi lathe. The idea was that a rolling pin barrel could be made on a mini-size lathe in three pieces and glued together. The two 5" end pieces were made and drilled to accept a "T" nut that would later be used to fasten the handles



onto the barrel. The center piece was made with square shoulders and with tenons on each end that would fit into holes drilled in the other two



barrel pieces (opposite the "T" nut end). Once the glue sets the piece could be put back on the lathe between the tail stock and a jam chuck on one end to blend the three pieces into a smooth cylinder shape.



The 3.5" long handles for this demonstration of the three-piece-barrel rolling pin were drilled with a bit that was 1/32" wider than the 1/4" bolt used to pass through the handle. The handles were turned between a tail stock and a jam chuck. The bolt was recessed into the handle during a second drilling so that the bolt would stick out the other end of the handle by 1/2". A decorative

plug was turned to cover the recessed end of the handle and the bolt head. After the handle was attached to the "T" nut in the barrel (with a nylon washer in between), the decorative plug was glued in place.



Special Tool Used By Bob in His Demo

Bob pulled out this tool to measure the radius during his demo. We think it is a radius gauge that can't be bought. If you find it, let us know so the source can be published.



Submitted by Chad Dawson

Photos by Heather Muckley & Barbara Raymond-LaPrease

FEBRUARY 2017 WORKSHOP

The February Saturday workshop was held at Eight Acres Event Center on the 25th with **Bob Ireland** as our instructor. We had eight members who attended the workshop with Bob and four mentors who helped out. Thanks **Mark Baumes**, **Charlie LaPrease**, **Larry Prunotto**, and **Mel Taber** who helped. **Doug North**

stopped by and offered up support as well. All of the attendees worked on a rolling pin. Each walked away with new knowledge and appreciation for turning. It really helps to have additional hands available at the workshops. Remember, mentors do not pay but gain valuable skills also!



FEBRUARY 2017 WORKSHOP—MORE PHOTOS



SATURDAY WORKSHOPS

Saturday workshops allow members to receive additional training on a subject presented during the regular meeting demonstration as well as an opportunity to get basic turning experience with help from mentors at the workshop. Information about each workshop is provided so you are aware any tool and/or wood requirements. There is a \$5 fee for each participant. Pre-workshop sign-up is desired since many of the workshop instructors travel a distance to hold the session. Most workshops are held from 9am to noon at the club's workshop space at the Eight Acres Event Center in Baldwinsville, the home of Barbara & Charlie LaPrease. Directions are available at the meetings or by email. Generally coffee and tea are provided.

Snacks are always welcome. Parking is either on the street (one side only please) or in the drive-

**March 18th Workshop
Turning a Rolling Pin**

Join *Terry Vermilyea* on Saturday, March 17th for a workshop where you can turn a small decorative piece from wood blanks provided by Terry..

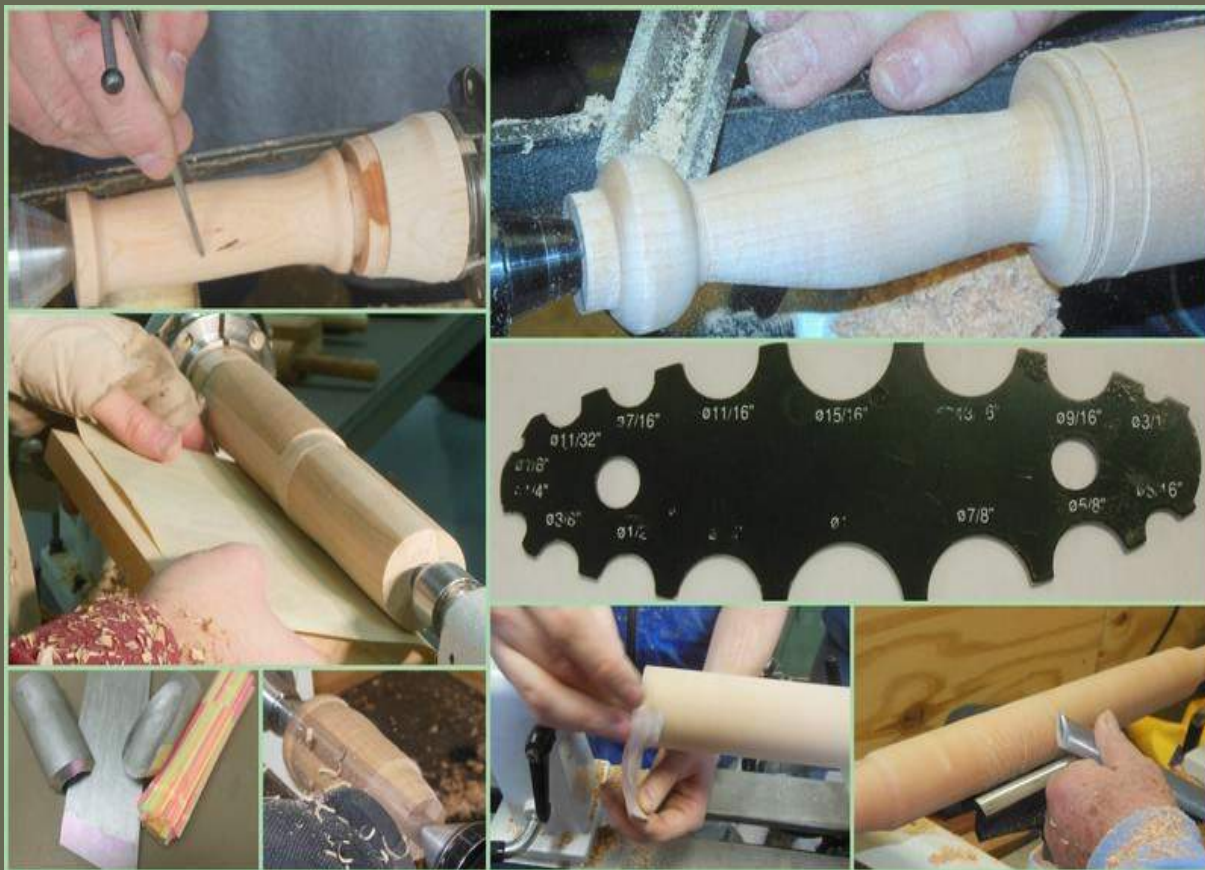
What should you bring? If you have one, bring a bottle stopper mandrel. Or, bring your 4 jaw chuck. Also bring your tools.

Questions? Ask at a meeting.
Please register at the meeting!

Mentors welcome to join us!



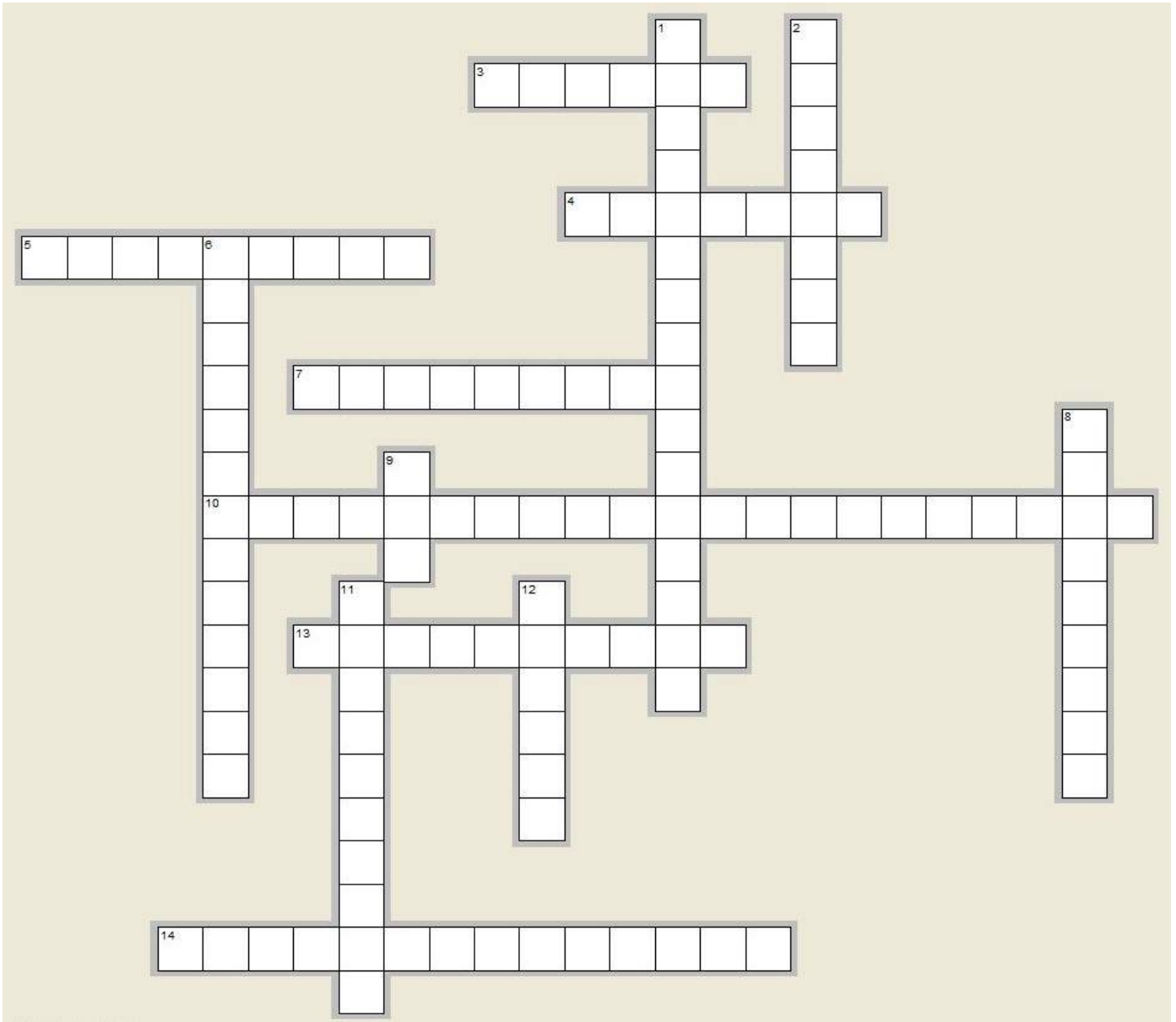
CLOSE-UPS FROM FEBRUARY EVENTS



OUR FEBRUARY MEETING IN PHOTOS



OUR MARCH CROSSWORD PUZZLE



CLUES

ACROSS

- 3. When you cut _____ you lift the fibers as you cut them.
- 4. "I've never had a blow-up" is not a badge of honor but a _____.
- 5. _____ is the site of the Mid Atlantic Symposium in October.
- 7. Use a wide board with _____ to keep your cylinder shape.
- 10. If used in this way, this tool's warranty is voided.
- 13. The _____ is the space directly behind and in front of the workpiece.
- 14. Saratoga Springs is the location for _____ on April 1 & 2.

DOWN

- 1. Avoid these types of woods when making a rolling pin.
- 2. A rolling pin's barrel need to be a true _____.
- 6. This southern belle who visited us is a demonstrator for the Mid-Atlantic Symposium in October.
- 8. Cardinal wood is also known as _____.
- 9. American Association of Woodturners
- 11. A _____ is your last line of defense when turning.
- 12. Turners need to be on the lookout for _____ or grain changes in a piece while turning.

WOOD EDUCATION — BLOODWOOD

Bloodwood (*Brosimum rubescens*) is often referred to as satine or cardinal wood, for its obvious beautiful deep rose color. Sometimes you will find pieces with golden yellow strips. With age its color does darken but not significantly so it is a great wood to use when you want a deep red color.



The wood itself is extraordinarily hard, dense, heavy, and tight grained. Because it is so dense, it can be difficult to plane/cut without sharp equipment so you may be sharpening your tools more often when working with it. Also, the boards often hold a lot of tension, so when resawing, it may warp. It takes a high polish when finished.

The wood is sourced from South America, chiefly Brazil. Bloodwood trees range from 40-70' tall with diameter of 12" up to 24" for a large tree. Limbs are generally present in the lower sections of logs and are cut out to produce clear usable lumber. The darker red

stock is getting harder to find and most of the recently imported wood has streaks or light color present.



When cutting bloodwood, you may notice a mild scent and the wood's dust has been known to occasionally cause effects such as thirst and salivation, nausea, and skin irritation.

FUN FACT: Do not confuse Bloodwood with *Pterocarpus angolensis* which is a kind of teak native to southern Africa, known by various names such as Kiaat, Mukwa, and Muninga. It is also called the Bloodwood tree, so named for the tree's remarkable dark red colored sap. A chopped trunk or a damaged branch of the tree starts dripping deep red fluid, almost like a severed limb of an animal. The sticky, reddish-brown sap seals the wound to promote healing.



Bloodwood is one of those woods with many names. It is also called *Amapara, Pau rainha, Falso pao brasil, Conduru, Satine rouge, Satinwood, Muirapiranga, Satine rubane, Siton paya, Satijnhout, Doekaliballi, Satinholz, Ferolia, Legno satino, and Palo de oro,*

EDITORIAL RAMBLINGS

Each month, I spend about two days assembling this newsletter. Several of you have commented about the content and quality you receive on a monthly basis. One of the reasons that I spend the time is to provide information about the what happens at club meetings to every member (not just the ones who make it to a meeting). One of the other reasons is that I believe providing a broader range of information to members will spark new ideas.

When creating this newsletter, it helps to receive support from members. More assistance is always welcome. For example, in addition to Chad writing up the demonstration, Doug writing his column, and Mr. Renrut providing answers, this month, Mike Gridley stepped up and provided photos and *captions* to share with you how to create the jigs he showed at the February meeting. Thanks Mike!

Why do I tell you this? Because I know there are many similar stories out there among our 100+ members. And, I am hoping you will consider providing similar stories/summaries for a future newsletter. Think about what you do in your shop. I know there

are some special stories. Oh, and don't forget that stories about your visit to a symposium or wood show are always welcome as well. Be sure to talk about what sessions you attended and one or two things you learned in each session. Just start writing. You will be very surprised as to how quickly you have a nice story. Don't worry about the grammar; ask Bob Casey or Doug how I fix up their writings! So I hope you enjoy this month's newsletter and will consider providing some input in the future.

As you all know, we are meeting at the Belgium Cold Springs Fire Department at no cost to the club. How can you give back to the Department? Attend one of our fundraisers. The one coming up is our annual pancake breakfast on April 9th, Palm Sunday. Please join us for a great meal! Details are in the box right.

Here's a fun date to put on your calendar—August 5th! Why? SWWA invites you all to our annual family picnic held inside the fire hall. Please plan to join us and bring a dish to pass. More details later!

Stay safe ...See you soon, *Barbara*

Belgium Cold Springs Fire Department

2017 Palm Sunday Pancake Breakfast

**Sunday, April 9th
Serving 7am—1pm**

**Adults — \$8
Seniors — \$7
Children 3-10 — \$5
Children < 3 — Free**

New Hope Pancakes Scrambled Eggs

**Bacon
Gianelli Sausage
Ham
Home Fries
Drinks**

CREATING GREAT JIGS FOR THE LATHE

At the February meeting, **Mike Gridley** showed and talked about how he made jigs using a 2x4 board (right). Mike provided more detail for the newsletter.

Mike noted that he learned this trick from **Bonnie Klein** who willingly shared it during one of her demonstrations.



Assemble the materials: A 16" piece of 2x4, one inch nuts (find at Tractor Supply), 1" brass ring, 5

minute epoxy, Titebond glue.

Gather the tools: A compass, a 1 1/8" Forstner bit, band saw, & lathe.



Scribe 4 circles on the 2x4. Accentuate the center point to help guide the point on the Forstner bit.

Drill holes about 3/4 of an inch deep into each hole. This is where the nuts will go.



Line up nut and pound firmly to the bottom of the hole. The other two blocks in each 2x4 are sacrificial blocks to each 'jig'.



Apply the 5 minute epoxy 2 nuts a time or the epoxy starts to set up on



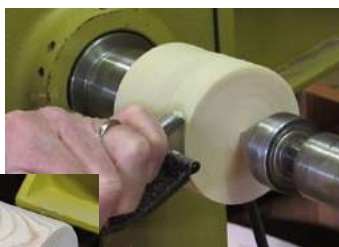
you. Once the epoxy is fully set, use your band saw to cut the blanks out of the 2x4.



At this point, Mike adds a brass ring on the head stock to insure a tight fit.



Screw one of the jigs to your headstock. Glue your sacrificial block to the jig with the Titebond using your tailstock to center it. True up the blocks along the outside and at the face.



The final jig can be used in many ways.

One way to use it is for sanding. How? Glue a 12 inch plywood disc to the disc with the nut. Then, add 4 wood screws into the jig to hold the plywood disc securely. Be sure to countersink the screws so they don't protrude through your sandpaper. Use temporary adhesive spray to attach a disc of sandpaper.



Why create a sanding disc like this rather than using your bench top disc sander? If you make several, you can have multiple grit discs made up for different applications.

How do you store all of these jigs?

Go to Harbor Freight and purchase the strip magnets for about \$6. It'll be quicker than pawing through a box to find the one you want!

Your Lathe has a 1 1/4-8 Sized Spindle?
 You could purchase a spindle adapter or adjust the nut size to your lathe!
 But, Tractor Supply does not sell larger nuts. Sources:
 Rumetco Sales, 601 West Bear Street, Syracuse
 Hiawatha Fasteners, 6312 East Taft Rd, Syracuse

Submitted by Mike Gridley
 Photos by Mike Gridley

ASK MR. RENRUT

Dear Mr. Renrut,
I love using CA glue to finish my pens, bottle stoppers, and other small pieces but my bottle of glue always clogs up. How can I fix it?
Clogged

Dear Clogged,
When you finish using your glue, always tap the bottom onto your work surface. This will return the excess glue to the bottle. Also, consider purchasing extra tips and using a small jar (maybe an old jam jar) to store those tips. Fill the jar with acetone!
Mr. Renrut

Hey Mr. Renrut,
Speaking of CA glue, what do you use to apply it and how many coats do you use?
Wondering

Dear Wondering,
Do you have those small plastic bags in which your pen parts arrive? Put one over a single finger. Also cut a piece of paper towel. Apply a small amount of medium CA glue to the paper towel which is held by the finger covered with the plastic bag. Apply with light pressure back & forth to the piece while running at slow speed. Build up slowly with 6 coats.
Mr. Renrut

Hey Mr. Renrut,
I recently rough-turned a good quantity of wet cherry. Midway through the work, when changing my chuck jaws to a larger set, I found that the screws that secure the jaws were very difficult to loosen.
Frustrated

Dear Frustrated,
Moisture from the wood contributed to the screws locking in place. Another cause probably was the tendency to over-tighten the screws. Apply an anti-seize lubricant to the screws to make it easier to back them out the next time. The jaw screws come with anti-seize compound on them from the manufacturer, but the lubricant needs to be replenished over time. The lubricant is commonly available at automotive supply stores. Chucks are not the only turning equipment that need anti-seize lubricant. The screws that secure carbide cutter inserts to a tool shaft can also be difficult to loosen.
Just a warning ... Before you replace any

Dear Mr. Renrut,
I hear lots of folks talking about a 1/3 - 1/3 - 1/3 mixture they make for finishing at meetings. I also hear about toothpaste—is it really a finish? Can someone enlighten me?
Confused

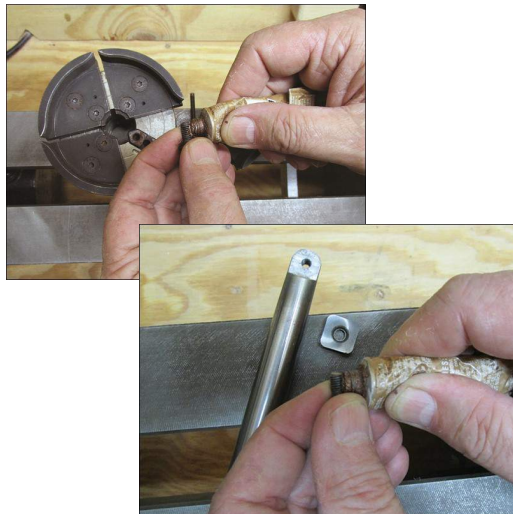
Dear Confused,
The 1/3 finish formula has been around for a while. Even many of the commercial products are based on the formula. The components of your combination is your decision. For example, you can use polyurethane, mineral spirits, and boiled linseed oil (BLO). Two other 1/3 formulas are mineral spirits, Danish oil, and BLO or mineral spirits, Tung oil, and BLO. There are also 2-part formulas, two of which are turpentine and beeswax or mineral oil and beeswax.
As to the toothpaste, Charlie likes to store finishes in reusable containers. One of those is an empty Crest gel plastic bottle. It's a great size for handling and stores a good amount of finish.

Mr. Renrut

Mr. Renrut will answer your questions. Please feel free to send your questions by the 15th of each month to the editor at secretary@cnywoodturners.org.

screws in your tools, be sure to clean out any sawdust or other junk in them using an awl or other pick-type tool. If you don't you will likely strip the screws when you reinstall them.

Mr. Renrut



Thanks to Leon Olson of Minnesota for this tip

Mr. Renrut will answer your questions! No question is stupid, just not asked!

AAW Explore!

A Better Way to Search the AAW Library of 30 Years of the *American Woodturner Journal* plus other AAW publications!

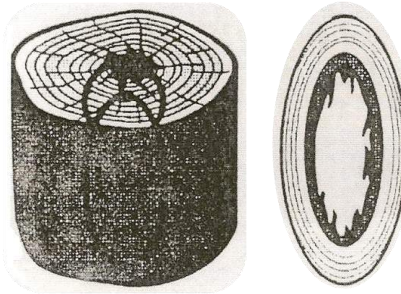
It's what we asked for! If you are an AAW member, take some time to test it out

You MUST be a member to use. Why not join today!

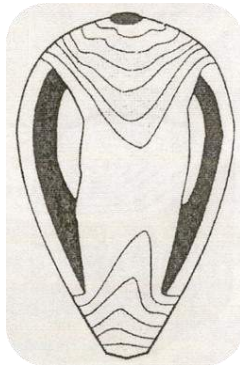
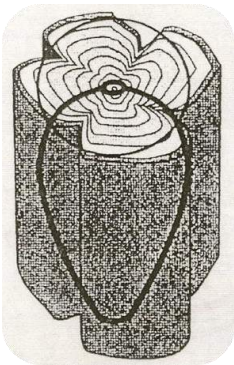
www.woodturner.org

CUTTING YOUR BLANK & GRAIN ORIENTATION

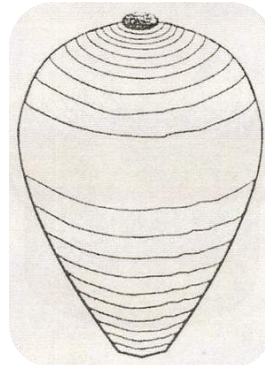
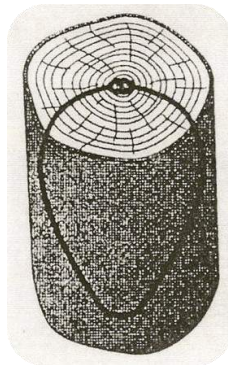
Every turner wants to make pieces that say *Wow!* when someone looks at it. Achieving that wow factor is a combination of cutting your log properly and mounting your blank properly. There are many ways to mount and each produces a different look. At some point in time, a turner created drawings to show the best ways to cut and mount. No one is sure who created the drawings. We continue to present the drawings for your reference. Enjoy!



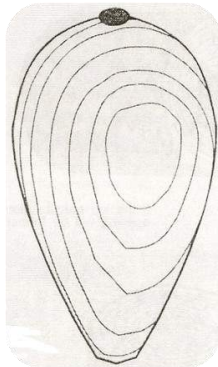
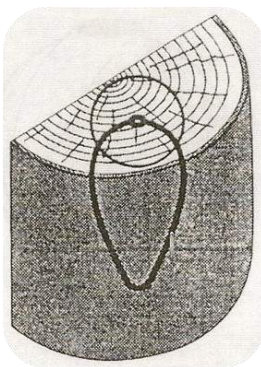
A tall vessel turned with the wider diameter overextending the hollow center and the outside edge will have a hollow opening extending through the vessel.



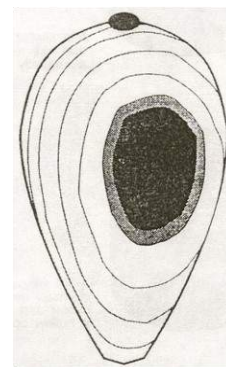
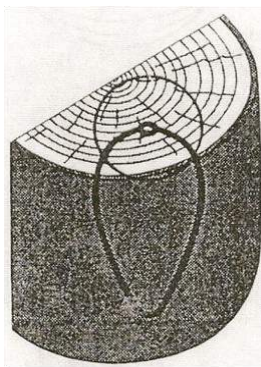
A vase form turned from a convoluted log will have openings along the sides where the wider portion of the form intersects the air.



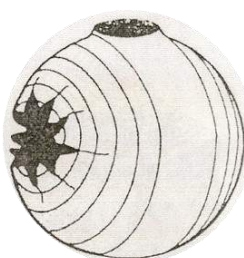
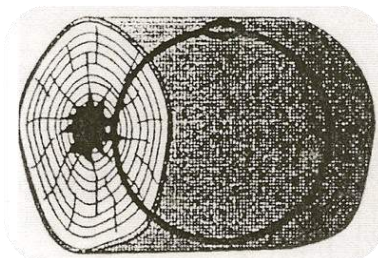
Theoretically, a form turned with the vertical axis through the pith and the larger diameter through the sapwood will have a light ring around the widest portion, with a concentric circular grain pattern.



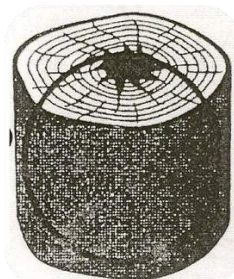
Turning a form in which the diameter extends into the sapwood will show a sapwood patch at the widest portion, surrounded with concentric ovals to the other side.



If that diameter overextends the bark, a hole will occur on the side at the widest portion, surrounded by the bark edge and sapwood.



If the log has a natural hole through the pith, a natural opening will be formed on each side of the vessel.



If a similar form is turned from a log that has rot in the center, there will be a naturally rotten edge on the vessel.

FEBRUARY 2017 CNY WOODTURNERS MEETING

The February 14th meeting of the CNY Woodturners was opened by president **Doug North** at 6:15pm. We had 45 members in attendance with three new members **Michael Arnold** from Pennellville, **Federico Meira** of Cazenovia, and **Kate Untiedt** of Lafayette (upgraded to family membership) and one registered visitor—**Bob Stella** of Liverpool.

The meeting was held in the Community Room at Station One of the Belgium Cold Springs Fire Department.

After welcoming everyone, Doug reminded everyone that if they have questions about the 501c issue to please direct those questions to Chad or Doug. He also reminded folks that if they have not paid their dues, it was time to do so.

Doug asked **Mark Baumes** to present a short treasurer's report. He noted that our treasury is stable and renewals are on track.

Doug reminded everyone that March's meeting would be on Tuesday, March 14th. However, he noted, the room will not be available on Tuesdays in the future due to a class being held so starting in April our meetings will move to Wednesdays. So, mark your calendar for Wednesday, April 12th.

Doug reminded everyone about events coming up, including the Woodworking Show in Somerset, NJ.

Also, the Finger Lakes Woodturners are hosting John Beaver the weekend of March 16th. See the newsletter or their website for more details. He is speaking at their meeting, the Rochester Woodworker's Society meeting, and giving a demonstration and

workshop.

Totally Turning which is an excellent training opportunity, is April 1-2 in Saratoga Springs. You really should consider attending!

The AAW national symposium is June 22-25 in Kansas City.

He added that the Mid Atlantic Woodturning Symposium will return to Lancaster, PA on October 28-29. Again, a really great event to attend based on their 2016 success. Put it on your calendar!

At this point, **Bob Ireland** stepped gave an excellent multi-part demonstration on turning rolling pins.

Following the demonstration, Doug reminded everyone to vote on this month's challenge of bowls. Also, sign-up with Mark for the Saturday workshop which will be the 25th.

The Challenge for March will be ROLLING PINS.

After the break, Doug led the group through *Show & Tell* (pages 7-9) and the *Monthly Challenge* (pages 3-6). The People's Choice in the Challenge was won by **Mel Taber** while the Participant award was won by **Bob Randall**.

The meeting ended about 8:30pm and everyone helped clean up the room.

The next meeting is Tuesday, March 14th in the Community Room of Station One of the Belgium Cold Springs Fire Department, 7920 River Road, Baldwinsville.

Respectfully submitted,

Barbara Raymond-LaPrease, Secretary

The Monthly Challenge for March is Rolling Pins! How creative can you be?

TOTALLY TURNING — APRIL 1-2 IN SARATOGA SPRINGS

What is this event called **Totally Turning**?

It is two days of seminars with several nationally known turners, an opportunity to see world class turnings, an opportunity to purchase materials from vendors, and also an opportunity to see a variety of *flat board* projects.

The event is put on by members of the Adirondack Woodworkers Association and held in conjunction with 26th annual fine woodworking show—**Showcase** – put on by the Northeastern Woodworker Association (NWA).

The whole event is held at the Saratoga Springs City Center on **April 1 -2** from **10am to 5pm** daily. The featured demonstrators for 2017 include **Trent Bosch, Jimmy Clewes, David Ellsworth, Chris Pytlik, and Curt Theobald**.

Is there a cost to attend?

Yes, the 2 day Totally Turning registration is \$180 per person, pre-registered.

Can I enter my turned pieces in the Totally Turning Instant Gallery?

Yes, you can. You register your pieces upon arrival but before 6pm on Friday if you want the pieces judged. There is no limit on the number of items you can enter. You may deliver on Saturday or Sunday but the pieces will not be judged as the judging occurs on Friday evening.

What are the categories for Totally Turning?

They are not yet listed on the website <http://www.totallyturning.com>

What about hotels?

The Saratoga Hilton is attached to the City Center but you MUST make your reservations today. There is a discount rate. There is a Hampton Inn down the hill from the City Center. Check the event [website](#) for more information on discount codes.

SEMINARS INCLUDE

Natural Edged Bowl from a Half Log

Revelations in Hollowing

Lidded Box with Exotic Insert

Open Segmented Turning

Casting & Turning Solid Resin

Turn a Yarn Bowl

Two-Piece Hollow Form

Photographing Your Work

MAKING A WALKING STICK BY Fred Holder

When I was younger and my wife and I did a lot of camping and hiking in the woods, I used to pick up a suitable stick around 5 to 6 feet long and about 1-1/2 inches in diameter at the largest end and use it for stability along the trail. It helped to push you up hill when you were climbing and it helped to put a brake on when you were descending a slope. I generally adopted this stick for the duration of the camping trip if it was a good one. I then discarded it when we went home.

Well we don't go camping anymore and I don't hike on hillsides, but I do still walk along side of the road and sometimes the uneven ground makes one a bit unsteady. I had thought of making a walking stick for several years. A couple of months ago, the bug got even stronger.

I selected some dogwood square stock that I had and began to work on my walking stick. I wanted it to be about 5 feet long and about 1-1/2 inch in diameter at the hand hold area, but I also wanted to be able to take it in the car should I wish to go hiking in the hills. This meant at least one join.

I didn't think that the brass joins available for canes would be heavy enough for my walking stick. Initially, I made up a join out of lignum vitae, but it didn't work out because as I got the female portion down to size, it was too thin to stand up to the pressure and cracked. It was redesign time! I decided that a 3/4" pipe coupling should be about the right size. I made up two male threaded pieces out of lignum vitae with 3/4" tapered pipe threads on one end and a tenon on the other to join to the walking stick. I had an insert out of a pipe threading machine, so I clamped this into a pair of vice grips and used it as a thread chaser to chase the threads. The iron coupling looked ghastly, according to my wife. So a visit to the hardware store turned up a brass coupling with a hex exterior shape. She didn't like that either.

I mounted a piece of Osage Orange in one of my Nova chucks and chased a thread for the coupling. Using a 1/8" parting tool, I faced off the end of the coupling until it was square with the threads, reversed it so the faced off end was against the shoulder on my holding chuck. Now, both ends were square to the threads. Using the 1/8" parting tool, I then turned away the hex shape of the coupling, sanded and polished. It



looked great on the walking stick and my wife was happy with it too. My join worked well and looked good and was strong. The only weak part was the glue and lignum vitae. It finally took epoxy to hold. I made two more walking sticks with somewhat improved joints using lignum, but I believe that I would settle for boxwood if I make anymore.

Because a lot of my walking is done on pavement, I chose to use a rubber crutch tip on the ground end. They come in black and blond--the blond looked better on the dogwood walking stick, black might look better on a different wood.

Rather than try to make the wood of the stick blend in perfectly with the brass coupling, I placed a bead on either side of the coupling. This gave the coupling a shoulder to butt against and gave a perfect fit. The wood above and below the beads was turned to look like a continuation right through the coupling. I also felt the stick should have some form of texturing for a better grip in the grip area. I toyed with a couple of different ideas, but finally settled on a section about 9-1/2" long made up of 1/4" beads. I have a Robert Sorby beading tool that made this job fairly easy. This worked very well and I've used it to good effect on the other two walking sticks that I've made.



Even though these pieces were only about 29-30 inches long, I had to use a steady rest to stabilize the wood for turning. On small things like lace bobbins and treen, one can normally stabilize it with their fingers. I simply couldn't do so on something this size.

The top part of the walking stick has no function other than decoration. However, the beaded section between the two large beads serves a very useful purpose of providing an excellent hand hold area. I made this section about 9-1/2" long because that was about right for my tool rest. I could bead the whole area without moving the tool rest. The join was made with two threaded pieces of lignum vitae and a 3/4" brass pipe coupling. The threads are 14 tpi chased with a die insert held with vice grips.

Walking Stick by Fred Holder Demo'd by Harold Swanson



Editor's Note: *More Woodturning Magazine* has a program for Woodturning Club Newsletters whereby they provide articles to be included in newsletters. This is the current article provided. Check out the website at

www.morewoodturningmagazine

SHAVINGS & SCRAPS

Club Video Rentals

The club maintains a library of various videos in DVD format for rental by members. The cost is \$3 per month. If you miss a month to return a video, you must pay \$3 additional for each month over the initial month. We urge you to try to return on time as many others have interest in the videos as well. If you have suggestions of videos to be added to the collection, please let **Phyllis Radford** know. Donations are always welcome and if you know of DVDs that should be added to the collection, please give Phyllis the information—name, instructor, where to purchase, cost, etc.

Club Book Loan Program

The club was given six books and the Board decided to put them in a mini-library. You may loan them from **Phyllis Radford** at meetings. The titles are:

- ◆ **Learn to Turn** by Barry Gross
- ◆ **O'Donnell's Woodturning Techniques** by Michael O'Donnell
- ◆ **Pen Turner's Workbook** by Barry Gross
- ◆ **Woodturning Chessmen** by Mike Darlow
- ◆ **Woodturning Methods** by Mike Darlow
- ◆ **Woodworker's Guide to Turning** (Back to Basics)

Club Sandpaper Sales

The club purchases Carborundum sandpaper in bulk for resale to members at meetings. Ten grits of sheet sandpaper are available at **\$0.75** per sheet – 80, 100, 120, 180, 240, 320, 400, 600, 800, and 1000. Sanding pads of 5 different grits – medium (120-180), fine (320-400), superfine (500-600), ultrafine (800-1000), & microfine (1200-1500) are also available at **\$1.50** per pad.

Club Tool Loan Program

The club owns 10 lathes, 5 sets of basic tools, 2 face masks, 2 chuck sets, 5 pen mandrels, and several other miscellaneous tools. Members may borrow equipment if they have a need. Tool loans must be limited to a **maximum of 2 months** and tools must be returned where loaned from, not handed off at meetings. The Board recognizes that tools are often loaned because beginners need to figure out what to purchase and we encourage you to borrow the club tools as a way to determine what you like.

Vendor Discount Programs

Several different vendors offer discounts for members of local woodturning clubs and some if you are a member of the American Association of Woodturners (AAW). Currently, we know of the following discounts:

Carter & Son Toolworks—10% discount on their variety of premium quality interchangeable woodturning tools. Use code **club10** at checkout. Orders can be placed by phone at **(206) 878-7672** or from their internet page at www.carterandson.com. When ordering by phone, mention the 10% *Club Discount*.

Hartville Tools—A discount of 15% for members unless the items is on sale or is on clearance and the prices is better. Orders can be placed by phone at **800-345-2396** or from their internet page at www.hartvilletool.com. When ordering by phone, identify yourself as a *Club Discount Program Member*. When checking out via the internet, type *Club Discount Program Member* in the Checkout Notes.

Klingspor—A discount of 10% off all non-powered merchandise in the catalog. Call (800) 228-0000 and identify yourself as a member of the *CNY Woodturners*. Check their website www.woodworkingshop.com for product info.

Rockler—Buffalo Store—A discount of 10% for members unless the item is on sale, a power tool, Leigh jig, CNC, Festool, or gift card. Must show name badge.

North Woods Figured Wood - All AAW & Club members have access to a lifetime use 15% discount on any website wood purchase. Use "WOODTURNERS" coupon code at checkout. www.nwfiguredwoods.com. They would be happy to send you brochures with the coupon code.

Starbond—Offers a 15% discount off \$150 orders for AAW club orders. If someone is willing to coordinate an order, please let Larry know. He has the price list.

Do you know of a company that offers discounts to woodturning club members? Please notify [Larry Prunotto](mailto:larry@turningtimes.com), our Vendor Relations chair. Check back regularly for new deals!

Know of a Vendor Discount Program? Tell [Larry Prunotto](mailto:larry@turningtimes.com), the Vendor Relations chair, so it makes it in the newsletter!



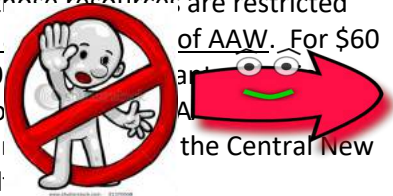
SHAVINGS & SCRAPS

WHY SHOULD I JOIN THE AAW?

You enjoy woodturning and want more. Your club, the Central New York Woodturners is chapter of the American Association of Woodturners—AAW. What does that mean for you as a member of our club?

The club officers have access to a variety of resources from the AAW to help manage the club, including a negotiated reduced price for our club liability insurance.

However, these resources are restricted unless you are a member of AAW. For \$60 a year (\$50 a year plus \$10 for the journal), you get access to your membership at the Central New York Wood



What do you get for that amount? First, you get the *American Woodturner* journal six times a year. The journal has always been a wonderful resource for woodturners. And, if you are an AAW member, you get FULL access to all 30 years of the journal. While the index is not as good as it could be, just being able to look for and secure articles on a particular topic easily is a blessing. When was the last time you tried to get the same information at a library?

So is that it? **NO!** You also have access to a new publication—*Woodturning FUNDamentals!* Started in late 2012, our club has contributed several articles to this bi-monthly online only publication which contains some great articles, projects, and other information that is valuable for every woodturner!

The March 2017 issue of *Woodturning FUNDamentals* contains project information for making a 3-sided weed pot, a letter opener, a jig for bandsawing round objects, and tool handles. It also contains articles on tool accessories every turner needs and several different shops tips. And there is much more!

The February issue of the *American Woodturner* contains feature articles on the fundamentals of spindle turning, a bottle opener, pen finishing, turning a mallet, adding a metal accent ring, turning a half moon purse, multi-axis turning, and much more!

As you can see, each publication contains practical information for the woodturner!

Is that all I get for \$60 a year? **NO!** Here is a short list of what else you get:

- 👉 Several mini-woodturning foundation books
- 👉 Several mentoring resources
- 👉 Access to *AAW Video Source*—a searchable database of pre-screened videos
- 👉 Access to the *AAW Forum*—a way to interact with your fellow woodturners worldwide

AND Coming on April 1st:

- 👉 **Woodturning FUNDamentals Online** — An easy-to-use integrated online learning experience designed for new turners and those who would like to build woodturning skills.
- 👉 **Discover Woodturning Online** — A new web-based resource loaded with introductory and description information about the art & craft of woodturning, designed to educate the general public.

TRY THE FREE 60 DAY GUEST MEMBERSHIP

Kick the Tires—See What There Is!

AND MUCH MORE! Join Today!

You can join right online!

Don't forget to indicate you are a member of our group when you setup your profile

Check it out by clicking [here](#)

Not an AAW member? Why not? There are so many great resources available from the Association!



AAW SPRING SPECIAL!!

If you've never been a member of AAW, you can join from April 1—June 30 for just \$30.

Yes, you get the great Journal with that membership!

WHAT A DEAL!

SHAVINGS & SCRAPS

Sharpening Services

One of the most asked questions is *where can I get table saw blades and other tools sharpened*. The Sharpening Shed in Cicero closed and the person who purchased the tools hasn't really started up the business.

We Know of 2 Options:

Paul E. Hart runs a service at 7902 Kirkville Rd, Kirkville, NY 13082. The phone number is (315) 656-2899. Phyllis noted that her father has previously used the service. The prices depend upon the number of teeth and size of blades. He also sharpens hand saw and replaced tips on saws. The flyer she provided has the following statement: "All saws on being received will be cleaned, checked for run out, minor retension (no charge), sharpened, polished, and dipped in plastic to protect the tips and prevent rust." If you use the service, please report back.

The second is an old friend – **Gordon Scholfield**. He is still doing sharpening out of the Tweeter Feeders store which is located on the east side of Route 57 just a half mile north of Route 31. The store is at the end of a group of buildings. The Premo sheds business is across the street. His prices are reasonable (per Charlie). If you use his services, let me know. There is a price list in the store at the service desk.

Thermal Finger Covers

Are you doing some woodburning and find your fingers getting hot? There's a new product available from Treeline – *Thermal Finger Covers*. A 3 pack of the covers costs just \$4.99! The covers are made of heat resistant silicone and designed to be resistant to 400 degrees. They fit almost any size finger and easy to put on. They come in various colors. Treeline is at www.treelineusa.com or 800-598-2743



Sanding Pads

At the October meeting, Mel Taber talked about and showed some pads for sanding that looked like mesh. They are called **MirlonTotal**, nicknamed *Scuff Pad*, and are manufactured by Mirka. The pads come in three grits that are useful for woodturners – 360, 1500, and 2000. Each pad is 6" by 9". They are packaged in boxes of 20. Mel purchases his through Beaver Industrial Supply (beavertools.com) [800-365-6677].

Red → "Very Fine"

Grey → "Ultra Fine"

Beige → "Micro Fine"

The cost per box is \$16-\$18 per box.

Local Source for All Sorts of Filters

Jerry Holbrook found a great local source for filters of all different sizes. He needed a 24" x 24" x 4" 30/30 filter for the Oneida Air dust collector. He found them at a firm called EDCO. Well, **Robert Love** reports that they are now called **Camfil USA** (<http://www.camfil.us>) and they have moved to 6600 Deere Road, Syracuse. The phone number is (315) 468-3849. Robert reports the prices are still great!

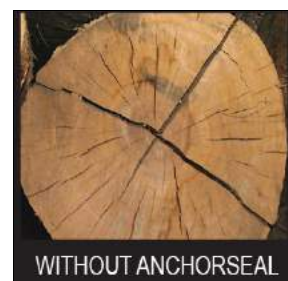
Mike Shuron, an SWWA member who relocated to Kentucky, says that he is buying the filters for his Jet and Delta air cleaners on the internet via FilterBuy (<https://filterbuy.com>). He states that first time users receive \$10 off and the prices are better than Rockler or Woodcraft.

Anchor Seal Available Again!

Anchor seal is used to seal the end grain of green wood to encourage slower drying and thus less cracking. The club purchased another 55 gallon drum of anchor seal and is dividing it into gallons and sold at meetings. The jugs are sold for \$10 each at Charlie's sale table during most meetings.

CLEAN GALLON WASHER SOLVENT JUGS NEEDED for anchor seal—Not flimsy milk jugs. Give to Jim Yonkers at meetings.

Did you find a great product that should be shared? Tell Barbara so it makes it in the newsletter!



REGIONAL MEETINGS & CONFERENCES

Finger Lakes Woodturners

Finger Lakes Woodturners (FLWT) generally hold their meetings on the third Thursday of each month from September to May. Their next meeting brings their second national turner—[John Beaver](#). John will show the process for making his wave bangles and bowls at their meeting on Thursday, March 16th. On Friday, March 17th, John will again discuss his “wavy” design style of turning at the [Rochester Woodworkers Society](#) meeting at St. John Fisher College. On Saturday, March 18th John will provide a full-day demo on his wave products.

Check out their website for directions to the meeting at the Isaac Heating & Air Conditioning Training Center, 50 Holleder Parkway in Rochester. <http://www.fingerlakeswoodturners.com>

Regional Symposiums

Several woodturning clubs hold symposiums on a regular basis. The closest, *Totally Turning*, returns to Saratoga Springs in 2017 on **April 1-2**. Obviously, the biggest symposium is the AAW International Symposium; but there are others you can also plan to attend. Here are a few within a day’s drive:

April 1-2 – Northeastern Woodworkers Association present the 27th *Annual Showcase & Totally Turning* at the Saratoga City Center in Saratoga Springs. Featured demonstrators will include *Jimmy Clewes, Curt Theobald, David Ellsworth, Trent Bosch, Chris Pytlik, Kurt Hertzog, Rick Angus, Lynda Zibbideo, Willie Simmons, and Ralph Mosher*. [More details page 21!]

September 15-17—*Turning Southern Style XXI* presented by the Georgia Association of Woodturners at the Northwest Georgia Trade and Convention Center in Dalton, GA. Featured demonstrators are *Nick Cook, Beth Ire-*

land, Glenn Lucas, Harvey Meyer, Pascal Oudet, and Joe Ruminski

October 13-15—Ohio Valley Woodturners Guild present *Turning 2017* at the Higher Ground Conference Center in West Harrison, IN. Featured demonstrators are *Jimmy Clewes, Nick Cook, Ashley Harwood, Avelino Samuel, and Keith Gotschall*.

October 28-29—*Mid Atlantic Woodturning Symposium* at the Lancaster, PA Marriott. Plan now to attend. They pulled off an EXCELLENT event in 2016. Featured demonstrators are *Stuart Batty, Cynthia Cardon Gibson, Ashley Harwood, Avelino Samuel, Curt Theobald, Hans Weissflog, Jakob Weissflog*. Registrations begin in April. Watch the website [here](#) or the Facebook page [here](#).

Annual AAW Symposium

Plan to attend the 31st annual AAW Symposium. It will be held in Kansas City, Missouri at the Kansas City Convention Center with the host hotel as the Kansas City Marriott on **June 22nd thru June 25th**. Get the latest information from the [AAW website](#). If you are planning for the future, the 2018 Symposium will be in Portland, Oregon.

The symposium features 3 days of woodturning demonstrations and meetings led by over 70 talented experts. Multiple rotations are held simultaneously so attendees have many types and styles of woodturning demonstrations available throughout each day. There is an instant gallery that you can enter with up to 3 of your own pieces. There is also the largest woodturning tradeshow anywhere, including tool and lathe manufacturers, vendors of wood and other materials, and suppliers related to woodturning.

Going to Totally Turning? Make your hotel reservation now for a room at the adjacent hotel, the Saratoga Hilton. Use the link on the following webpage to get the discounted rate—www.totallyturning.com/information.htm



CNY WOODTURNERS MEMBERSHIP

Membership in the Central New York Woodturners LLC is open to anyone interested in woodturning. The cost for a first time individual member is \$30 which includes the cost of a badge. **Renewals are \$25 per year** and due by March 1st. **Family memberships are \$35 per year** plus \$5 per badge for each family member needing a badge. Membership applications are available on the club website –



www.cnywoodturners.org. The club leadership, with contact information, is listed right as a reference. Feel free to contact any club leader to ask questions, suggest programs, or deal with issues. You need to have an active email address if you are a member as the leadership sends many member communications via email as well as this newsletter. To read the newsletter you need to have a PDF reader product such as [Adobe Acrobat Reader](#) installed on your computer. Adobe Reader is free. Due to its size, we prefer not to send newsletters by mail. However, a limited number of hard copy newsletters are sent to members without email.

The CNY Woodturners group was formed in September of 1998. It was accepted as the 121st chapter of the **American Association of Woodturners (AAW)** in November 1998. We encourage you to join AAW as it is an excellent organization with great resources as a member. Membership in AAW costs either \$43 for an online only or \$53 for a paper-based membership. Each member-

ship includes the 6 issues of the journal, *American Woodturner*, with the online membership receiving it only online. You also have access to a large collection of online resources such as the publication *AAW Fundamentals* which is published on the off months from the journal.



AAW is an international organization of over 14,000 members of varying woodturning skills. In addition to receiving current issues of the journal, *American Woodturner*, membership also provides online access to all past issues of the Journal from 1986 forward. Access to a Resource Directory is also available only to members. Members of AAW also receive savings of up to 50% on AAW merchandise, including project books, DVDs, logo apparel, and more. Members can apply for an educational opportunity grant whereby an individual can receive compensation toward woodturning education for expenses such as tuition, registration, travel, lodging, meals, etc. They can also apply for professional outreach program fellowship grants to encourage creative growth or research, or to provide inspiration for new directions in turned wood art. The AAW Forum is also available to members as are other restricted articles and resources on the [AAW website](#). Members receive a discount on registration for the annual Symposium which is in Kansas City, MO in 2017. Check out the AAW website – www.woodturner.org.

For membership applications, directions, and additional information on club events, checkout the Club website, www.cnywoodturners.org.
CNY Woodturners LLC, P O Box 2280, Liverpool, NY 13089-2280

CNY WOODTURNERS LEADERSHIP

OFFICERS

- Doug North, *President*
(315) 673-3611
president@cnywoodturners.org
- Chad Dawson, *Vice-President*
(315) 480-4319
vpresident@cnywoodturners.org
- Barbara Raymond-LaPrease, *Secretary*
(315) 638-1217
secretary@cnywoodturners.org
- Mark Baumes, *Treasurer*
(315) 730-9027
treasurer@cnywoodturners.org

MEMBERS-AT-LARGE

- Rod Castle (315) 638-2659
roderick.castle@verizon.net
- Bob Ireland (315) 402-2813
rireland@twcny.rr.com
- Mike Malecki (315) 569-0099
msquared16@aol.com
- John Mielcarski (315) 476-6571
slickrover@aol.com
- Larry Prunotto (315) 652-3605
larry0128@verizon.net
- Ed Siegel (845) 554-2473
egseigel@aol.com
- Mel Taber (315) 487-7855
mtaber3@gmail.com

COMMITTEES

- DEMONSTRATIONS**
- Heather Muckley (585) 739-7108
hmuckley@yahoo.com
- Robert Love (315) 297-4224
rclove@sbcglobal.net
- Greg Potter (315) 529-1536
gjpotter@twcny.rr.com
- EQUIPMENT**
- Charlie LaPrease (315) 720-7151
8acreswood@gmail.com

- NEWSLETTER**
- Barbara Raymond-LaPrease
barbchas@twcny.rr.com

- NEW YORK STATE FAIR**
- Ed Siegel

- PHOTOGRAPHY**
- Heather Muckley

- VENDOR RELATIONS**
- Larry Prunotto

- VIDEO LIBRARY**
- Phyllis Radford (315) 452-1386
pkradford@hotmail.com

- WEBMASTER**
- Chad Dawson

Crossword Puzzle Answers

Across: (3) Uphill; (4) Warning; (5) Lancaster; (7) Sandpaper; (10) HusbandAdjustmentTool; (13) DangerZone; (14) TotallyTurning

Down: (1) AllergyProducing; (2) Cylinder; (6) AshleyHarwood; (8) Bloodwood; (9) AAW; (11) FaceShield; (12) Cracks

OUR 2017 MEETING SCHEDULE

Date	Topic	Demonstrator	Workshop Date/Location
January 10 th	Basic Bowl Turning	Charlie LaPrease	January 21 st / Eight Acres
February 14 th	Rolling Pins	Bob Ireland	February 25 th / Eight Acres
March 14 th	Live Edge Turnings	Terry Vermilyea	March 18 th / Eight Acres
April 12 th	Miniature Fruit Bowl	Dawn Petrie-George	April 15 th / Eight Acres
May 10 th	Lighthouse Ornament	Don Lum	May 13 th / Eight Acres
June 14 th	Turning a Lamp Base	Greg Potter	June 17 th / Eight Acres
July 12 th	Jigless Hollowing!	Dick Parker	July 15 th / Eight Acres
August 9 th	Marbling	Barbara Raymond-LaPrease	August 12 th / Eight Acres
August 25 th to September 4 th	Demonstrate at the New York State Fair	All Members!	Each day 10am to 8pm in the Witter Agricultural Museum!
September 13 th	Natural Edged Bowl	Mike Gridley	September 16 th / Eight Acres
October 11 th	Skew It!	Dick Hoblitzell	October 14 th / Eight Acres
November 15 th	TBD	Ed Siegel	November 18 th / Eight Acres
December 13 th	Holiday Gathering with Your Woodturning Friends!		None—Enjoy Your Holidays!

CLASSIFIEDS

Classifieds are welcome with the caveat that people notify the editor when entries are sold.



FOR SALE: Delta 46-541s 12 " Gap Bed Variable Speed Lathe on original metal stand. 38" between drive arbor & tailstock; ½ HP; multiple speeds with variable speed pulleys on headstock & additional on transfer shaft. 1" tool post; 1x8 tpi thread. \$300. Contact Charlie LaPrease, 720-7151 or 8acreswood@gmail.com

FOR SALE: Hawk Model 226VS 26" Scroll Saw with Foot Switch and Magnifying Light. \$1200.00 new and used very little. Make me an offer. Contact Mel Taber, 487-7855 or mtaber3@verizon.net

FOR SALE: Large selection of wood including >60bd feet of mahogany plus small selection of maple walnut, cherry & poplar. Prices negotiable. Contact Dave Mirizio at 263-2341.

FOR SALE: Craftsman 8 inch Bench Grinder with ½ arbor, 1 hp motor. \$70. Contact Bob Silberman @ (607) 257-0939 or rsilberman@twcny.rr.com.

FOR SALE: Jet 1014 Mini Lathe & stand. Barely used. \$425. Contact Bob Ireland at rireland@twcny.rr.com if interested or if you have questions.

FOR SALE: Jet Model 1442 Lathe. Lightly used over 10 years. \$1000 or best offer. Contact Kris Dulmer at (315) 559-7360 or kdulmer@hotmail.com

FOR SALE: Earlex 5500 HVLP Spray Unit includes extra needle, cleaning kit, small tool box for parts, 1 gal & 1 quart Target Water Base Lacquer, 1 gal Target Water Base Sanding Sealer. **NOW \$240.** All new & purchased for >\$400. Contact Bob Henry at (585) 323-1166 or bbhny@yahoo.com

FOR SALE: Gemini Wood Carver/Duplicator

No Reasonable Offer Refused vvv The machine is complete and has the decoy/gunstock option included. Ready to put on your bench and have running in an hour or less. I will assist you in set up if you want. Made in USA in Elbridge, NY. Contact Mel Taber, (315) 487-7855 or mtaber3@verizon.net

FOR SALE: Used bench vises. Good quality, commercial grade. Price \$50 to \$75 each. For more info, email Bud Millis at emillis@twcny.rr.com or call (315) 297-7525.

FOR SALE: LUMBER – Kiln & Air Dried Hardwoods (PA cherry, chestnut, maple, white oak, butternut, etc.) and some softwoods available. Also Black Walnut and English Walnut slabs available. For more details, email Bud Millis at emillis@twcny.rr.com or call (315) 297-7525.

FOR SALE: Craftsman COPY CRAFTER. \$150. Contact Fred Brockway at (315) 521-5873.

Memphis Hardwood Lumber – Situated on the bank of the Old Erie Canal, over 40 species of domestic and exotic hardwoods – including turning stock. Only local supplier for Baltic birch plywood in different sizes – 1/8", ¼", ½", etc. For more information, see website www.memphishardwoodlumber.com. Custom engraving also available. Located at **6535 Church St, Memphis, NY**. Open M-F 8am–4pm. Call for Saturday appointments. (315) 689-3949