

Gnome

Materials:

2" x 2" x 3" walnut (hat)
2" x 2" x 2 1/4" maple (body)
8" 3/8" walnut dowel (nose)
Mark the center of both ends on all wood pieces
Glue, quick dry, tacky glue
Small eye screw³
Beard (2" x 2" fake fur)

Tools:

Chuck with pin jaws
Cone Center
Drill chuck in #2 morse taper

Spindle roughing gouge

Detail gouge or skew

Parting tool

Calipers

Exacto knife

Hand Drill or Drill Press

#22 drill

1/2" drill

3/4" drill

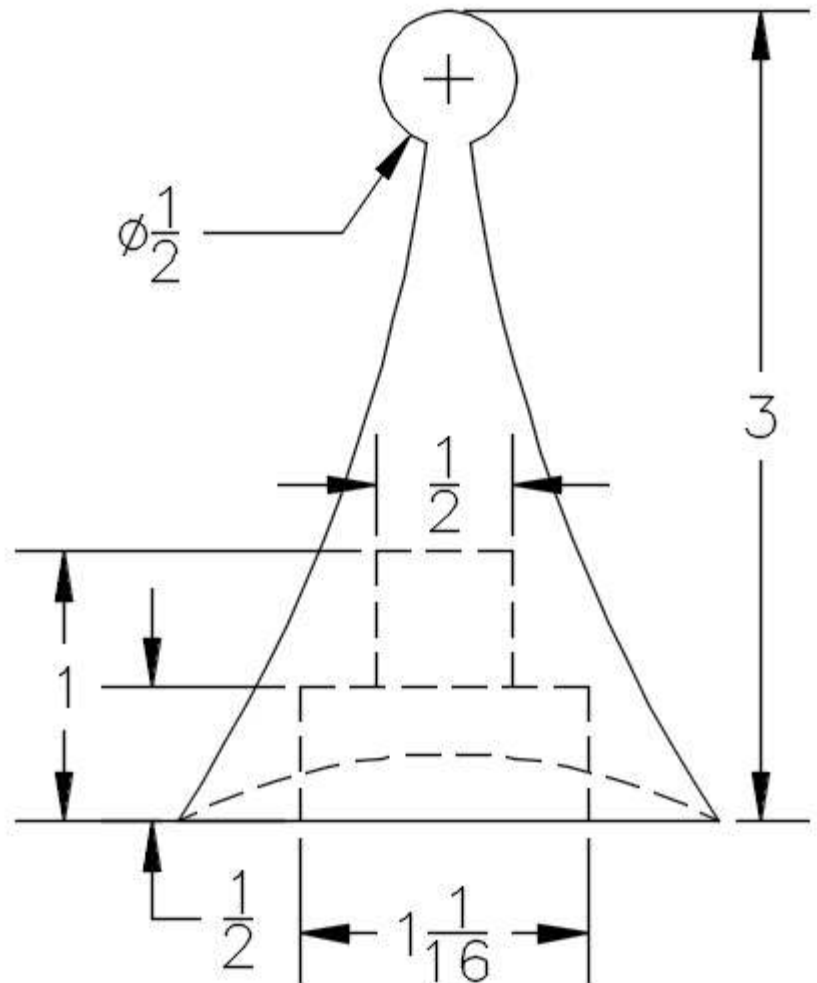
1 1/16" drill (hat mortise)

4 mm open end wrench (ball tenon)

1 1/16" open end wrench (body tenon)

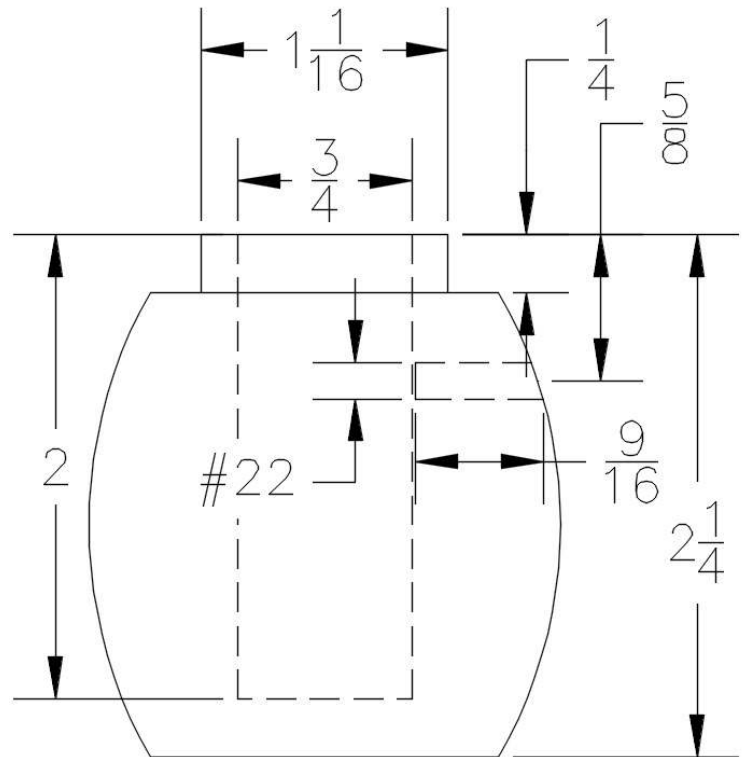
Turning the Hat²

1. Drill a 1 1/16" hole, about 1/2" deep in center of one end of the walnut block.
2. Mount the wood using the expansion method on your chuck, use the cone center to help stabilize. Round off the block. Cut a 1" tenon on the tail stock end. Reverse the block.
3. Square up the live-center end, create a slight taper toward the live-center. This is the underside of the hat.
4. Drill the 1/2" hole, to lighten the hat, if you want.
5. Reverse block again.
6. Turn the tail stock end down to about the diameter as your ball, about 1/2". Turn the ball on the top of the hat. Do not worry about the dimple the cone center makes, this will be the pilot hole for the eye ring³
7. Shape the hat, sand and finish.



Turning the Body

1. Drill a $\frac{3}{4}$ " hole, 2" deep in the maple block.
2. Mount the maple between centers putting cone center into the $\frac{3}{4}$ " hole. round the block and cut a tenon, about $\frac{1}{4}$ " long, using the $1\frac{1}{16}$ " wrench¹ as the caliper.
3. Shape the body, sand and finish.



Creating the ball for the nose

1. Put the $\frac{3}{8}$ " dowel in the chuck, exposing about 2 inches and turn a ball on the end and using the 4mm. wrench¹ as a caliper create a $\frac{1}{2}$ " long tenon.
2. Sand and finish.

Assembling the Gnome

Using the #22 drill put a hole⁴ about $\frac{1}{2}$ " deep $\frac{5}{8}$ " inch from the top of the body. This is the hole for the nose.

Center the beard over the nose hole and aligned with the top of the body. Feel for the nose hole and put a hole thru the beard there using the Exacto knife.

Ensure the nose hole is large enough for slight beard adjustment, put the beard in place and press the nose in place. Apply a small amount of glue to the top of beard, press on to the body.

Glue the hat onto the body.

Screw the eye hook on.

Notes:

- 1) A wrench needs to be slightly larger than the bolt head it is for, so using one to size a tenon makes for a nice fit
- 2) The club offers many excellent spindle turning mentors
- 3) Jewelry section of a craft store like Michaels or Hobby Lobby
- 4) This hole can be drill, using a drill press, while the block is still square